



**Appendix G:
Wilsonville Public Art**

TABLE OF CONTENTS

- Inventory of Wilsonville Public Art 2020 2
- Wilsonville Art Tour, Sept. 2020..... 4
- Guide to Public Sculpture in Wilsonville, Wilsonville Citizens
for Public Art, 2008/2009 98

Inventory of Wilsonville Public Art 2020

- 1 -

Location	Type	Description	Title	Artist	Owner
Argyle Square	Sculpture	Bronze sculpture	Whirlwind	Martin Eichinger	Private
Argyle Square	Sculpture	Burnished stainless steel	Big John 2002	Bruce West	Private
Boeckman Road	Sculpture	Steel and bronze sculpture	Stylized horsetails	Jason Johnson, Innovative Metal Design	Public
Boones Ferry Road	Sculpture	Metal family sculpture	Family	Wesley Bullock	Private
City Hall		Concrete pad, metal mounting plate			Public
Clackamas Community College campus	Sculpture	Metal sculpture	The Nest	Jesse Swickard	Public
Creekside Woods Apartments	Sculpture	Metal sculpture	Cycles of Salmon	Ben Dye	Private
Crest Farm	Sculpture	Kinetic sculpture, multiple media	Wind Bouquet	Jesse Swickard, Christopher Shotola-Hardt, Student	Private
Graham Oaks Nature Park	Sculpture	Basalt acorn sculpture	Acorn	Mauricio Saldana	Public
I-5 and Wilsonville Road underpass	Mural	Tile mural	Beauty and the Bridge	Jerry Werner, Christopher Shotola-Hardt, 1000 Wilsonville school students	Public
Library	Sculpture	Granite marker, engraving	May Peace Prevail on Earth		Public
Library	Sculpture	Metal sculpture	Modern Flight	Jesse Swickard	Public
Library	Sculpture	Steel and glass butterfly sculpture	Flight of the Moon	Laurel Marie Hagner, Jesse Swickard	Public
Library	Sculpture	Steel disc sculpture	Re-invention	Ivan McLean	Public
Public Works		Concrete pad, metal mounting plate			Public
Public Works Building		Concrete pad, metal mounting plate			Public
SMART Admin Office	Sculpture	Metal sculpture	El Viento	Jesse Swickard, Christopher Shotola-Hardt	Public
Town Center Park		Empty concrete pad			Public
Town Center Park		Empty concrete, metal mounting plate			Public
Town Center Park	Memorial	Granite wall, engraving	Oregon Korean War Memorial	Murase and Associates	Public

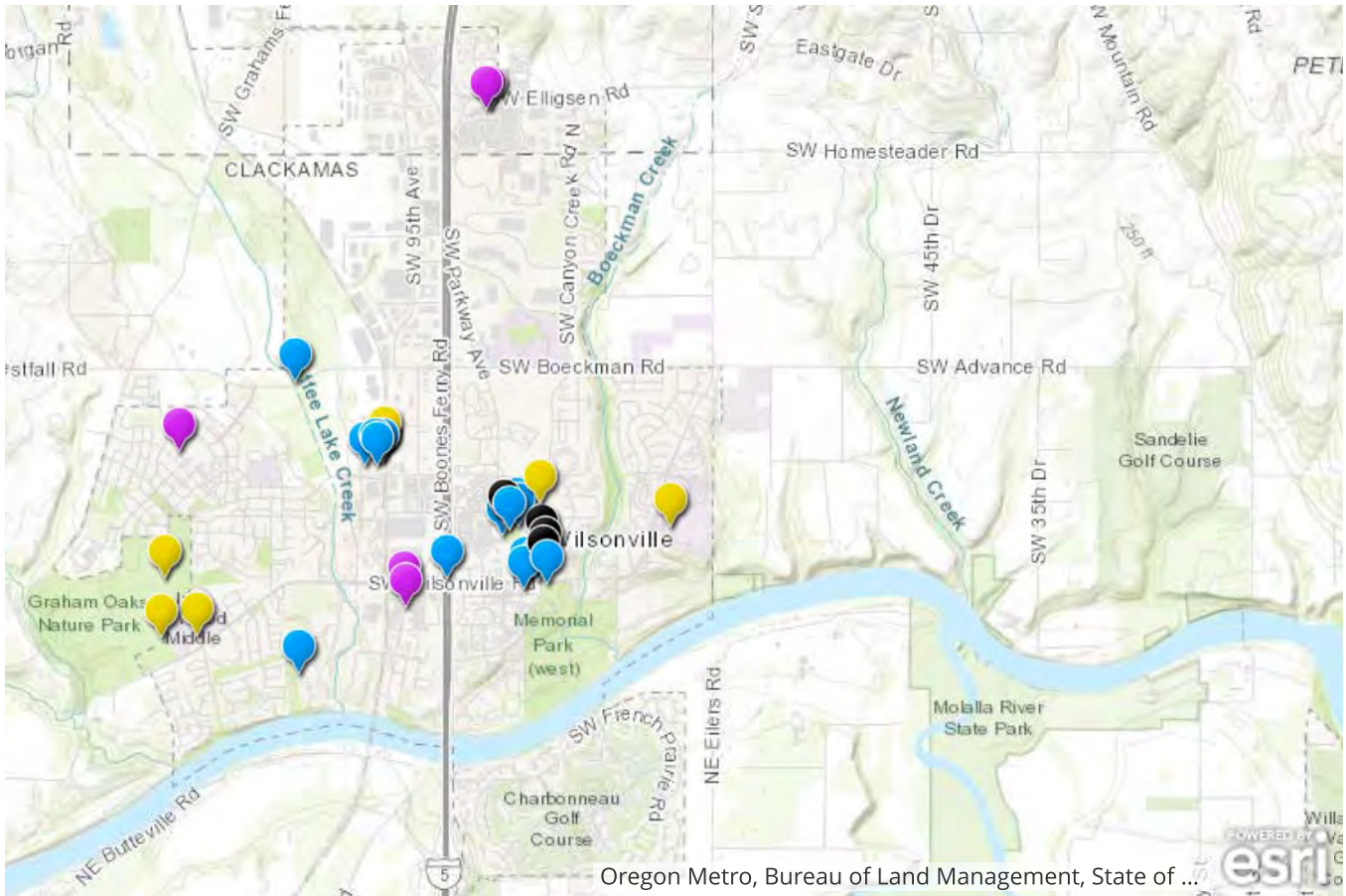
Inventory of Wilsonville Public Art 2020

– 2 –

Location	Type	Description	Title	Artist	Owner
Town Center Park	Sculpture	Bronze statue of General Douglas MacArthur	General Douglas MacArthur	Nick Christensen	Public
Town Center Park	Sculpture	Japanese Sister City stone, brass plaque	Friendship		Public
Town Center Park	Sculpture	Metal horse sculpture	Apache	Jesse Swickard	Public
Town Center Park	Sculpture	Steel powder coat sculpture	Guardian	Jesse Swickard	Public
Villebois Piazza	Sculpture	Bronze cast mask	Rhino mask		Private
Villebois Piazza	Sculpture	Bronze cast mask	Monkey mask		Private
Villebois Piazza	Sculpture	Bronze cast mask	Bear mask		Private
Villebois Piazza	Sculpture	Bronze cast mask	Wolf mask		Private
Villebois Piazza	Sculpture	Bronze cast mask	Giraffe mask		Private
Villebois Piazza	Sculpture	Bronze cast mask	Tiger mask		Private
Villebois Piazza	Sculpture	Bronze cast mask	Owl mask		Private
Villebois Piazza	Sculpture	Bronze cast mask	Elephant mask		Private
Villebois Piazza	Sculpture	Bronze cast mask	Lion mask		Private
Villebois Piazza	Sculpture	Bronze cast mask	Zebra mask		Private
Villebois Skate Park			Mt. Hood Marker		Private
Wilsonville High School	Sculpture	Metal sculpture	Life Tree	Jesse Swickard, Laurel Marie Hagner	Public
Wilsonville Transit Center	Sculpture	Metal human sculpture	Let's Dance	Jim M. Johnson	Public
Wilsonville Transit Center	Sculpture	Metal interactive sculpture	The Wilsonville Interactivator	Frank Boyden, Brad Rude	Public
Wilsonville Transit Center	Sculpture	Metal, glass clock tower	Clock Tower	Jerry Werner	Public
Wilsonville Transit Center	Sculpture	Two metal accent door panels		Jerry Werner	Public
Wilsonville Transit Center	Structure	Metal shelter, fused glass green tree design		Laurel Marie Hagner	Public
Wilsonville Transit Center	Structure	Metal shelter, fused glass red tree design		Laurel Marie Hagner	Public

Wilsonville Art Tour

This story was made with *Esri's Story Map Journal*.
Read the interactive version on the web at <https://arcg.is/0LvODq>.



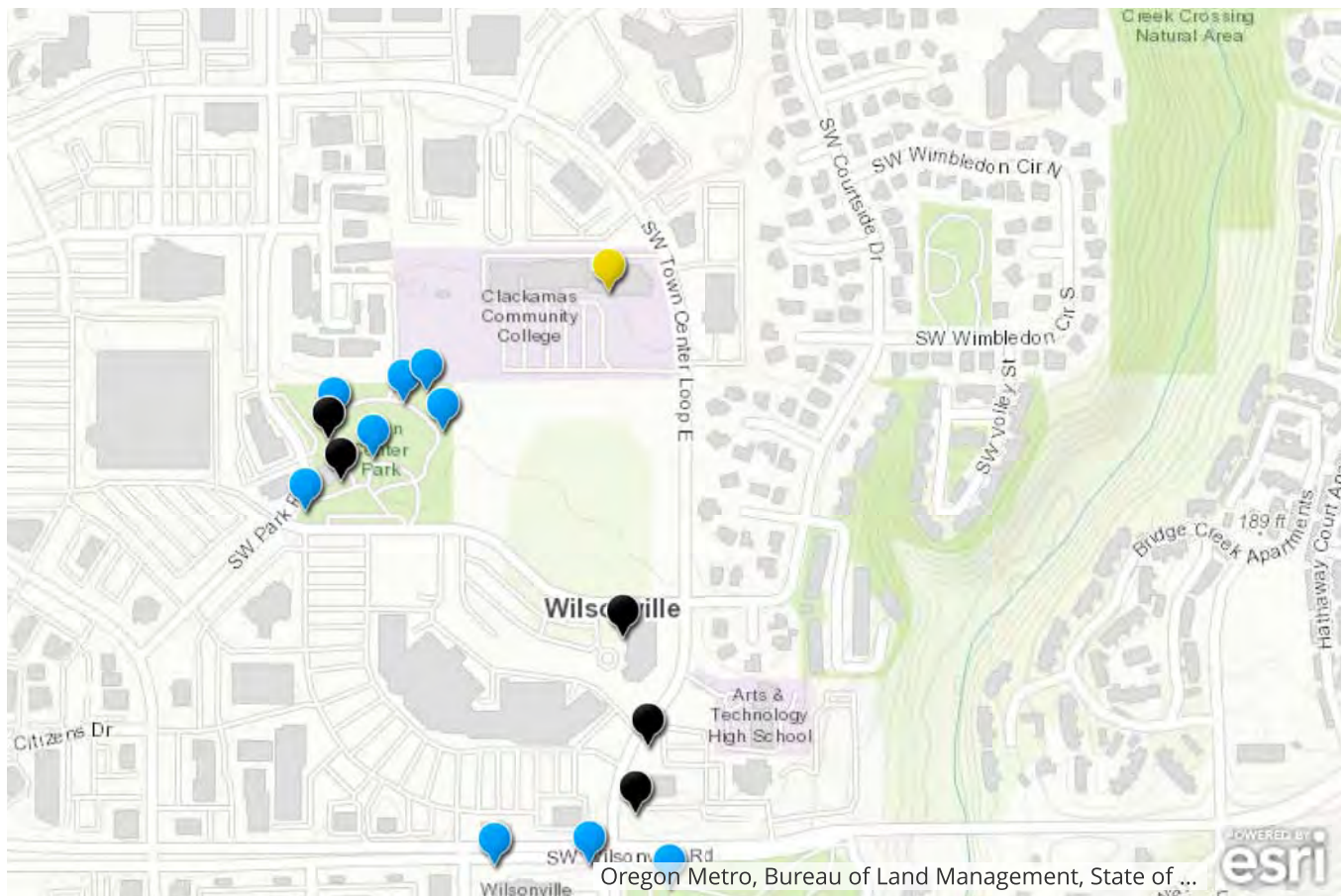
Artwork

-  City Owned
-  Publicly Owned
-  Privately Owned
-  Available Spaces

Welcome to the City of Wilsonville's virtual art tour. We'll visit Town Center Park, the Wilsonville Public Library, Wilsonville Transit Center and other sites within Wilsonville, showcasing City-owned art and other publicly-accessible installations. Enjoy!



Town Center Park



Artwork

-  City Owned
-  Publicly Owned
-  Privately Owned
-  Available Spaces

29600 Park Place Court

Our first stop is Town Center Park, a popular five-acre urban park located in the heart of Wilsonville's commercial district that includes several can't-miss pieces.



Apache



It's hard to miss Apache, the life-sized sculpture who greets visitors to Town Center Park and the Parks & Recreation Administration Building (at the intersection of SW Courtside Drive and Park Place).



Located at the intersection of SW Courtside Drive and Park Place, this life-sized sculpture greets everyone visiting Town Center.

Town Center Park Water Feature



Town Center Park is one of three local parks designed by Robert Murase (Murase and Associates); the park's signature element is its beautiful and distinctive water feature.





Friendship



Visitors heading north on Park Place will find a sculpted stone with an imbedded plaque.



The stone and the cherry trees planted nearby were placed in October 1998 to commemorate the 10-year anniversary of Sister City relationship between Wilsonville and Kitakata, Japan.

Guardian



Continuing on the path, our next piece towers among the trees.





Oregon Korean War Memorial



Within steps of Guardian stands Oregon’s lasting monument to the sacrifice of Korean civilians and the 60,000 Oregonians who fought in the conflict from 1950-53.



The granite wall, 109 feet in length, includes the names of 298 Oregonians who died or were listed as missing from the war





Oregon Korean War Memorial



Completed in 2000, the memorial hosts annual remembrance ceremonies on Memorial Day and Veterans Day in conjunction with the Oregon chapter of the Korean War Veterans Association.





Flags of the United States, South Korea, United Nations, POW/MIA and the State of Oregon are flown from 30' poles



General Douglas MacArthur



Our final Town Center Park stop is the bronze statue honoring General Douglas MacArthur, commissioned by the Korean War Memorial Foundation of Oregon.

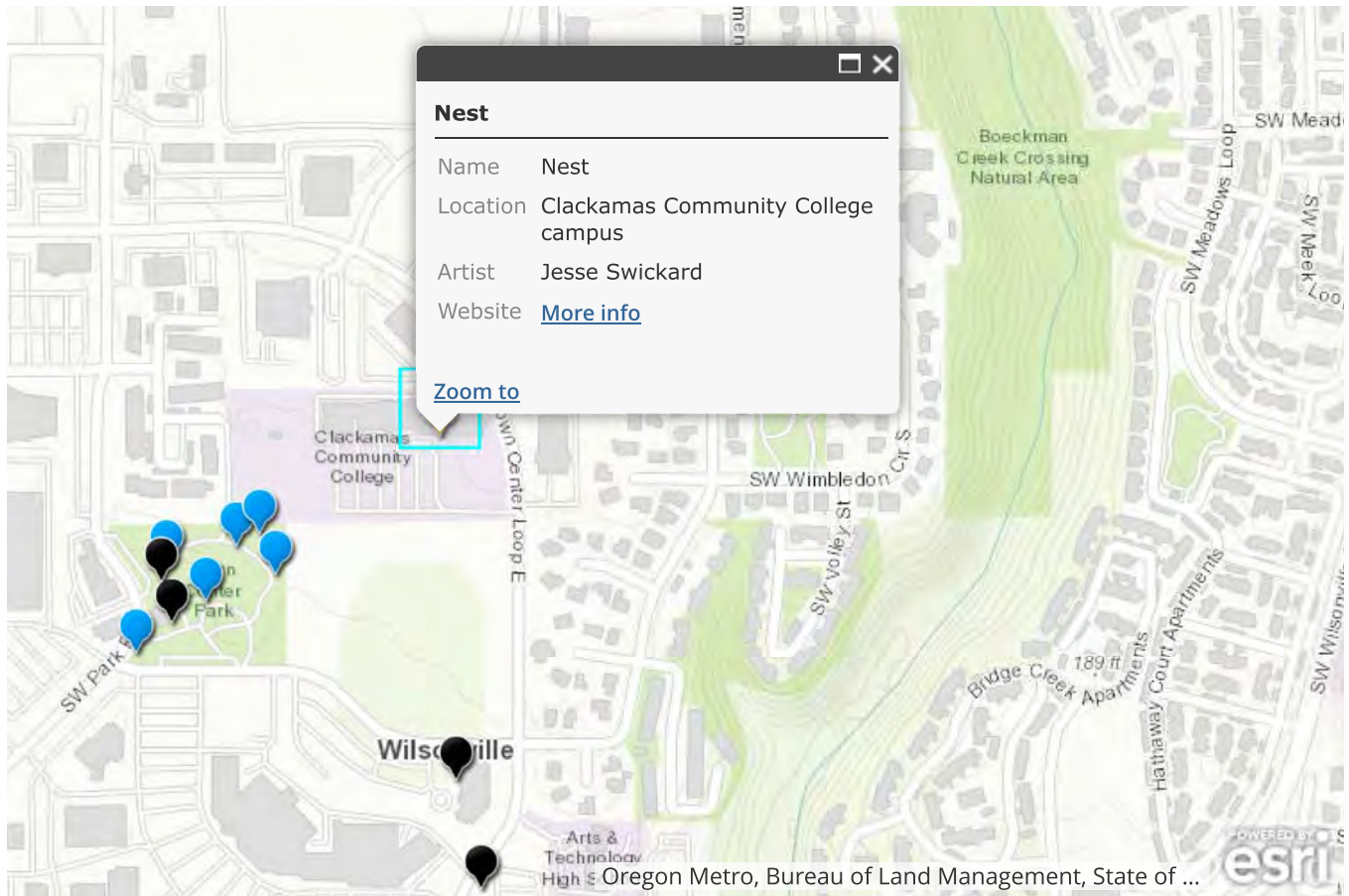




Bronze statue, sculpted stone
Artist: Nick Christensen

Installed in 2017, the statue honors the American five-star general who served as Commander in Chief of United Nations Forces in Korea, July 8, 1950-April 11, 1951.

Nest



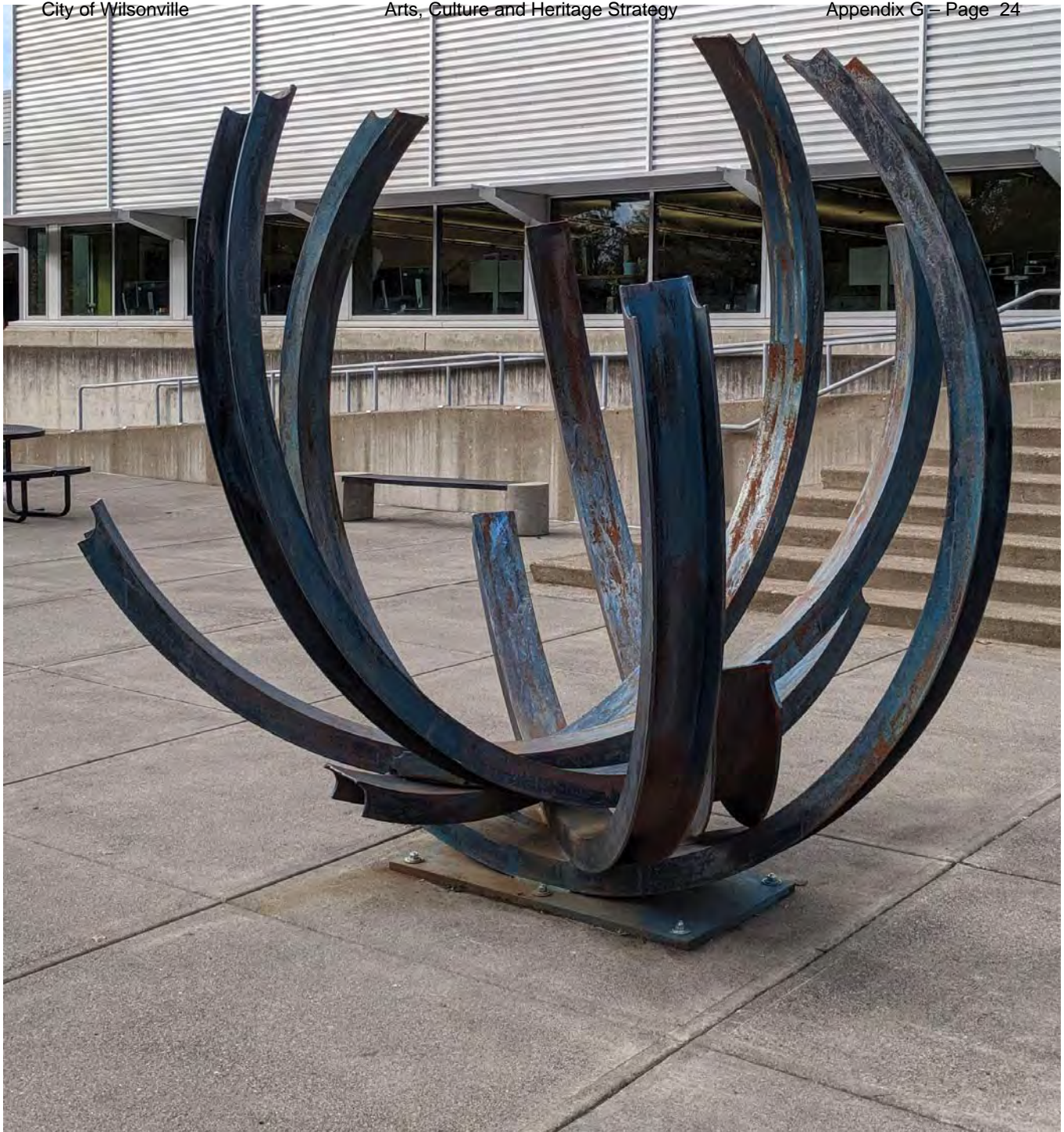
Artwork

-  City Owned
-  Publicly Owned
-  Privately Owned
-  Available Spaces

29363 Town Center Loop E

This sculpture is located at the Wilsonville campus of Clackamas Community College





City Hall



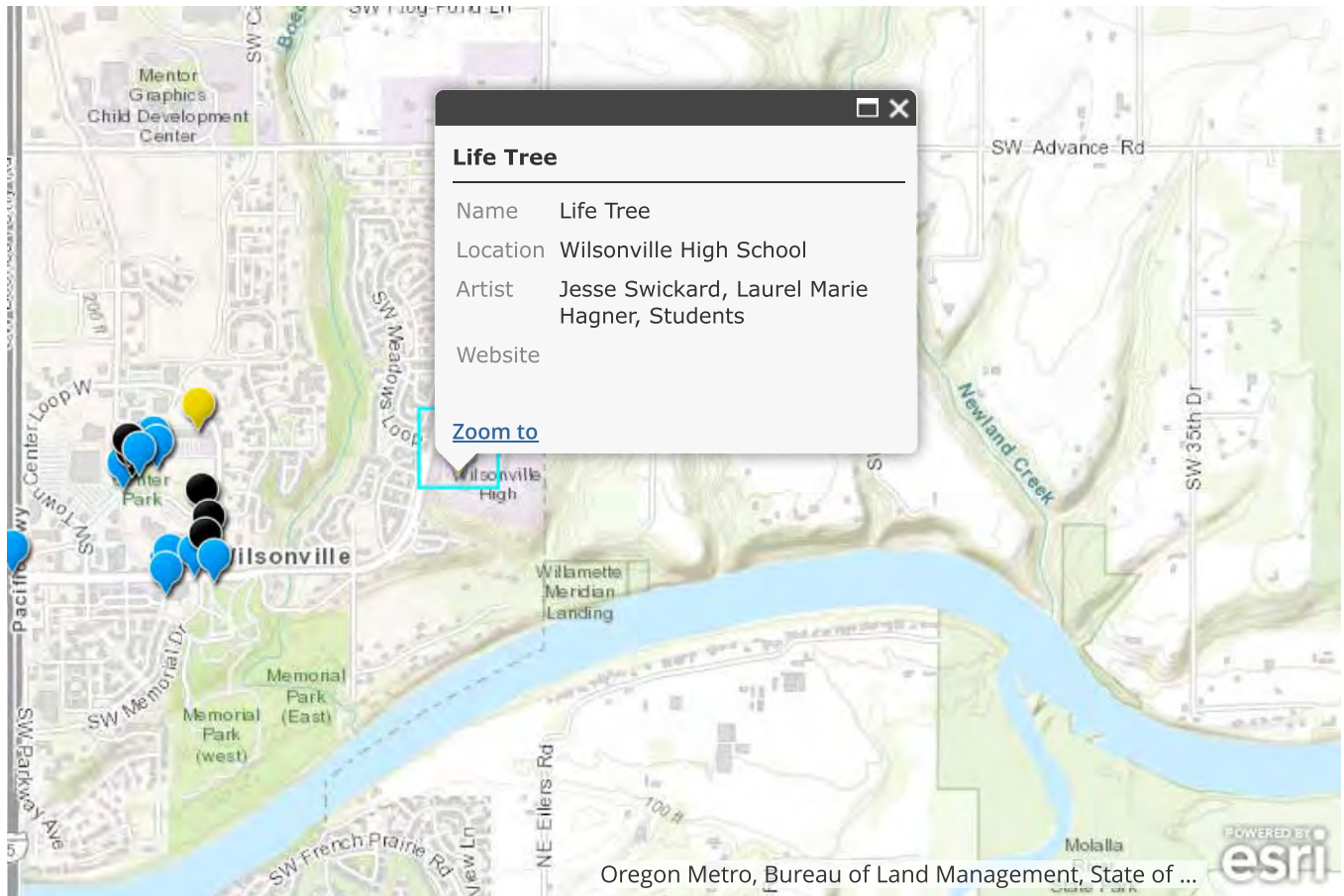
29799 Town Center Loop E

Wilsonville City Hall has a first-floor gallery available to view during business hours. Additionally, within Council Chambers, you will find a small tile mural that commemorates the completion of the Beauty and the Bridge project.



Learn more about the project by visiting the [Beauty and the Bridge](https://www.ci.wilsonville.or.us/residents/page/i-5-artwork-beauty-bridge) (link: <https://www.ci.wilsonville.or.us/residents/page/i-5-artwork-beauty-bridge>) website.

Life Tree

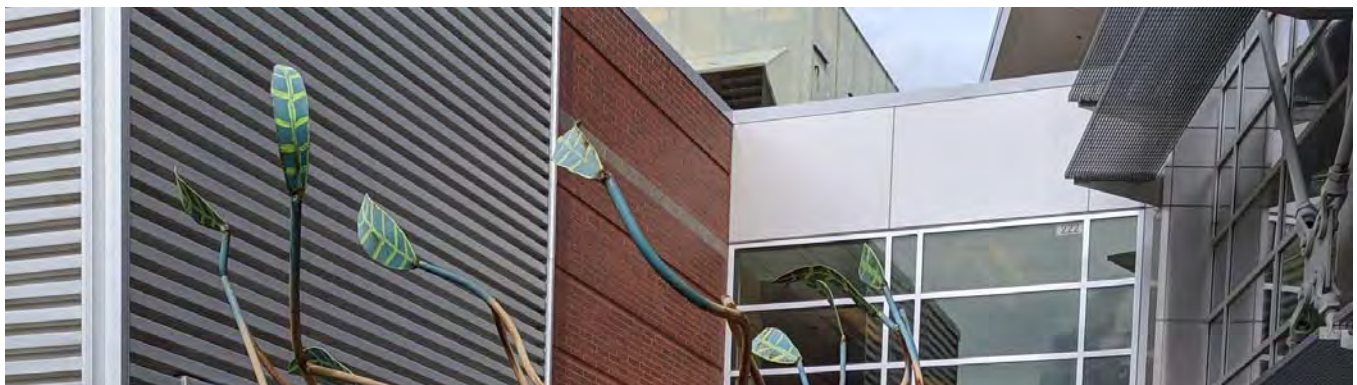


Artwork

-  City Owned
-  Publicly Owned
-  Privately Owned
-  Available Spaces

6800 Wilsonville Road

At the south end of Wilsonville High School, you'll find a truly one-of-a-kind piece.





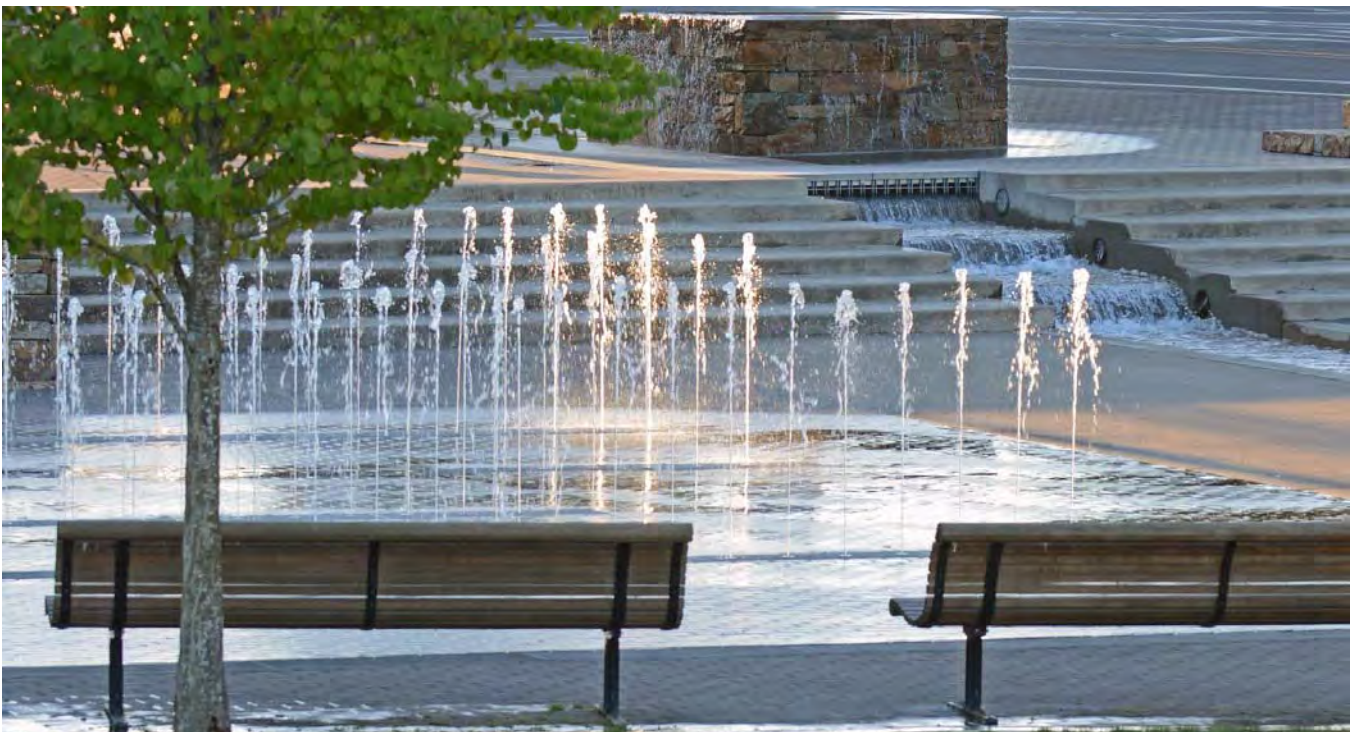


Murase Plaza



8300 Memorial Drive

Wilsonville's largest park, Memorial Park, is another distinctive outdoor space designed by Robert Murase and Associates.

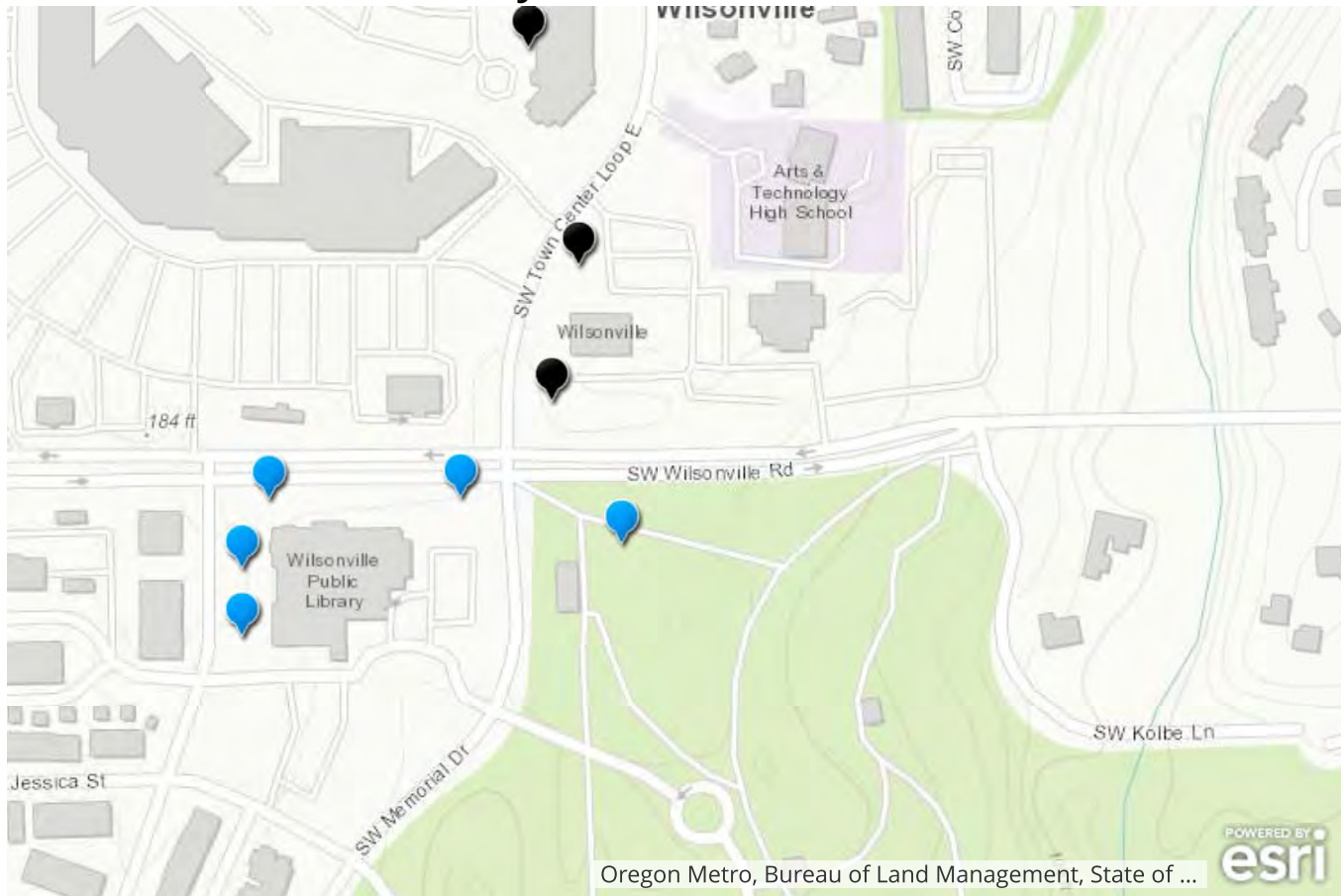




Murase Plaza was conceived by Murase as a public gathering space, and includes an interactive water feature, restrooms, walking paths and seating areas



Wilsonville Public Library



Artwork

-  City Owned
-  Publicly Owned
-  Privately Owned
-  Available Spaces

8200 Wilsonville Road

Across the street from Murase Plaza, the Wilsonville Library is the next stop on the tour



Re-invention



This steel sculpture is visible from Wilsonville Road, near the Memorial Drive Intersection.

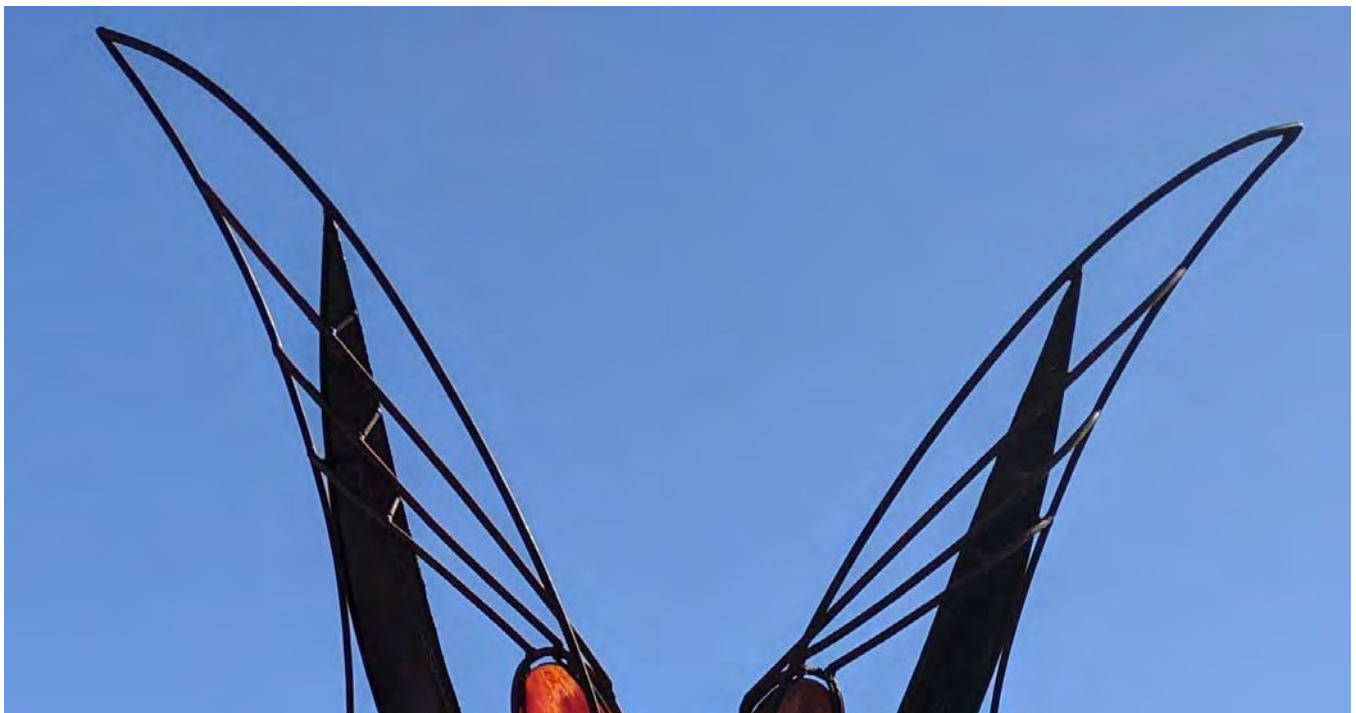




Flight of the Moon



Just a little further west on Wilsonville Road, at Rebekah Street, is our next piece.





Modern Flight



Heading south on Rebekah Street, you'll find our next sculpture, which was installed in 2011 by the Arts and Culture Alliance of Wilsonville.





Peace Pole



Our final *outdoor* Library stop is located just a bit further south on Rebekah Street.





The pole, donated by Wilsonville Rotary, includes the words “May Peace Prevail on Earth” in several languages. It’s one of more than 200,000 peace poles that exist in 200+ countries worldwide

Wilsonville, Circa 1910

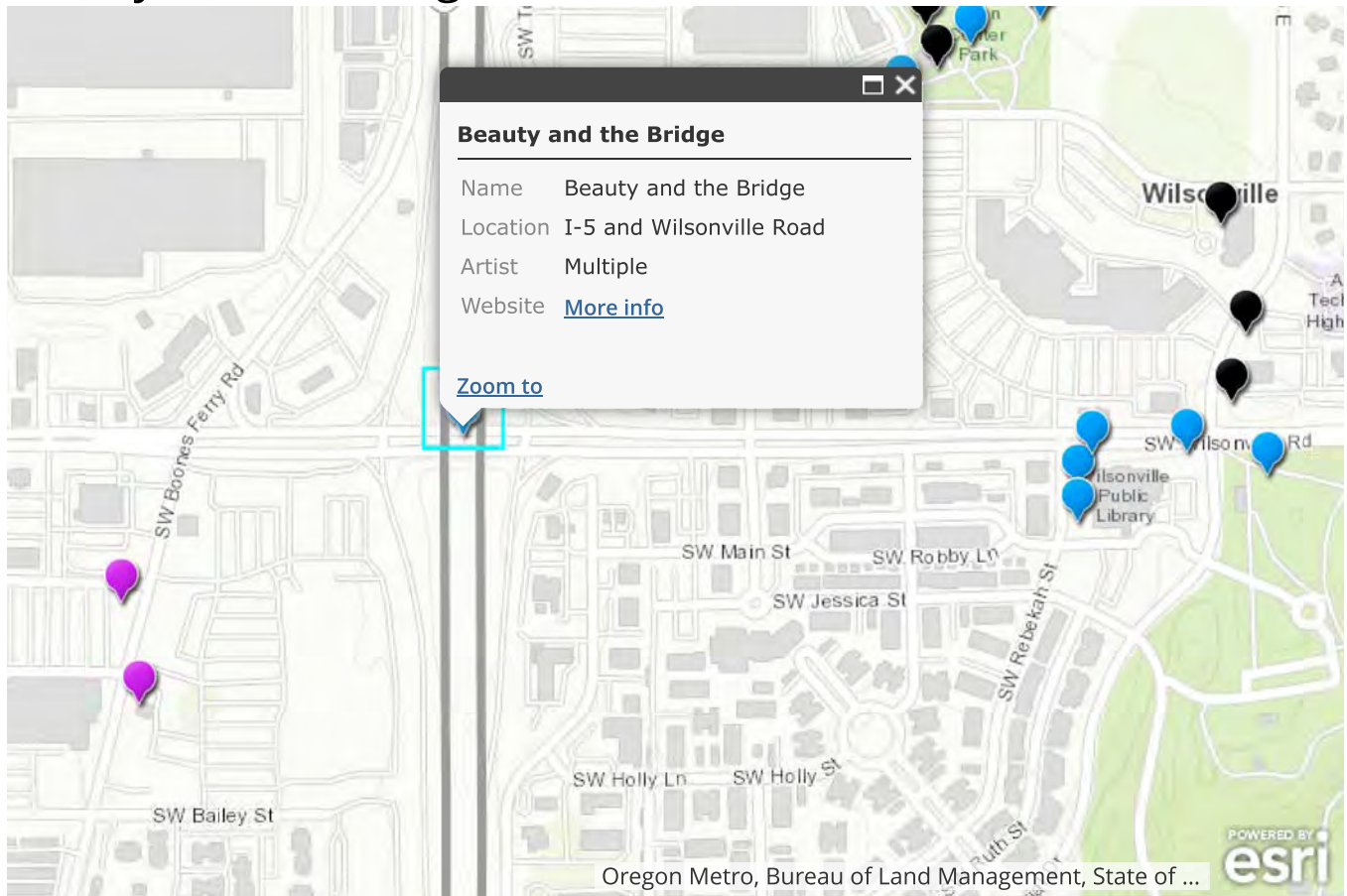


Head inside the Library for a look at “Wilsonville, Circa 1910” the signature item in the library’s art collection. The piece is a fine example of intarsia, a woodworking method that uses varied shapes, sizes and colors to create a mosaic with the illusion of depth.



Additionally, the library has monthly exhibits on the Art Gallery wall and displays about 70 additional pieces. Visit during business hours or click [here](https://www.wilsonvillelibrary.org/lib/page/art-collection) (link: <https://www.wilsonvillelibrary.org/lib/page/art-collection>) to learn more about the Library's collection.

Beauty and the Bridge



Artwork

-  City Owned
-  Publicly Owned
-  Privately Owned
-  Available Spaces

Wilsonville Road and I-5 Interchange Underpass

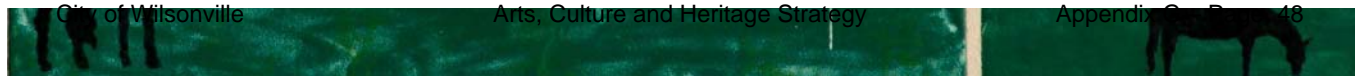
Moving west on Wilsonville Road, the next installation is best appreciated on foot or by bike.



The I-5 underpass on Wilsonville Road was transformed in 2012 with art created by Wilsonville students. The project, in conjunction with road improvements, was designed to make walking/cycling more inviting.

Beauty and the Bridge

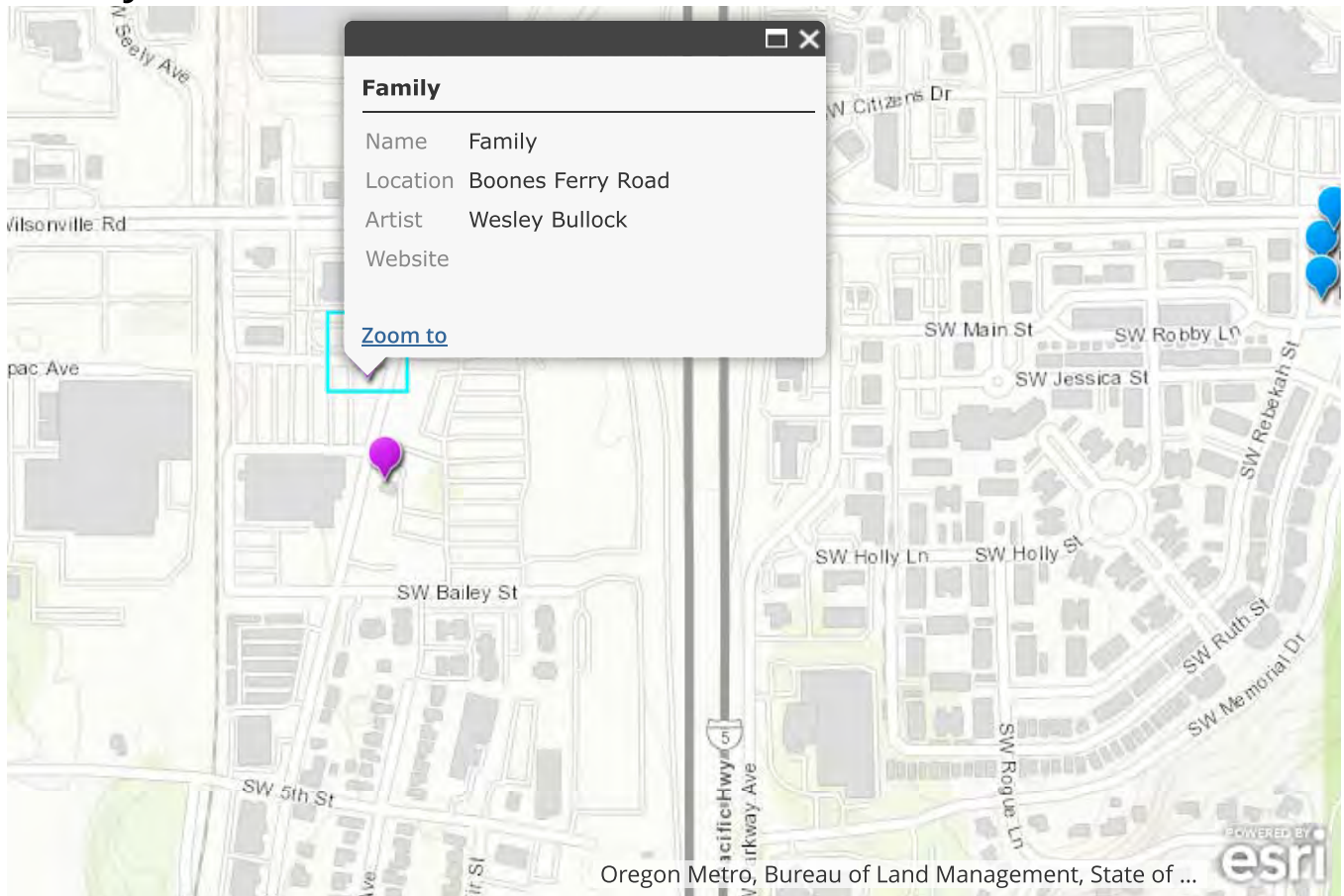




Learn more about the project and get an up-close look on the Beauty and the Bridge ([link: https://www.ci.wilsonville.or.us/residents/page/i-5-artwork-beauty-bridge](https://www.ci.wilsonville.or.us/residents/page/i-5-artwork-beauty-bridge))_Website.



Family



Artwork

-  City Owned
-  Publicly Owned
-  Privately Owned
-  Available Spaces

At the Lowrie Shopping Center, Boones Ferry Road

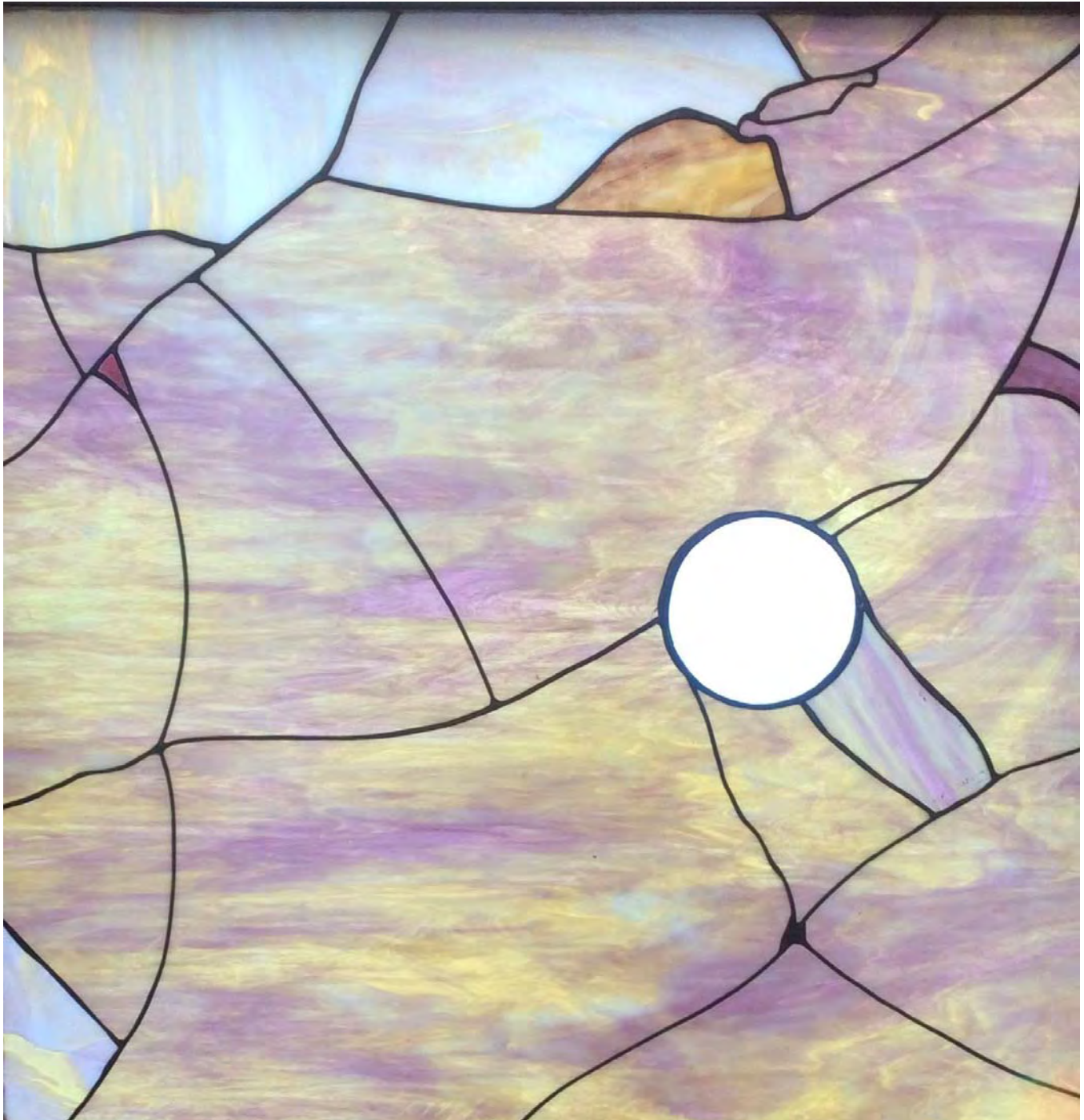




Welded fabricated steel sculpture
Artist: Wesley Bullock

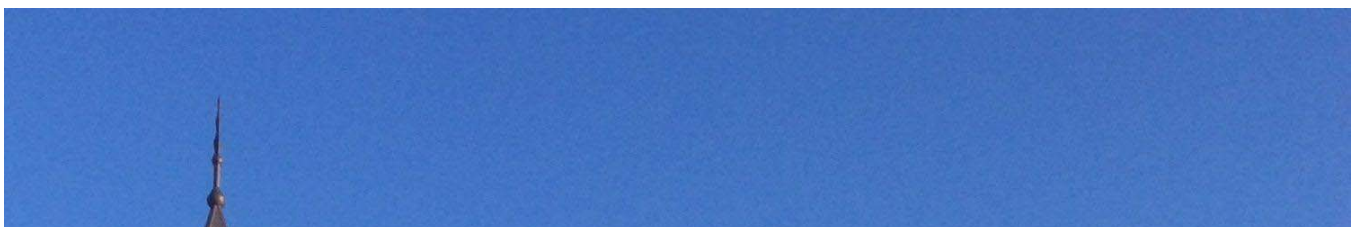
The sculpture is privately owned by the Killian and Lowrie families, but is on permanent display at the Boones Ferry Road SMART stop.

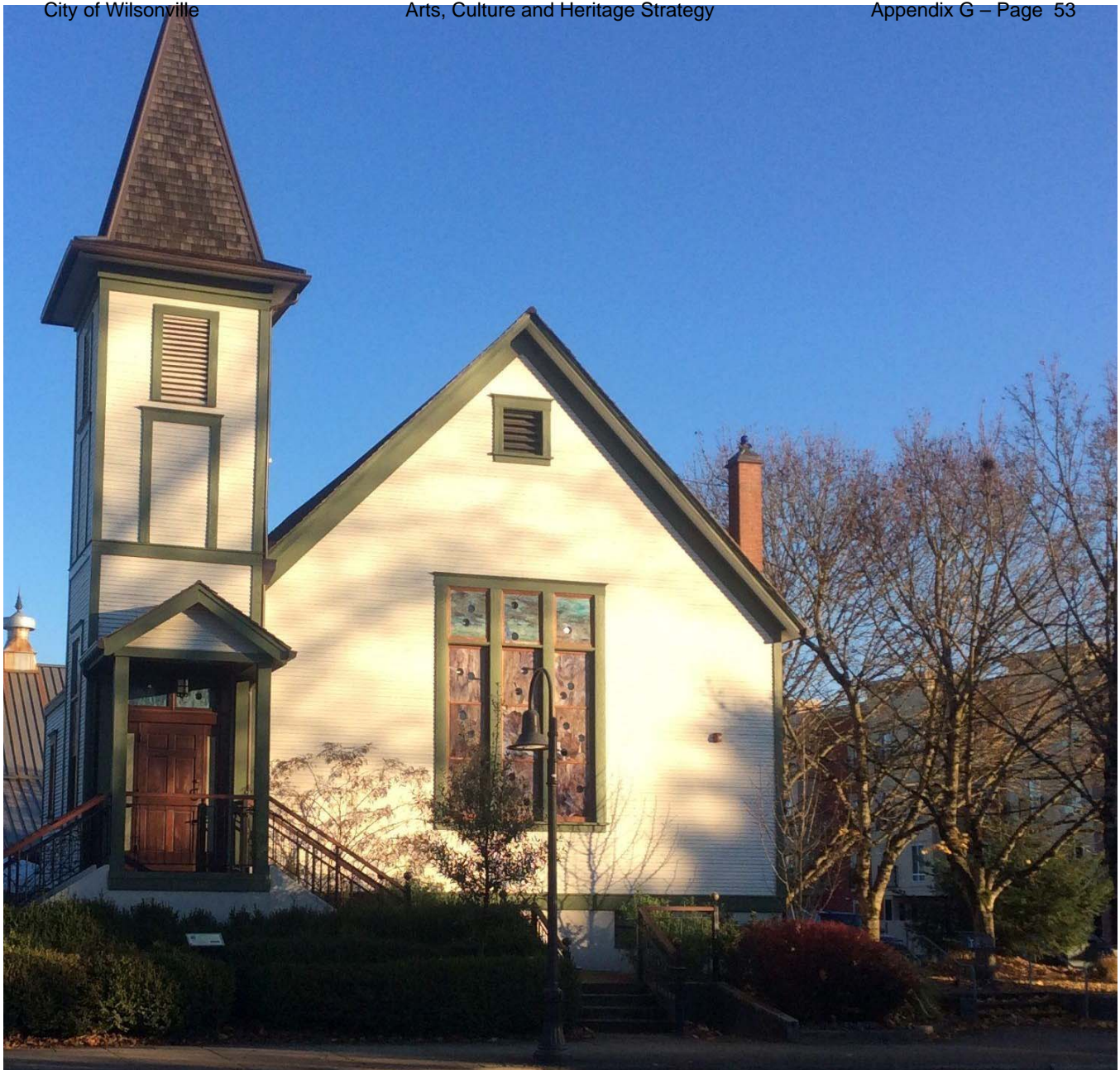
McMenamin's Wilsonville Old Church



30340 Boones Ferry Road

Across Boones Ferry Road, you'll find the Old Church, which has been converted to a restaurant and event venue.

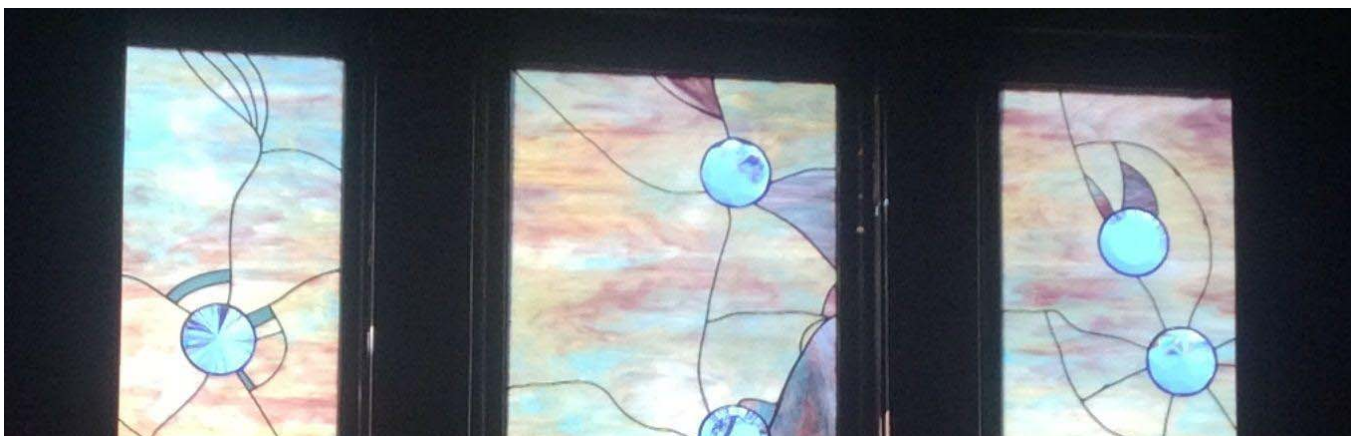




Stained glass windows

Artist: David Schlicker, Dan Woodard

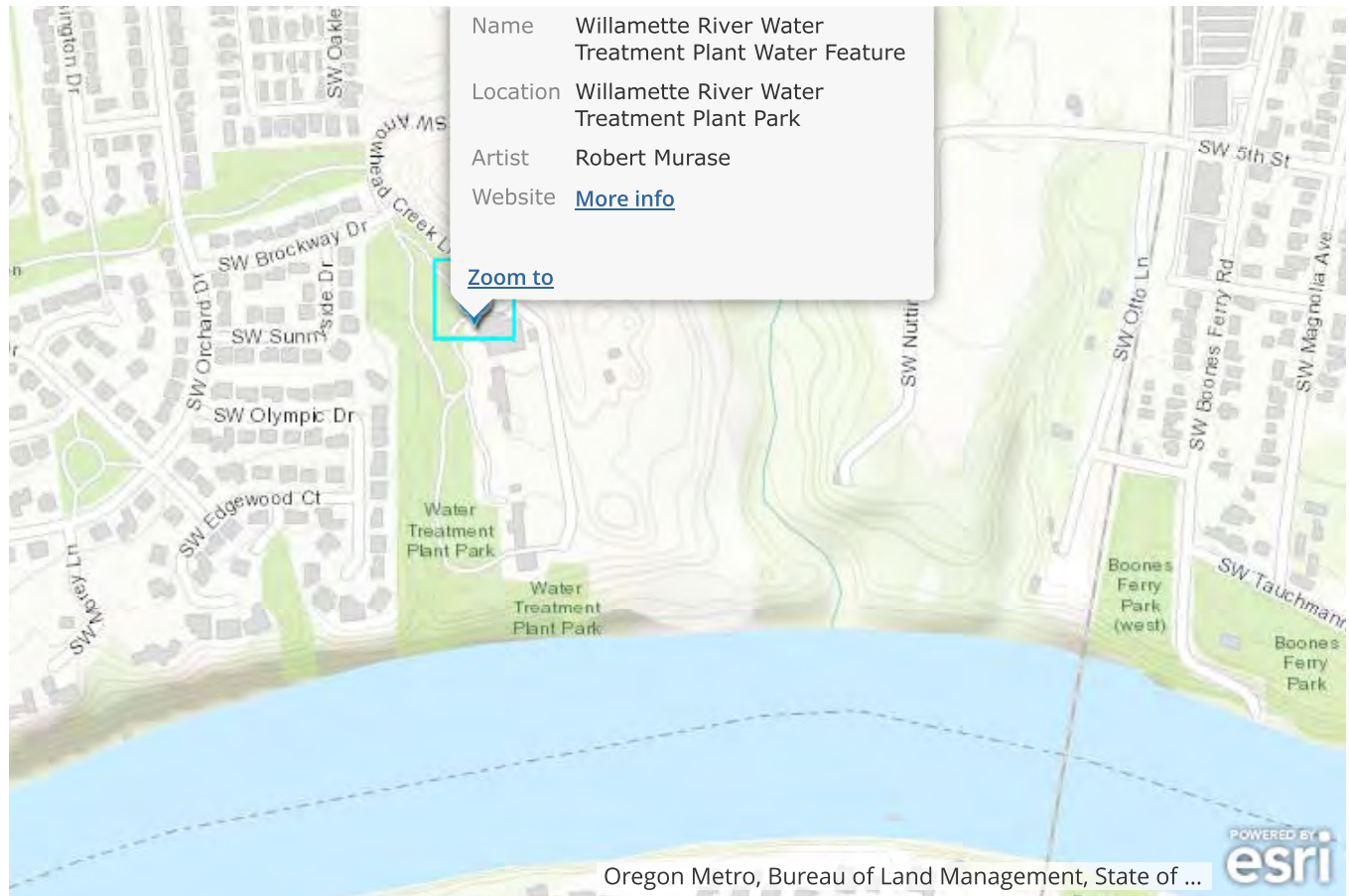
The Old Church was vacant for years and the glass windows were vandalized. Schlicker, a Portland-based artist, was tasked with restoring the pre-1930s, rose caramel opalescent glass windows.





Schlicker restored the broken panes with German crystals crafted by Dan Woodward, which cast rainbows in the sunlight. Some panes were made to look broken so that all the windows match.

Willamette River Water Treatment Plant Park



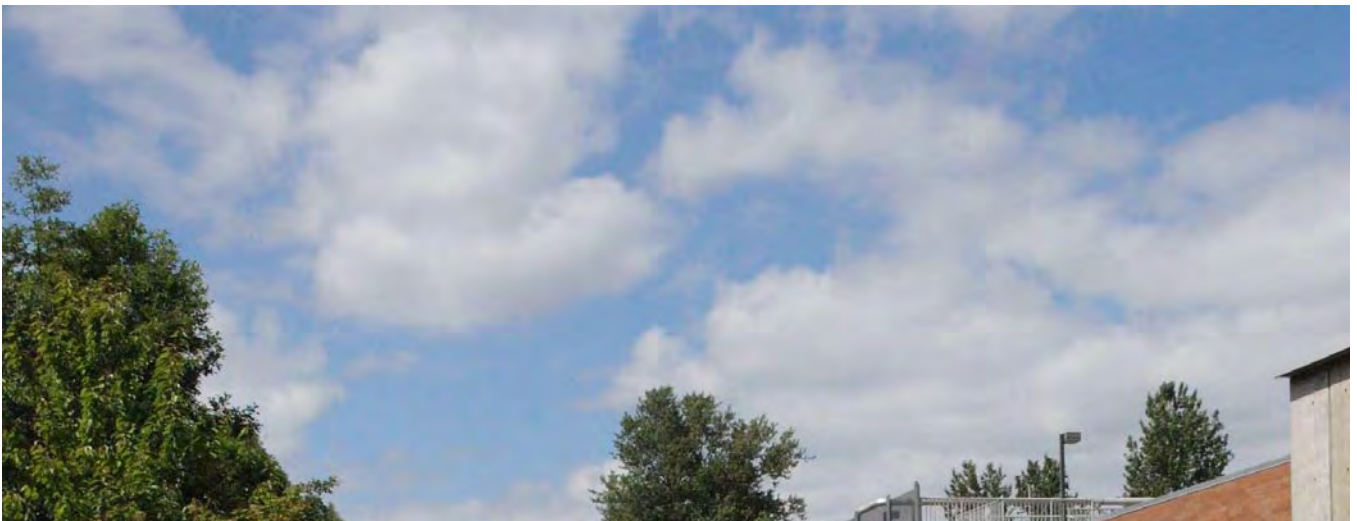
Artwork

-  City Owned
-  Publicly Owned
-  Privately Owned
-  Available Spaces

10350 Arrowhead Creek Lane

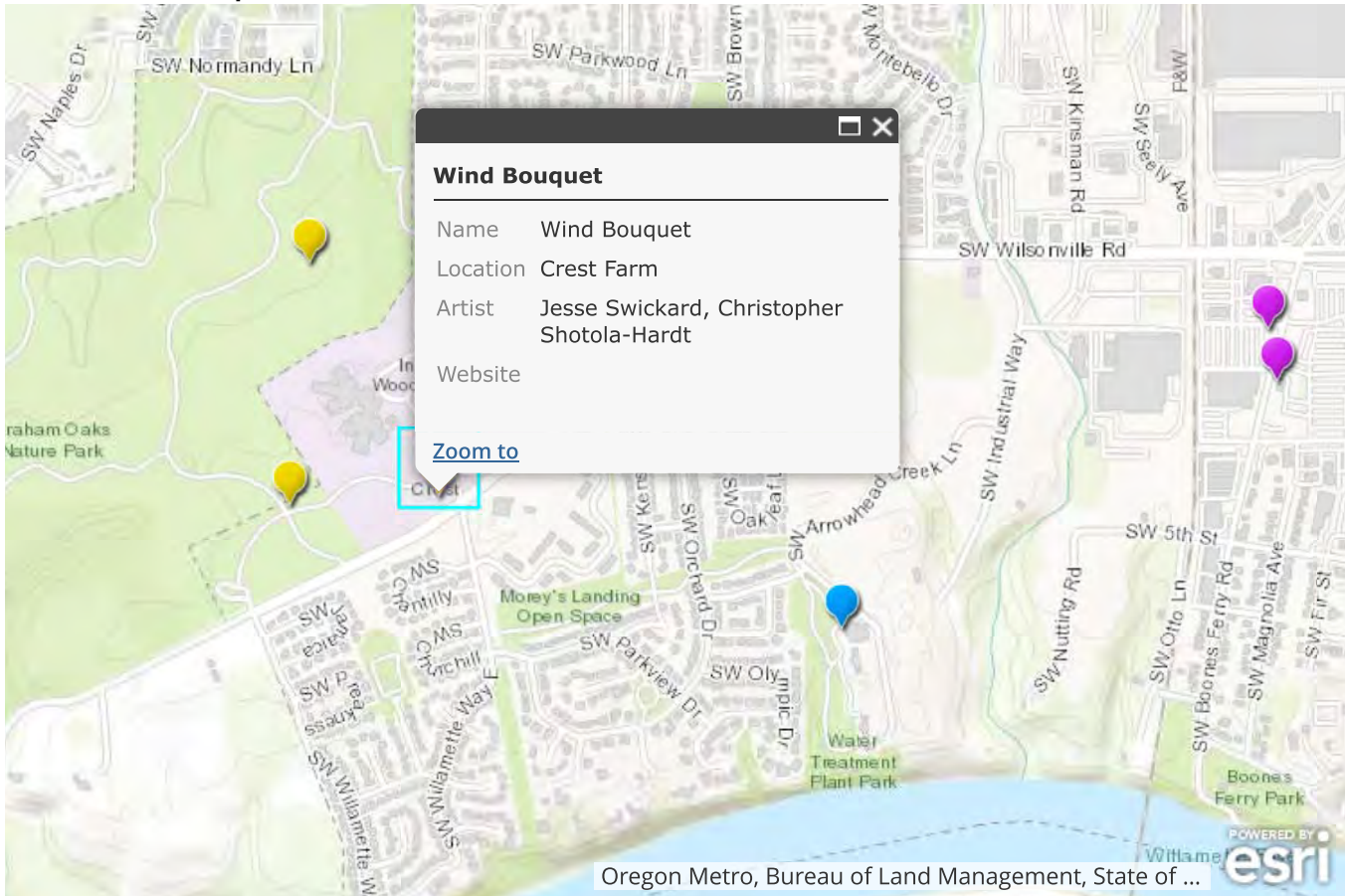
Wilsonville’s third Robert Murase-designed park spans nearly 10 acres adjacent the City’s water treatment plant. The park’s focal point is an impressive water feature that runs along the length of the building.







Wind Bouquet



Artwork

-  City Owned
-  Publicly Owned
-  Privately Owned
-  Available Spaces

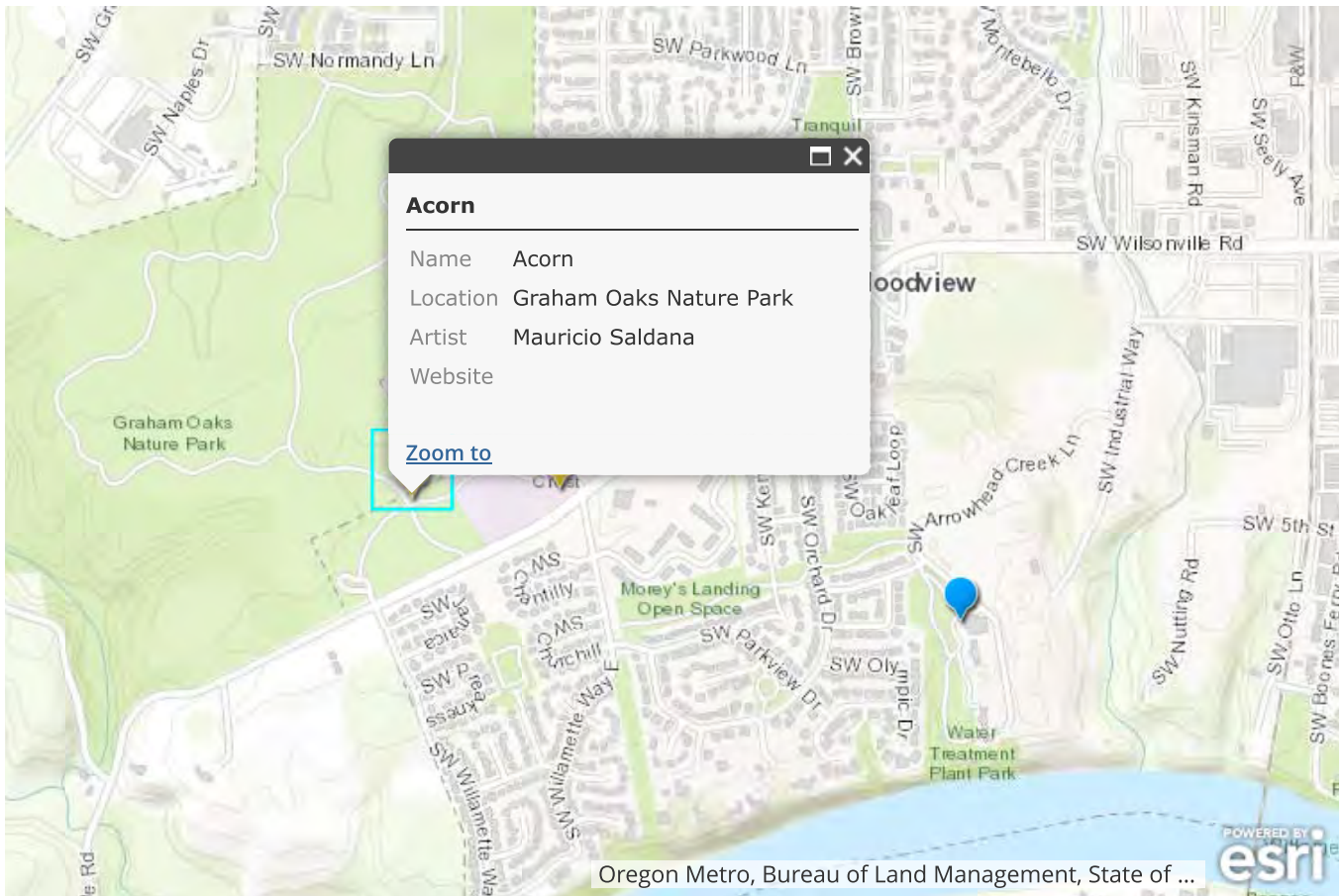
11265 Wilsonville Road



Kinetic Sculpture
Artists: Jesse Swickard, Christopher Shotola-Hardt, Students

This large-scale kinetic sculpture was a collaborative creative effort between Swickard, Shotola-Hardt, and local students.

Graham Oaks Nature Park



Artwork

-  City Owned
-  Publicly Owned
-  Privately Owned
-  Available Spaces

11825 Wilsonville Road

Metro's 250-acre nature park features miles of trails and hidden surprises.



Graham Oaks Nature Park



At the Wetland Overlook spur of the Tonquin Trail

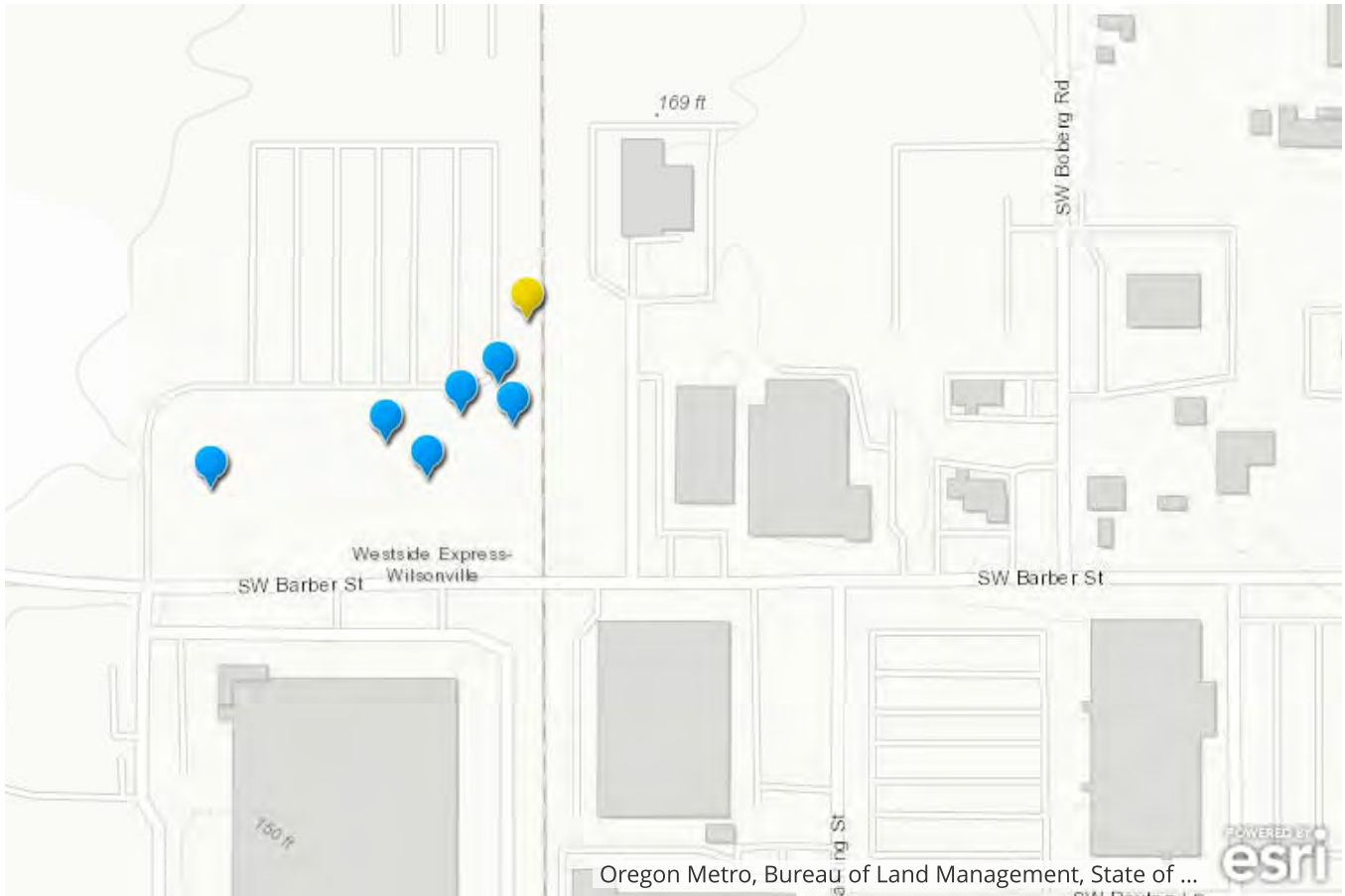
Wetland Overlook

Farther north on multi-use Tonquin Trail, the Wetland Overlook offers an opportunity for visitors to observe wildlife in their natural habitat.



For more information about Metro's Graham Oaks Nature Park, including a free audio walking tour and printable map, please see the park website: _____
_____ (link: <https://www.oregonmetro.gov/parks/graham-oaks-nature-park>)

Wilsonville's Transit Center



Artwork

-  City Owned
-  Publicly Owned
-  Privately Owned
-  Available Spaces

9699 Barber Street

Wilsonville's transit hub is home to SMART buses, WES train service and several pieces of art worth seeing.



Clock Tower





The Clock Tower portrays a mature cherry tree surrounded by birds and insects; the design is inspired by trees found in Wilsonville's sister city of Kitakata, Japan

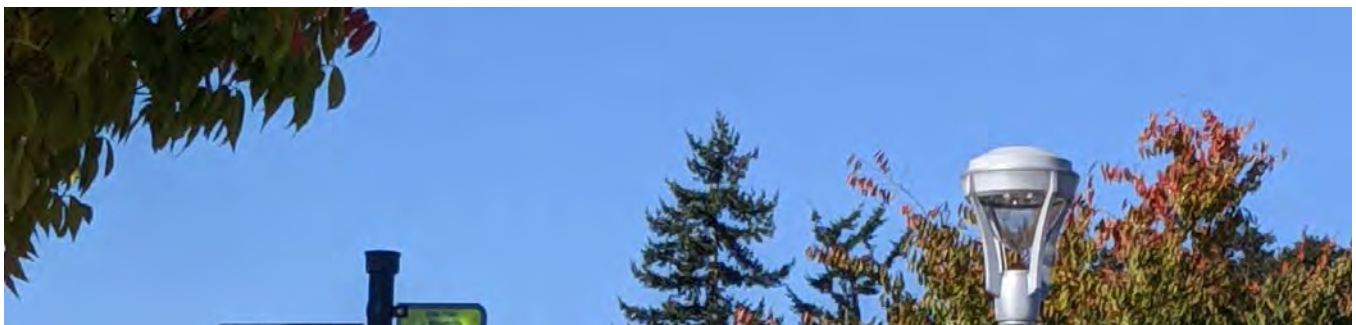
At dusk, the 35-foot tower lights up from bottom to top, illuminating the color stained glass details; imbedded speakers provide musical accompaniment

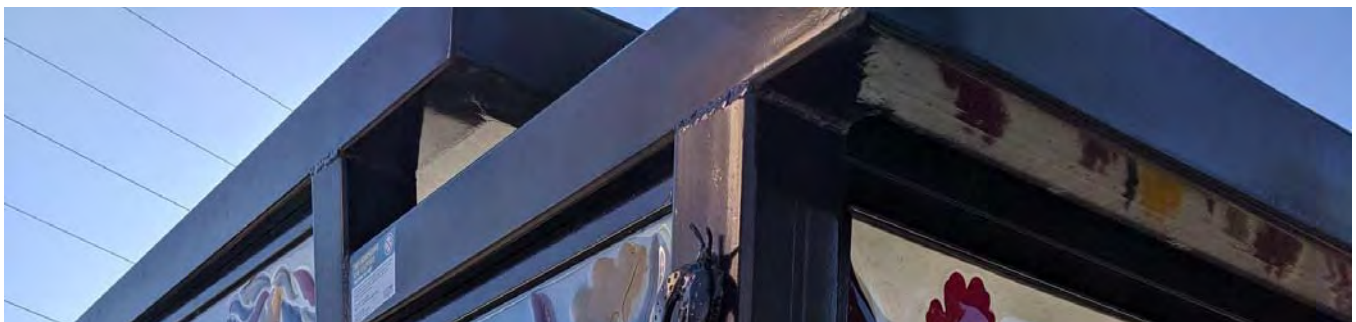


Bus Shelters



Across the bus loop, there are two shelters featuring colorful, whimsical foliage







Accent Panels



A few steps away from the clock tower, the same artist has crafted custom accent panels on the door to the SMART Transit Operations building.

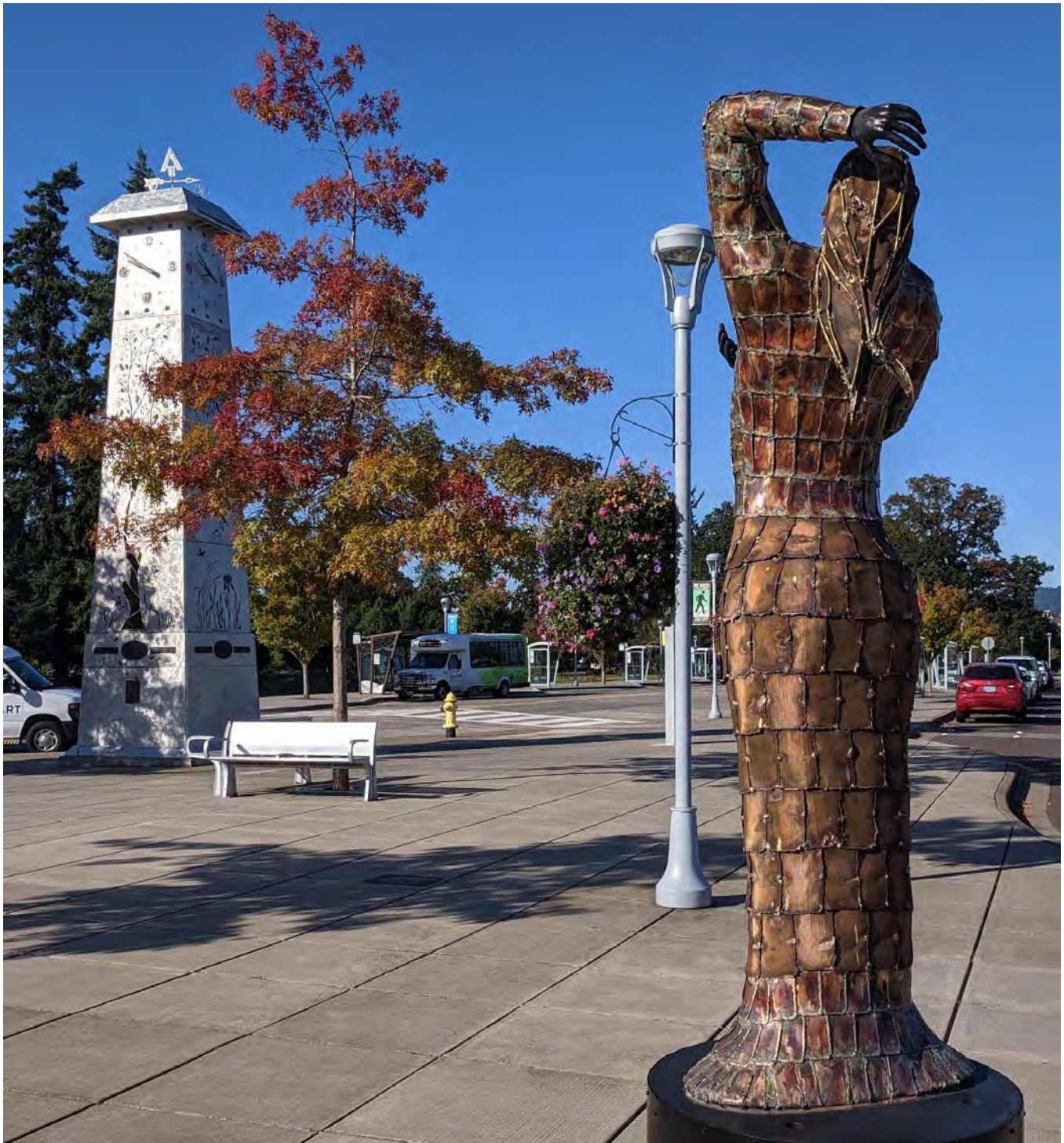


Like the Clock Tower, these nine-foot-high panels illuminate at night and feature the cherry tree, birds and insects.

Let's Dance



As visitors continue toward the WES platform, they'll find it hard to miss this stunning piece.



The Wilsonville Interactivator



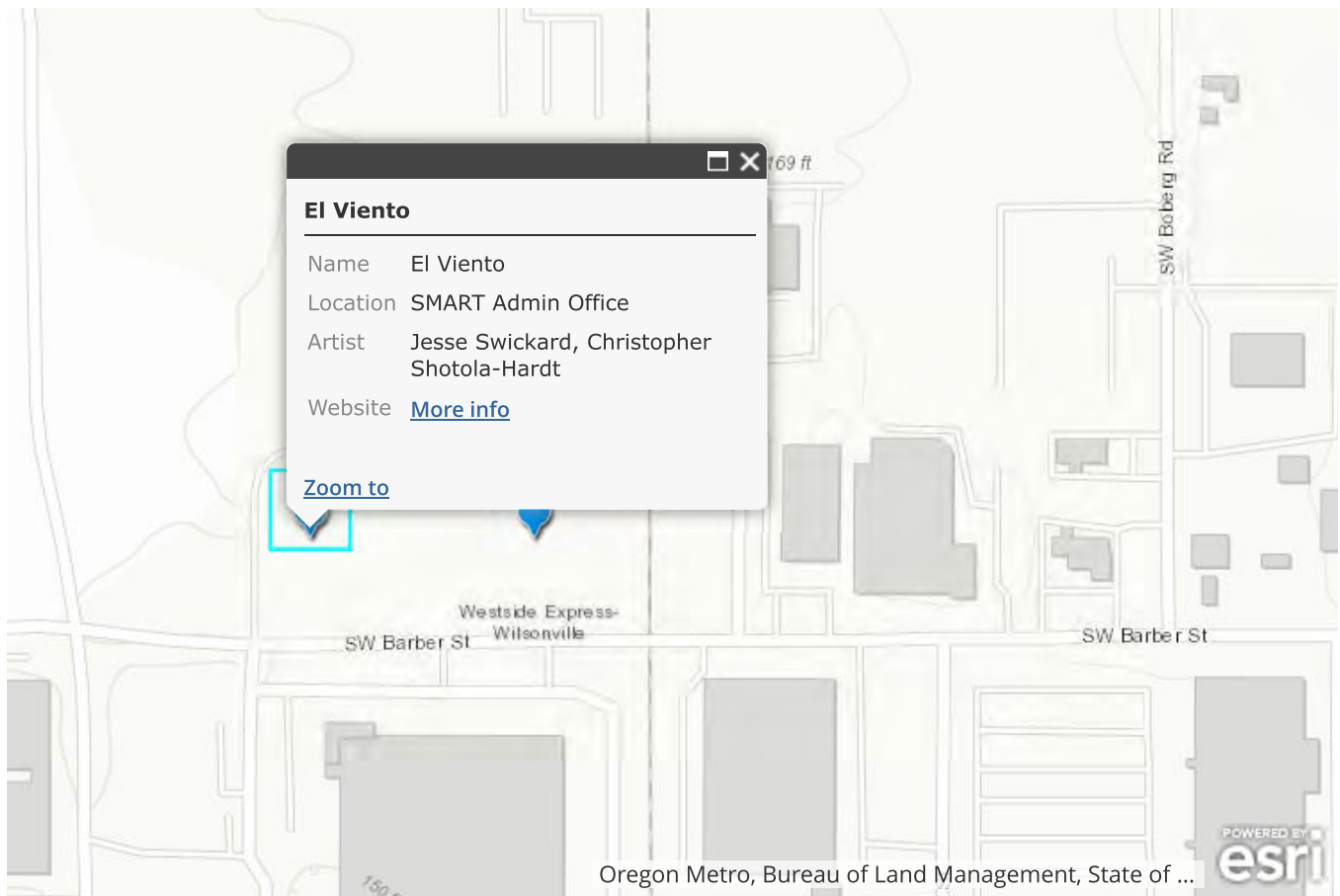
Located on the WES platform, the Interactivator is one of a five of 'Interactivators', located at each of the WES stops.





Kinetic sculptures on steel table

El Viento



Artwork

-  City Owned
-  Publicly Owned
-  Privately Owned
-  Available Spaces

Coming soon!

El Viento will be installed in the coming months at the Wilsonville Transit Center's entrance to greet commuters.





SMART Electric Buses



Collaborative Art on the move!

Student artists were commissioned to design artistic wraps for the two new SMART electric buses. Wilsonville High School art teacher Christopher Shotola-Hardt and Arts & Technology High School art teacher Philip Glass mentored students in this collaborative effort.



Students presenters, December 17, 2018

The students presented their final design, which incorporates familiar sights in Wilsonville, during a City Council work session.

SMART Transit is committed to fostering creativity and collaboration with Wilsonville students. Learn more at [SMART Art](https://www.ridesmart.com/transit/page/smart-art) (link: <https://www.ridesmart.com/transit/page/smart-art>).

The Piazza at Villebois



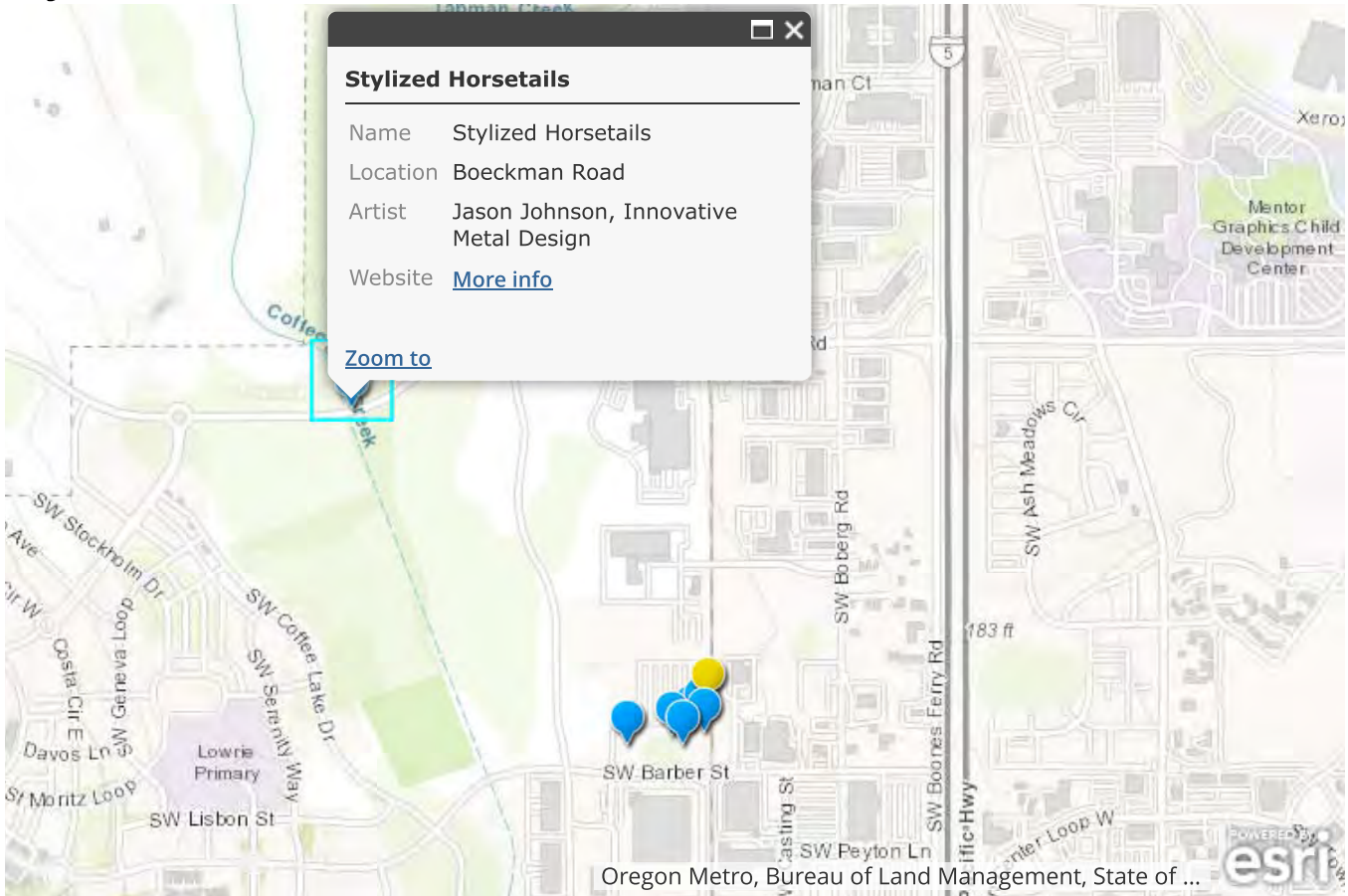
At the corner of Barber Street and Villebois Drive

The piazza includes a fountain, a children's maze and interactive animal masks.





Stylized Horsetails

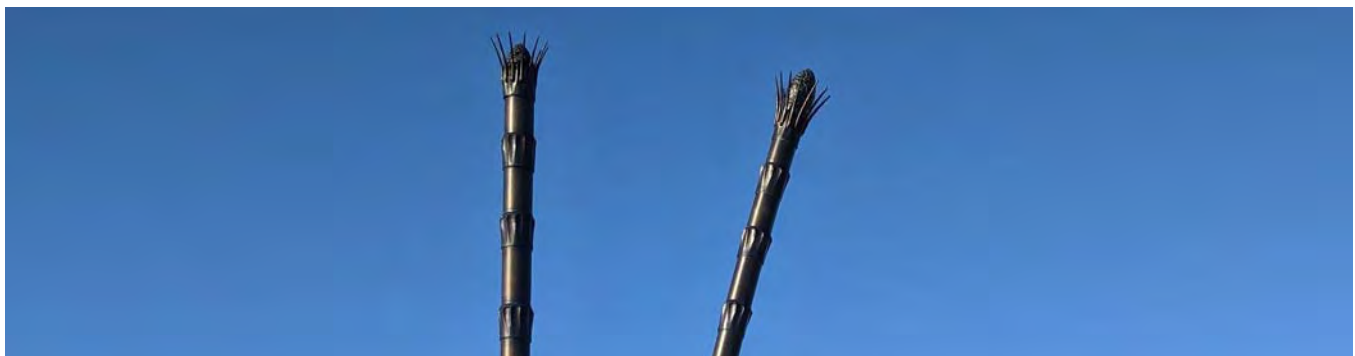


Artwork

-  City Owned
-  Publicly Owned
-  Privately Owned
-  Available Spaces

On Boeckman Road, between Kinsman Road and Villebois Drive

This artwork is best experienced on foot or by bike!





Ten bronze horsetails evoke an image of what the adjacent Coffee Lake Creek Natural Area would have looked like long ago, before the unique landscape was shaped by floods.





Argyle Square



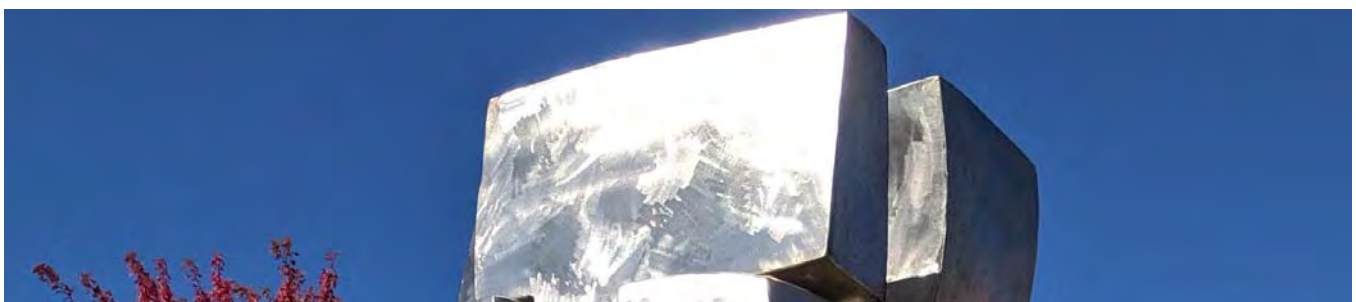
Artwork

-  City Owned
-  Publicly Owned
-  Privately Owned
-  Available Spaces

Argyle Avenue and Jack Burns Boulevard

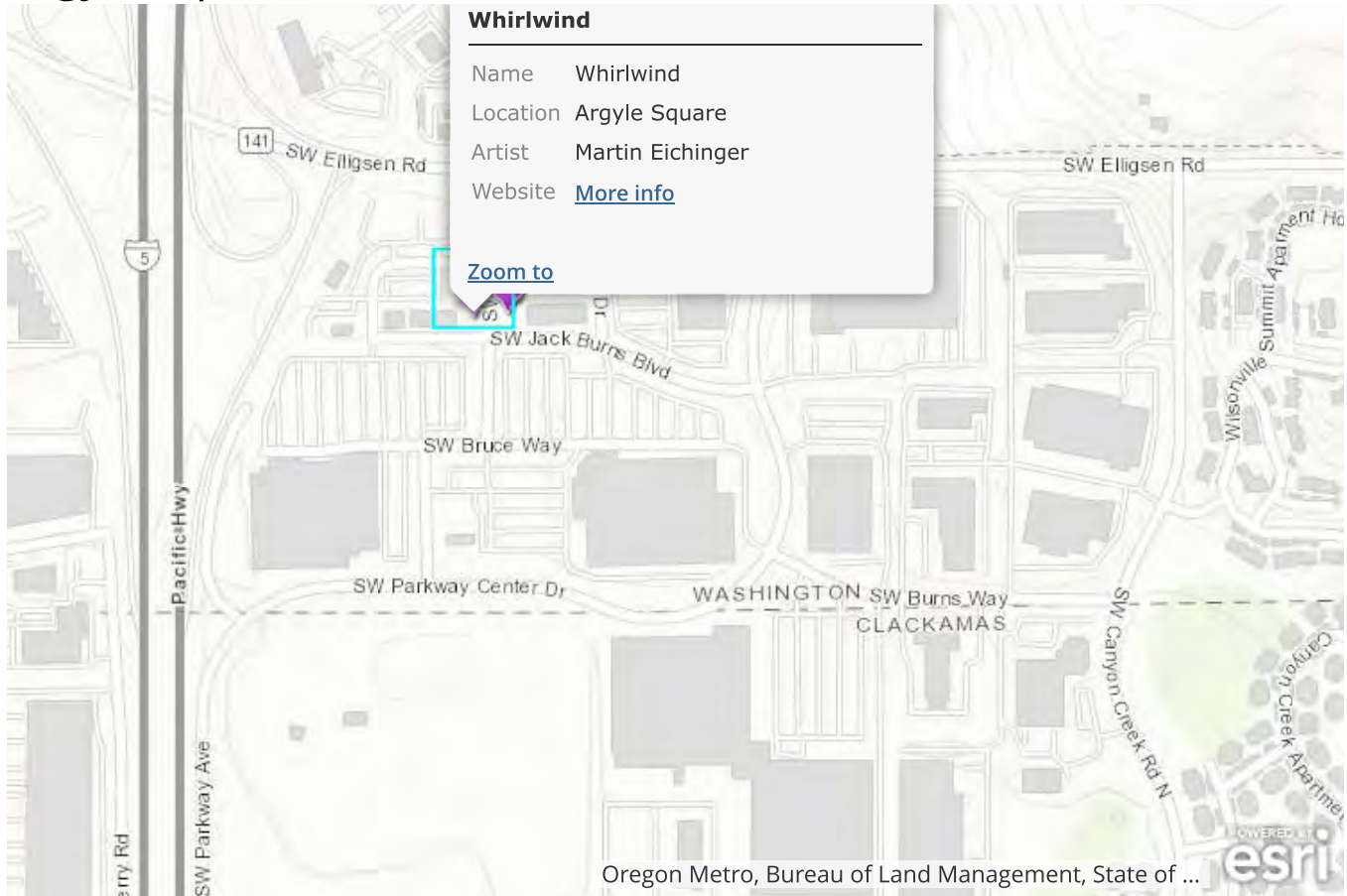
Big John 2022

On the northeast corner of the intersection, it's hard to miss this towering abstract piece.





Argyle Square



Artwork

-  City Owned
-  Publicly Owned
-  Privately Owned
-  Available Spaces

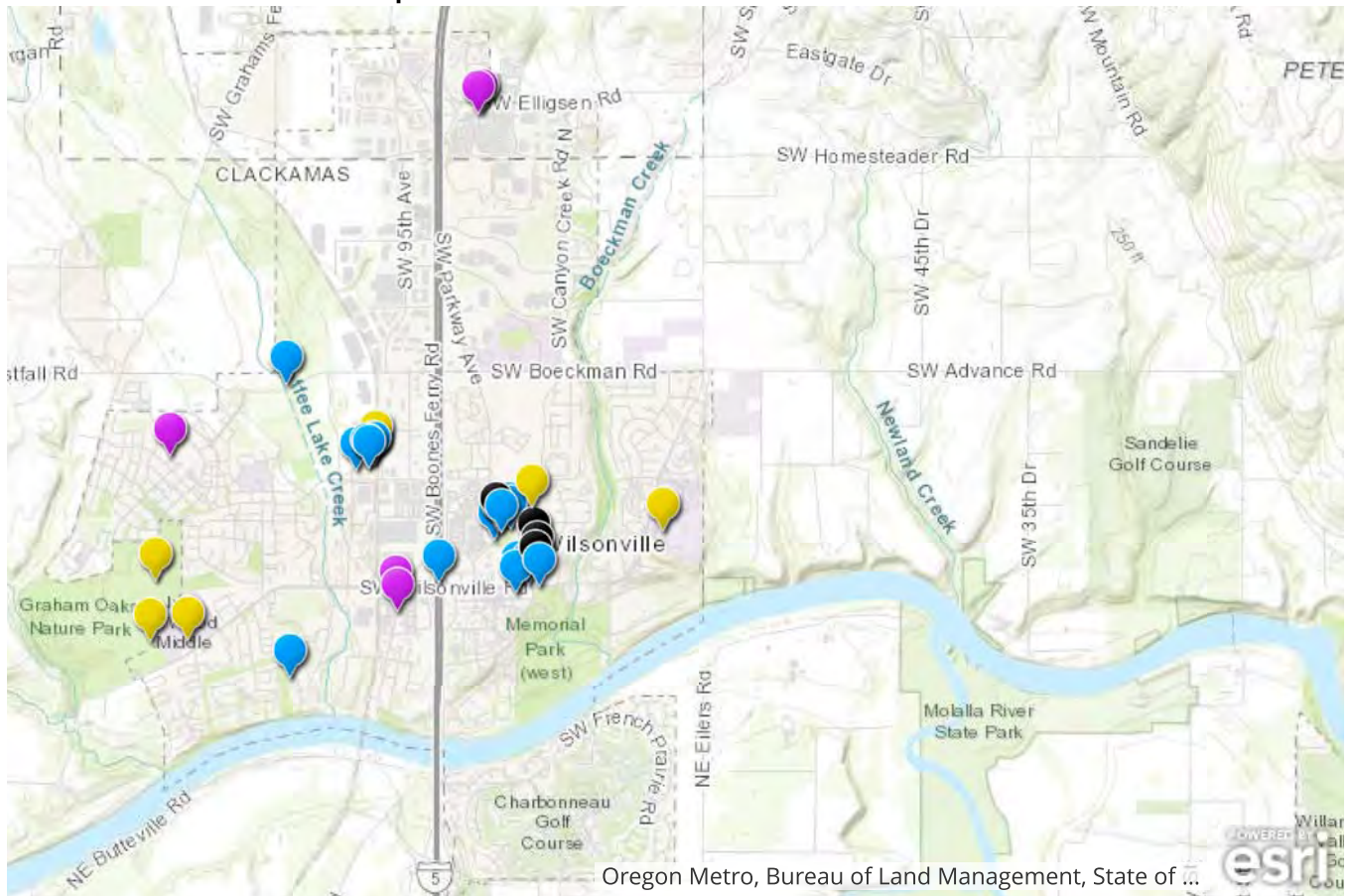
Argyle Avenue and Jack Burns Boulevard

Located on the northwest corner of the intersection, a statue of two dancing figures.



Whirlwind is privately owned statue.

Wilsonville Art Map



Artwork

-  City Owned
-  Publicly Owned
-  Privately Owned
-  Available Spaces

We hope you enjoyed the tour! Click on any of the pins to revisit the featured artwork.



Is there other art that should be included in the tour? Do you have a compelling story to share about your interaction with art in Wilsonville? Visit “[Let’s Talk, Wilsonville!](https://www.letstalkwilsonville.com/Wilsonville-Art-Tour) (link: <https://www.letstalkwilsonville.com/Wilsonville-Art-Tour>),” to share your questions, insight and other feedback about local art. We’d love to hear from you.



"Sunrise in the City"

"Guardian"
City of Wilsonville

"Big John 2002"
Argyle Square

"Whirlwind"
Argyle Square

"Flight of the Moon"
City of Wilsonville

"Family"
Killian & Lowrie families

Privately owned Sculptures

DaNeal Construction Inc.

OREPAC Building Supplies

Community Matching Grant

City of Wilsonville

Argyle Square

Our thanks to sponsors of our 2008/2009 rotating exhibit

GUIDE TO PUBLIC SCULPTURE IN WILSONVILLE

2008/2009



Wilsonville Citizens for Public Art
www.wilsonvillepublicart.org

I am enclosing my check for \$
Mail to WCPA, P.O. Box 2812, Wilsonville, OR 97070

Arts, Culture and Heritage Strategy

City of Wilsonville

Email _____

Name/Business/Organization _____

Address and Phone Number _____

If you would like to support the Wilsonville Citizens for Public Art, please complete the form below and enclose your check for the membership level you choose. Steel and Bronze membership levels will be published on the Website. Make checks payable to *Friends of Wilsonville/Public Art*. Your contribution is tax deductible.

Level	Membership Contribution
Brass	\$5 - \$50
Granite	over \$50 - \$250
Steel	over \$250 - \$500
Bronze	over \$500 - \$1000

We invite you to become a member of the WCPA to help support and facilitate the placement of sculpture in the City of Wilsonville.

If you have a passion and commitment to the arts, please contact us for information about the opportunities to support the arts in Wilsonville.

Come explore Wilsonville's outdoor art exhibit. The on-loan rotating sculptures are available for purchase.

Wilsonville's outdoor art exhibit is brought to you by *Wilsonville Citizens for Public Art (WCPA)* in partnership with the City of Wilsonville, local businesses and residents. Our mission is to ensure the arts are an integral part of Wilsonville. WCPA was formed to support the arts, to present exhibits, tours and lectures and to manage the on-loan rotating exhibits of Wilsonville.

WCPA

These sculptures are available for purchase. They will be on display through May 2009.

Please contact Wilsonville Citizens for Public Art (WCPA) for further information or visit our website for current and previous years displays.

www.wilsonvillepublicart.org

The artist may be reached via the following e-mail addresses:

- Laurel Hagner laurel@glassometry.com
- Ivan McLean info@edelia.com
- Jill Torberson Jill@weldmetalworks.com
- Jesse Swickard jesseswickard@hotmail.com
- Nosivad nosivad@stpaultel.com
- Mark Twain Stevenson Mts2@olypen.com

Wilsonville Citizens for Public Art
PO Box 2812
Wilsonville, OR 97070





1 Stylized Horsetails
Jason Johnson
Architectural Bronze
Boeckman Road



2 Sunrise in the City
Jesse Swickard
Steel
Fun Center



3 Whirlwind
Martin Eichinger
Bronze
Argyle Square



4 Big John 2002
Bruce West
Burnished Stainless Steel
Argyle Square



5 Guardian
Jesse Swickard
Steel
Korean War Memorial



16 Future Sculpture Site
Light Rail Station



15 Spotted Owl
Jesse Swickard
Powdered Coated Steel
Visitor Center North



14 The Old Rooster
Mark Twain Stevenson
Bronze
Visitor Center South



13 Look Up
Nosivad
Metal
Walgreens



12 Family
Wesley Bullock
Steel
Boones Ferry Rd. & Albertsons



11 Flight of the Moon
Laurel Marie Hagner
Steel and Tempered Glass
Library at Wilsonville Road



10 Suspended Disks
Jill Torberson
Steel Silver Coat
Library at Rebekah St.



9 Re-Invention
Iyan McLean
Steel and Concrete
Library at Memorial Drive



6 The Beginning of Wind
Laurel M. Hagner
Powdered Coated Steel,
Copper & Laminated Glass
City Hall



7 Peacock Feathers
Jill Torberson
Steel
Public Works Entry



8 Peace Keeper
Jesse Swickard
Galvanized Steel
Public Works Berm



Private Collection

Public Sculpture, changing exhibit