

**From The Director's Office:**

Making progress on the Public Works Complex.

Below are photos of the trench drain inside the Warehouse building. Photo on the left shows placement of re-inforcement bars. Photo on the right shows the sloped finished grade of the concrete into the trench. The trench drain will collect any excess water dripping from the vehicles or equipment parked inside the warehouse which will help ensure the area stays clean and safe for staff.



Below are photos showing the form work and the finish product for the footing and columns for the Decant building. This building will be used to dewater spoils and debris collected from streets and stormwater system. Once the majority of the water weight is removed from the lighter material it will be haul to the landfill where disposal costs are based on weight.



**Best Regards,**  
**Delora Kerber, Public Works Director**

## Roads

### Welcome Aboard, Hayden!

Hayden Briggs-Siewert joined the Roads crew this month as our newest Roads Maintenance Specialist. Hayden previously worked with the Oregon City School District and maintained fairway greens at golf courses in the area. We are excited to have a full Roads Maintenance team!



### Winter Weather Response

February brought record-breaking snowfall to the region. Although Wilsonville did not receive as much snow as areas farther north, the crews were still hard at work implementing the City's Snow and Ice Control Plan. De-icing was an important part of our response. De-icer is made of magnesium chloride, a type of salt mixed with a binder, which works best in temperatures between 35—26 F. It can be applied ahead of predicted winter conditions or laid directly on snow and ice to start the melting process. Our crews prioritize safe access to essential services, such as the fire department, the water treatment plant, the wastewater plant, and other City buildings.



*Preparing the sanding trailer*



*Ready to respond!*

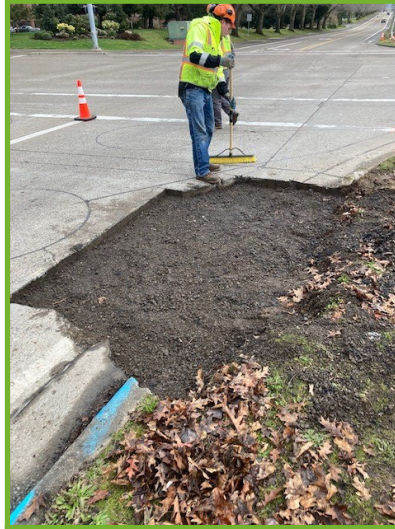
## Roads cont.

### Repairs on Day Road, Commerce Circle and 95th Ave

The crew completed hot asphalt patching in the northwest corner of the city. Availability of asphalt delayed repairs but staff took full advantage of good weather earlier in the month.



*Cutting out the old surface*



*Filling with gravel*



*Hot patching*

### Routine Road Maintenance

Staff also focused on trimming up medians throughout the city and replacing damaged or missing street signs.



*Before*



*After*

## Stormwater

### Welcome, Rodney!

Rodney Hoskins started this month as our newest Utility Maintenance Specialist on the Stormwater crew. He is a recent transplant to Oregon and brings over 10 years of work experience from Montgomery County Roads and Bridges department in Ohio. We are glad to have him on board, filling in our final vacancy in the Roads and Stormwater Division.



### Final Repairs and Structure Maintenance

In January, a sinkhole was discovered on Saint Helens Court near a failed stormwater manhole, which caused a cavity under the asphalt to develop over time. Staff finished up the final repairs at the beginning of the month, before moving on to routine culvert maintenance tasks. Annual inspection and maintenance is underway for culverts, which can include some extra bushwhacking and trimming.



*Working at the sinkhole*



*Trimming back blackberries*

## Utilities—Water

### Turnout Flow Meter Testing

The accuracy of the turnout meters was verified this month. A “turnout” in the water system is where the system transitions from the large transmission main coming from the treatment plant into the distribution piping through a pressure reducing valve. There are 4 turnouts in the system each of which have a flowmeter. Every year a contractor verifies the accuracy of the flow meters. The contractor uses an ultrasonic flowmeter that clamps onto the pipe. The ultrasonic flow meter measures the flow by transmitting and receiving a burst of ultrasound between two transducers and measuring the transit time. The readings of the ultrasonic meter are then compared to the turnout meter readings.



### Large Meter Replacement

The Water crew replaced several large meters this month. After accuracy testing was conducted, these meters showed signs of registering low flows, indicating wear. Staff also replaced meters over 20 years old. Replacement typically involves working in the confines of underground vaults. The meters are bolted into place and over time, they become corroded and seized. A welding torch might be required to remove them. Multiple people are needed to safely remove the old meter and install the new one due to their weight and size.



## Utilities—Wastewater

### Making the Dream Work—with Teamwork!

The Wastewater crew continues to clean and perform CCTV inspections in the Charbonneau district. The crew has been making progress with CCTV and they have completed over 120 inspections.

In addition to their normal sewer maintenance tasks, staff assisted with other assignments, including completing utility locates, helping out with Utility Billing's shut off day, sealing water infrastructure structures, such as vaults and covers, and helping out with stormwater structure repairs.



*Performing a utility locate*



*Vactoring a sinkhole*



*Manhole Repairs—Before and After*

## Facilities

### New Views at City Hall and the Library

Staff installed a new art piece in the hallway on the second floor of City Hall, across from the Finance counter. The piece was previously on display at the Parks and Recreation Administration building. It features a whimsical landscape with floral elements, a Western Meadowlark and a view of City Hall.



Facilities was tasked with mounting the Library's new Geochron map, an interactive digital map that displays data, like weather and daylight in real time. First, they removed an existing window between the circulation area and the staff office. The space was framed, and sheetrock and plywood backing were added for the TV mount. A contractor installed wiring for the electrical and internet connection, painted the new surface. Finally, the screen was mounted and ready for visitors.

