

The National Citizen Survey™

Wilsonville, OR

Technical Appendices

2014

Contents

| | |
|---|----|
| Appendix A: Complete Survey Responses | 1 |
| Appendix B: Benchmark Comparisons | 17 |
| Appendix C: Detailed Survey Methods | 26 |
| Appendix D: Survey Materials | 31 |

The National Citizen Survey™
© 2001-2014 National Research Center, Inc.

National Research Center, Inc.
2955 Valmont Road, Suite 300
Boulder, CO 80301
www.n-r-c.com • 303-444-7863

International City/County Management Association
777 North Capitol Street NE, Suite 500
Washington, DC 20002
www.icma.org • 202-289-ICMA

Appendix A: Complete Survey Responses

Responses excluding “don’t know”

The following pages contain a complete set of responses to each question on the survey, excluding the “don’t know” responses. The percent of respondents giving a particular response is shown followed by the number of respondents (denoted with “N=”).

Table 1: Question 1

| Please rate each of the following aspects of quality of life in Wilsonville: | Excellent | | Good | | Fair | | Poor | | Total | |
|--|-----------|-------|------|-------|------|------|------|------|-------|-------|
| Wilsonville as a place to live | 55% | N=191 | 39% | N=137 | 6% | N=20 | 0% | N=0 | 100% | N=349 |
| Your neighborhood as a place to live | 51% | N=175 | 41% | N=141 | 9% | N=31 | 0% | N=0 | 100% | N=347 |
| Wilsonville as a place to raise children | 54% | N=160 | 39% | N=114 | 7% | N=19 | 0% | N=1 | 100% | N=294 |
| Wilsonville as a place to work | 36% | N=80 | 43% | N=96 | 16% | N=37 | 5% | N=11 | 100% | N=224 |
| Wilsonville as a place to visit | 23% | N=74 | 40% | N=130 | 30% | N=96 | 7% | N=24 | 100% | N=323 |
| Wilsonville as a place to retire | 37% | N=102 | 39% | N=107 | 19% | N=53 | 5% | N=14 | 100% | N=277 |
| The overall quality of life in Wilsonville | 42% | N=145 | 49% | N=169 | 9% | N=31 | 0% | N=0 | 100% | N=345 |

Table 2: Question 2

| Please rate each of the following characteristics as they relate to Wilsonville as a whole: | Excellent | | Good | | Fair | | Poor | | Total | |
|--|-----------|-------|------|-------|------|------|------|------|-------|-------|
| Overall feeling of safety in Wilsonville | 45% | N=157 | 48% | N=165 | 7% | N=24 | 0% | N=1 | 100% | N=348 |
| Overall ease of getting to the places you usually have to visit | 41% | N=144 | 45% | N=157 | 12% | N=41 | 2% | N=7 | 100% | N=348 |
| Quality of overall natural environment in Wilsonville | 51% | N=176 | 42% | N=143 | 7% | N=22 | 1% | N=2 | 100% | N=344 |
| Overall "built environment" of Wilsonville (including overall design, buildings, parks and transportation systems) | 36% | N=123 | 45% | N=154 | 14% | N=50 | 5% | N=17 | 100% | N=344 |
| Health and wellness opportunities in Wilsonville | 28% | N=85 | 48% | N=148 | 21% | N=63 | 4% | N=11 | 100% | N=308 |
| Overall opportunities for education and enrichment | 32% | N=92 | 40% | N=114 | 26% | N=74 | 2% | N=4 | 100% | N=285 |
| Overall economic health of Wilsonville | 28% | N=80 | 47% | N=133 | 23% | N=65 | 2% | N=6 | 100% | N=284 |
| Sense of community | 27% | N=89 | 45% | N=150 | 22% | N=73 | 6% | N=18 | 100% | N=330 |
| Overall image or reputation of Wilsonville | 35% | N=119 | 52% | N=174 | 10% | N=34 | 3% | N=10 | 100% | N=338 |

Table 3: Question 3

| Please indicate how likely or unlikely you are to do each of the following: | Very likely | | Somewhat likely | | Somewhat unlikely | | Very unlikely | | Total | |
|---|-------------|-------|-----------------|-------|-------------------|------|---------------|------|-------|-------|
| Recommend living in Wilsonville to someone who asks | 66% | N=229 | 27% | N=94 | 4% | N=14 | 3% | N=9 | 100% | N=345 |
| Remain in Wilsonville for the next five years | 53% | N=179 | 35% | N=119 | 5% | N=17 | 7% | N=22 | 100% | N=338 |

Table 4: Question 4

| Please rate how safe or unsafe you feel: | Very safe | | Somewhat safe | | Neither safe nor unsafe | | Somewhat unsafe | | Very unsafe | | Total | |
|--|-----------|-------|---------------|------|-------------------------|------|-----------------|-----|-------------|-----|-------|-------|
| In your neighborhood during the day | 84% | N=291 | 14% | N=50 | 2% | N=5 | 1% | N=2 | 0% | N=0 | 100% | N=348 |
| In Wilsonville's commercial areas during the day | 73% | N=248 | 23% | N=78 | 3% | N=10 | 1% | N=3 | 0% | N=0 | 100% | N=340 |

The National Citizen Survey™

Table 5: Question 5

| Please rate each of the following characteristics as they relate to Wilsonville as a whole: | Excellent | | Good | | Fair | | Poor | | Total | |
|---|-----------|-------|------|-------|------|-------|------|------|-------|-------|
| Traffic flow on major streets | 16% | N=55 | 50% | N=169 | 25% | N=84 | 10% | N=33 | 100% | N=341 |
| Ease of travel by car in Wilsonville | 25% | N=86 | 49% | N=168 | 23% | N=78 | 3% | N=10 | 100% | N=342 |
| Ease of travel by public transportation in Wilsonville | 25% | N=55 | 50% | N=109 | 21% | N=46 | 4% | N=9 | 100% | N=219 |
| Ease of travel by bicycle in Wilsonville | 27% | N=65 | 49% | N=118 | 19% | N=45 | 6% | N=15 | 100% | N=243 |
| Ease of walking in Wilsonville | 45% | N=149 | 36% | N=118 | 16% | N=52 | 3% | N=12 | 100% | N=332 |
| Availability of paths and walking trails | 47% | N=155 | 36% | N=117 | 15% | N=50 | 1% | N=4 | 100% | N=326 |
| Cleanliness of Wilsonville | 48% | N=168 | 46% | N=162 | 5% | N=17 | 0% | N=1 | 100% | N=348 |
| Overall appearance of Wilsonville | 44% | N=153 | 48% | N=168 | 8% | N=27 | 0% | N=0 | 100% | N=348 |
| Public places where people want to spend time | 33% | N=112 | 51% | N=171 | 14% | N=46 | 2% | N=7 | 100% | N=336 |
| Variety of housing options | 26% | N=83 | 38% | N=122 | 24% | N=77 | 12% | N=38 | 100% | N=319 |
| Availability of affordable quality housing | 16% | N=48 | 31% | N=93 | 33% | N=98 | 21% | N=62 | 100% | N=302 |
| Fitness opportunities (including exercise classes and paths or trails, etc.) | 32% | N=101 | 49% | N=158 | 15% | N=48 | 4% | N=14 | 100% | N=320 |
| Recreational opportunities | 26% | N=80 | 47% | N=144 | 24% | N=74 | 3% | N=10 | 100% | N=309 |
| Availability of affordable quality food | 27% | N=91 | 40% | N=136 | 30% | N=103 | 3% | N=9 | 100% | N=339 |

Table 6: Question 6

| Please rate each of the following characteristics as they relate to Wilsonville as a whole: | Excellent | | Good | | Fair | | Poor | | Total | |
|---|-----------|------|------|-------|------|-------|------|------|-------|-------|
| Availability of affordable quality child care/preschool | 17% | N=23 | 42% | N=57 | 32% | N=43 | 9% | N=12 | 100% | N=135 |
| K-12 education | 47% | N=99 | 40% | N=85 | 10% | N=22 | 2% | N=5 | 100% | N=212 |
| Adult educational opportunities | 15% | N=33 | 51% | N=115 | 29% | N=65 | 5% | N=12 | 100% | N=226 |
| Opportunities to attend cultural/arts/music activities | 18% | N=54 | 42% | N=125 | 30% | N=90 | 9% | N=28 | 100% | N=297 |
| Opportunities to participate in religious or spiritual events and activities | 27% | N=59 | 48% | N=104 | 20% | N=44 | 4% | N=9 | 100% | N=215 |
| Employment opportunities | 13% | N=27 | 37% | N=76 | 38% | N=77 | 12% | N=24 | 100% | N=204 |
| Shopping opportunities | 15% | N=50 | 39% | N=133 | 36% | N=123 | 10% | N=34 | 100% | N=341 |
| Cost of living in Wilsonville | 5% | N=16 | 38% | N=129 | 39% | N=132 | 18% | N=59 | 100% | N=336 |
| Overall quality of business and service establishments in Wilsonville | 19% | N=66 | 55% | N=187 | 22% | N=77 | 4% | N=13 | 100% | N=343 |
| Vibrant commercial areas | 19% | N=62 | 43% | N=142 | 29% | N=96 | 9% | N=30 | 100% | N=330 |
| Overall quality of new development in Wilsonville | 24% | N=76 | 44% | N=140 | 24% | N=76 | 7% | N=22 | 100% | N=315 |
| Opportunities to participate in social events and activities | 16% | N=47 | 55% | N=161 | 24% | N=71 | 4% | N=12 | 100% | N=291 |
| Opportunities to volunteer | 22% | N=53 | 54% | N=131 | 20% | N=48 | 4% | N=11 | 100% | N=242 |
| Opportunities to participate in community matters | 20% | N=47 | 58% | N=137 | 18% | N=43 | 5% | N=12 | 100% | N=238 |
| Openness and acceptance of the community toward people of diverse backgrounds | 27% | N=71 | 41% | N=107 | 23% | N=59 | 9% | N=23 | 100% | N=260 |
| Neighborliness of residents in Wilsonville | 22% | N=71 | 54% | N=175 | 17% | N=57 | 7% | N=22 | 100% | N=324 |

Table 7: Question 7

| Please indicate whether or not you have done each of the following in the last 12 months. | No | | Yes | | Total | |
|---|-----|-------|-----|-------|-------|-------|
| Made efforts to conserve water | 12% | N=41 | 88% | N=307 | 100% | N=347 |
| Made efforts to make your home more energy efficient | 26% | N=87 | 74% | N=255 | 100% | N=342 |
| Observed a code violation or other hazard in Wilsonville | 74% | N=252 | 26% | N=89 | 100% | N=341 |
| Household member was a victim of a crime in Wilsonville | 91% | N=313 | 9% | N=30 | 100% | N=344 |
| Reported a crime to the police in Wilsonville | 81% | N=281 | 19% | N=65 | 100% | N=346 |

The National Citizen Survey™

| Please indicate whether or not you have done each of the following in the last 12 months. | No | | Yes | | Total | |
|--|-----|-------|-----|-------|-------|-------|
| Stocked supplies in preparation for an emergency | 66% | N=226 | 34% | N=119 | 100% | N=345 |
| Campaigned or advocated for an issue, cause or candidate | 84% | N=290 | 16% | N=56 | 100% | N=346 |
| Contacted the City of Wilsonville (in-person, phone, email or web) for help or information | 65% | N=225 | 35% | N=120 | 100% | N=346 |
| Contacted Wilsonville elected officials (in-person, phone, email or web) to express your opinion | 91% | N=313 | 9% | N=33 | 100% | N=346 |

Table 8: Question 8

| In the last 12 months, about how many times, if at all, have you or other household members done each of the following in Wilsonville? | 2 times a week or more | | 2-4 times a month | | Once a month or less | | Not at all | | Total | |
|--|------------------------|-------|-------------------|-------|----------------------|-------|------------|-------|-------|-------|
| Used Wilsonville recreation centers or their services | 16% | N=54 | 14% | N=48 | 33% | N=114 | 37% | N=126 | 100% | N=341 |
| Visited a neighborhood park or City park | 38% | N=130 | 26% | N=89 | 27% | N=95 | 9% | N=32 | 100% | N=347 |
| Used Wilsonville public libraries or their services | 15% | N=53 | 33% | N=115 | 31% | N=108 | 20% | N=69 | 100% | N=345 |
| Participated in religious or spiritual activities in Wilsonville | 9% | N=30 | 11% | N=37 | 11% | N=38 | 69% | N=238 | 100% | N=343 |
| Attended a City-sponsored event | 2% | N=7 | 4% | N=13 | 46% | N=157 | 48% | N=163 | 100% | N=340 |
| Used bus, rail, subway or other public transportation instead of driving | 7% | N=24 | 7% | N=24 | 21% | N=72 | 65% | N=225 | 100% | N=344 |
| Carpooled with other adults or children instead of driving alone | 13% | N=44 | 13% | N=46 | 16% | N=57 | 58% | N=199 | 100% | N=346 |
| Walked or biked instead of driving | 27% | N=94 | 19% | N=65 | 30% | N=103 | 23% | N=81 | 100% | N=343 |
| Volunteered your time to some group/activity in Wilsonville | 7% | N=23 | 8% | N=28 | 20% | N=69 | 66% | N=226 | 100% | N=345 |
| Participated in a club | 4% | N=12 | 8% | N=27 | 8% | N=29 | 80% | N=272 | 100% | N=340 |
| Talked to or visited with your immediate neighbors | 53% | N=183 | 24% | N=83 | 11% | N=38 | 12% | N=42 | 100% | N=346 |
| Done a favor for a neighbor | 23% | N=79 | 26% | N=91 | 28% | N=97 | 23% | N=79 | 100% | N=346 |

Table 9: Question 9

| Thinking about local public meetings (of local elected officials like City Council or County Commissioners, advisory boards, town halls, HOA, neighborhood watch, etc.), in the last 12 months, about how many times, if at all, have you or other household members attended or watched a local public meeting? | 2 times a week or more | | 2-4 times a month | | Once a month or less | | Not at all | | Total | |
|--|------------------------|-----|-------------------|------|----------------------|------|------------|-------|-------|-------|
| Attended a local public meeting | 1% | N=2 | 2% | N=8 | 17% | N=59 | 80% | N=272 | 100% | N=341 |
| Watched (online or on television) a local public meeting | 0% | N=1 | 5% | N=18 | 17% | N=57 | 78% | N=265 | 100% | N=341 |

Table 10: Question 10

| Please rate the quality of each of the following services in Wilsonville: | Excellent | | Good | | Fair | | Poor | | Total | |
|---|-----------|-------|------|-------|------|------|------|------|-------|-------|
| Police/Sheriff services | 32% | N=91 | 50% | N=143 | 12% | N=35 | 5% | N=15 | 100% | N=284 |
| Fire services | 56% | N=128 | 38% | N=86 | 5% | N=11 | 1% | N=2 | 100% | N=227 |
| Ambulance or emergency medical services | 50% | N=102 | 43% | N=87 | 7% | N=14 | 0% | N=0 | 100% | N=204 |
| Crime prevention | 29% | N=70 | 50% | N=121 | 16% | N=40 | 5% | N=13 | 100% | N=244 |
| Fire prevention and education | 32% | N=64 | 54% | N=108 | 13% | N=26 | 2% | N=3 | 100% | N=202 |
| Traffic enforcement | 21% | N=58 | 50% | N=137 | 20% | N=57 | 9% | N=24 | 100% | N=277 |
| Street repair | 28% | N=88 | 47% | N=146 | 23% | N=73 | 2% | N=5 | 100% | N=312 |
| Street cleaning | 38% | N=124 | 49% | N=162 | 12% | N=41 | 1% | N=2 | 100% | N=329 |
| Street lighting | 38% | N=126 | 50% | N=167 | 12% | N=41 | 0% | N=1 | 100% | N=336 |
| Sidewalk maintenance | 31% | N=101 | 52% | N=166 | 15% | N=49 | 1% | N=4 | 100% | N=321 |
| Traffic signal timing | 21% | N=69 | 43% | N=139 | 27% | N=87 | 10% | N=31 | 100% | N=325 |
| Bus or transit services | 36% | N=77 | 48% | N=103 | 13% | N=28 | 4% | N=8 | 100% | N=217 |

The National Citizen Survey™

| Please rate the quality of each of the following services in Wilsonville: | Excellent | | Good | | Fair | | Poor | | Total | |
|--|-----------|-------|------|-------|------|------|------|------|-------|-------|
| Garbage collection | 39% | N=128 | 49% | N=164 | 11% | N=36 | 1% | N=4 | 100% | N=333 |
| Recycling | 38% | N=129 | 47% | N=160 | 13% | N=45 | 1% | N=4 | 100% | N=337 |
| Yard waste pick-up | 40% | N=105 | 46% | N=120 | 11% | N=29 | 3% | N=8 | 100% | N=263 |
| Storm drainage | 27% | N=73 | 56% | N=151 | 16% | N=44 | 1% | N=3 | 100% | N=271 |
| Drinking water | 37% | N=126 | 44% | N=148 | 14% | N=49 | 4% | N=14 | 100% | N=336 |
| Sewer services | 35% | N=105 | 54% | N=160 | 7% | N=22 | 4% | N=11 | 100% | N=298 |
| Power (electric and/or gas) utility | 39% | N=129 | 50% | N=164 | 10% | N=32 | 2% | N=6 | 100% | N=331 |
| City of Wilsonville billing | 27% | N=77 | 49% | N=137 | 19% | N=54 | 5% | N=14 | 100% | N=283 |
| City parks | 55% | N=180 | 39% | N=129 | 5% | N=16 | 1% | N=5 | 100% | N=330 |
| Recreation programs or classes | 25% | N=54 | 55% | N=118 | 16% | N=34 | 5% | N=10 | 100% | N=216 |
| Recreation centers or facilities | 27% | N=63 | 48% | N=111 | 20% | N=46 | 5% | N=12 | 100% | N=231 |
| Land use, planning and zoning | 15% | N=35 | 39% | N=94 | 33% | N=78 | 13% | N=31 | 100% | N=238 |
| Code enforcement (weeds, abandoned buildings, etc.) | 23% | N=46 | 50% | N=103 | 22% | N=44 | 6% | N=12 | 100% | N=206 |
| Animal control | 21% | N=42 | 54% | N=108 | 19% | N=38 | 5% | N=11 | 100% | N=200 |
| Economic development | 17% | N=42 | 49% | N=118 | 24% | N=58 | 10% | N=25 | 100% | N=244 |
| Public library services | 59% | N=176 | 35% | N=105 | 6% | N=17 | 0% | N=0 | 100% | N=298 |
| Public information services | 29% | N=70 | 52% | N=127 | 17% | N=41 | 3% | N=6 | 100% | N=245 |
| Cable television | 16% | N=42 | 43% | N=112 | 29% | N=74 | 12% | N=30 | 100% | N=258 |
| Emergency preparedness (services that prepare the community for natural disasters or other emergency situations) | 15% | N=23 | 37% | N=57 | 35% | N=54 | 13% | N=20 | 100% | N=153 |
| Preservation of natural areas such as open space, farmlands and greenbelts | 28% | N=85 | 51% | N=154 | 15% | N=46 | 5% | N=14 | 100% | N=299 |
| Wilsonville open space | 28% | N=85 | 51% | N=157 | 20% | N=62 | 1% | N=3 | 100% | N=307 |
| City-sponsored special events | 23% | N=57 | 58% | N=143 | 16% | N=40 | 2% | N=6 | 100% | N=246 |
| Overall customer service by Wilsonville employees (police, receptionists, planners, etc.) | 27% | N=71 | 55% | N=148 | 12% | N=33 | 6% | N=15 | 100% | N=268 |

Table 11: Question 11

| Overall, how would you rate the quality of the services provided by each of the following? | Excellent | | Good | | Fair | | Poor | | Total | |
|--|-----------|-------|------|-------|------|------|------|------|-------|-------|
| The City of Wilsonville | 32% | N=102 | 53% | N=169 | 11% | N=35 | 3% | N=10 | 100% | N=315 |
| The Federal Government | 7% | N=19 | 37% | N=104 | 32% | N=92 | 25% | N=70 | 100% | N=284 |

Table 12: Question 12

| Please rate the following categories of Wilsonville government performance: | Excellent | | Good | | Fair | | Poor | | Total | |
|---|-----------|------|------|-------|------|------|------|------|-------|-------|
| The value of services for the taxes paid to Wilsonville | 17% | N=45 | 52% | N=139 | 23% | N=61 | 9% | N=23 | 100% | N=268 |
| The overall direction that Wilsonville is taking | 19% | N=58 | 49% | N=151 | 20% | N=60 | 12% | N=36 | 100% | N=306 |
| The job Wilsonville government does at welcoming citizen involvement | 20% | N=49 | 48% | N=116 | 23% | N=55 | 10% | N=24 | 100% | N=244 |
| Overall confidence in Wilsonville government | 20% | N=60 | 49% | N=146 | 20% | N=58 | 11% | N=31 | 100% | N=295 |
| Generally acting in the best interest of the community | 20% | N=61 | 49% | N=148 | 20% | N=60 | 11% | N=33 | 100% | N=302 |
| Being honest | 22% | N=52 | 51% | N=118 | 18% | N=41 | 10% | N=22 | 100% | N=232 |
| Treating all residents fairly | 24% | N=56 | 47% | N=110 | 19% | N=45 | 10% | N=23 | 100% | N=236 |

The National Citizen Survey™

Table 13: Question 13

| Please rate how important, if at all, you think it is for the Wilsonville community to focus on each of the following in the coming two years: | Essential | | Very important | | Somewhat important | | Not at all important | | Total | |
|--|-----------|-------|----------------|-------|--------------------|------|----------------------|------|-------|-------|
| | % | N | % | N | % | N | % | N | % | N |
| Overall feeling of safety in Wilsonville | 61% | N=209 | 31% | N=107 | 7% | N=25 | 0% | N=0 | 100% | N=341 |
| Overall ease of getting to the places you usually have to visit | 33% | N=110 | 50% | N=168 | 17% | N=58 | 1% | N=2 | 100% | N=338 |
| Quality of overall natural environment in Wilsonville | 45% | N=151 | 43% | N=145 | 13% | N=43 | 0% | N=0 | 100% | N=340 |
| Overall "built environment" of Wilsonville (including overall design, buildings, parks and transportation systems) | 36% | N=121 | 44% | N=149 | 19% | N=64 | 1% | N=2 | 100% | N=335 |
| Health and wellness opportunities in Wilsonville | 32% | N=110 | 40% | N=136 | 24% | N=81 | 4% | N=13 | 100% | N=339 |
| Overall opportunities for education and enrichment | 33% | N=110 | 40% | N=134 | 24% | N=81 | 3% | N=12 | 100% | N=336 |
| Overall economic health of Wilsonville | 46% | N=158 | 45% | N=154 | 9% | N=29 | 0% | N=0 | 100% | N=342 |
| Sense of community | 33% | N=113 | 46% | N=157 | 20% | N=67 | 1% | N=3 | 100% | N=340 |

Table 14: Question 14

| Please indicate whether each of the following is a major source, minor source, or not a source of information regarding Wilsonville City Government. | Major source | | Minor source | | Not a source | | Total | |
|--|--------------|-------|--------------|-------|--------------|-------|-------|-------|
| | % | N | % | N | % | N | % | N |
| Boones Ferry Messenger (City newsletter) | 48% | N=162 | 39% | N=130 | 13% | N=45 | 100% | N=337 |
| Wilsonville Spokesman | 40% | N=135 | 34% | N=113 | 26% | N=88 | 100% | N=336 |
| Oregonian | 21% | N=70 | 32% | N=106 | 47% | N=157 | 100% | N=334 |
| Local public access television | 12% | N=40 | 29% | N=98 | 59% | N=196 | 100% | N=334 |
| City of Wilsonville website (www.ci.wilsonville.or.us) | 31% | N=105 | 37% | N=122 | 32% | N=107 | 100% | N=334 |
| City's Facebook page | 10% | N=33 | 23% | N=76 | 67% | N=225 | 100% | N=333 |
| City's Twitter account | 5% | N=16 | 14% | N=48 | 81% | N=268 | 100% | N=332 |
| Oregon Live website's Wilsonville blog page | 9% | N=29 | 22% | N=72 | 69% | N=230 | 100% | N=331 |

Table 15: Question D1

| How often, if at all, do you do each of the following, considering all of the times you could? | Never | | Rarely | | Sometimes | | Usually | | Always | | Total | |
|--|-------|------|--------|------|-----------|-------|---------|-------|--------|-------|-------|-------|
| | % | N | % | N | % | N | % | N | % | N | % | N |
| Recycle at home | 0% | N=1 | 3% | N=8 | 3% | N=9 | 22% | N=74 | 72% | N=236 | 100% | N=329 |
| Purchase goods or services from a business located in Wilsonville | 0% | N=0 | 0% | N=0 | 13% | N=44 | 59% | N=193 | 28% | N=92 | 100% | N=329 |
| Eat at least 5 portions of fruits and vegetables a day | 1% | N=2 | 12% | N=38 | 35% | N=115 | 38% | N=123 | 15% | N=50 | 100% | N=328 |
| Participate in moderate or vigorous physical activity | 3% | N=8 | 7% | N=24 | 26% | N=86 | 36% | N=118 | 28% | N=92 | 100% | N=329 |
| Read or watch local news (via television, paper, computer, etc.) | 3% | N=9 | 12% | N=39 | 27% | N=87 | 25% | N=81 | 34% | N=113 | 100% | N=329 |
| Vote in local elections | 10% | N=32 | 8% | N=26 | 13% | N=41 | 21% | N=68 | 49% | N=161 | 100% | N=328 |

Table 16: Question D2

| Would you say that in general your health is: | Percent | Number |
|---|---------|--------|
| Excellent | 26% | N=85 |
| Very good | 43% | N=141 |
| Good | 25% | N=83 |
| Fair | 5% | N=15 |
| Poor | 1% | N=4 |
| Total | 100% | N=328 |

The National Citizen Survey™

Table 17: Question D3

| What impact, if any, do you think the economy will have on your family income in the next 6 months? Do you think the impact will be | Percent | Number |
|---|---------|--------|
| Very positive | 2% | N=5 |
| Somewhat positive | 28% | N=91 |
| Neutral | 48% | N=158 |
| Somewhat negative | 18% | N=60 |
| Very negative | 4% | N=14 |
| Total | 100% | N=328 |

Table 18: Question D4

| What is your employment status? | Percent | Number |
|---------------------------------------|---------|--------|
| Working full time for pay | 62% | N=205 |
| Working part time for pay | 8% | N=27 |
| Unemployed, looking for paid work | 6% | N=19 |
| Unemployed, not looking for paid work | 3% | N=9 |
| Fully retired | 21% | N=70 |
| Total | 100% | N=329 |

Table 19: Question D5

| Do you work inside the boundaries of Wilsonville? | Percent | Number |
|---|---------|--------|
| Yes, outside the home | 21% | N=66 |
| Yes, from home | 9% | N=26 |
| No | 70% | N=217 |
| Total | 100% | N=309 |

Table 20: Question D6

| How many years have you lived in Wilsonville? | Percent | Number |
|---|---------|--------|
| Less than 2 years | 21% | N=68 |
| 2 to 5 years | 29% | N=95 |
| 6 to 10 years | 16% | N=52 |
| 11 to 20 years | 22% | N=73 |
| More than 20 years | 12% | N=38 |
| Total | 100% | N=327 |

Table 21: Question D7

| Which best describes the building you live in? | Percent | Number |
|--|---------|--------|
| One family house detached from any other houses | 40% | N=131 |
| Building with two or more homes (duplex, townhome, apartment or condominium) | 58% | N=190 |
| Mobile home | 2% | N=6 |
| Other | 0% | N=1 |
| Total | 100% | N=327 |

The National Citizen Survey™

Table 22: Question D8

| Is this house, apartment or mobile home... | Percent | Number |
|--|---------|--------|
| Rented | 53% | N=171 |
| Owned | 47% | N=154 |
| Total | 100% | N=325 |

Table 23: Question D9

| About how much is your monthly housing cost for the place you live (including rent, mortgage payment, property tax, property insurance and homeowners' association (HOA) fees)? | Percent | Number |
|---|---------|--------|
| Less than \$300 per month | 4% | N=14 |
| \$300 to \$599 per month | 8% | N=25 |
| \$600 to \$999 per month | 26% | N=84 |
| \$1,000 to \$1,499 per month | 33% | N=106 |
| \$1,500 to \$2,499 per month | 19% | N=61 |
| \$2,500 or more per month | 9% | N=29 |
| Total | 100% | N=319 |

Table 24: Question D10

| Do any children 17 or under live in your household? | Percent | Number |
|---|---------|--------|
| No | 65% | N=211 |
| Yes | 35% | N=116 |
| Total | 100% | N=326 |

Table 25: Question D11

| Are you or any other members of your household aged 65 or older? | Percent | Number |
|--|---------|--------|
| No | 75% | N=248 |
| Yes | 25% | N=81 |
| Total | 100% | N=329 |

Table 26: Question D12

| How much do you anticipate your household's total income before taxes will be for the current year? (Please include in your total income money from all sources for all persons living in your household.) | Percent | Number |
|--|---------|--------|
| Less than \$25,000 | 11% | N=36 |
| \$25,000 to \$49,999 | 30% | N=94 |
| \$50,000 to \$99,999 | 30% | N=93 |
| \$100,000 to \$149,999 | 17% | N=53 |
| \$150,000 or more | 12% | N=38 |
| Total | 100% | N=314 |

Table 27: Question D13

| Are you Spanish, Hispanic or Latino? | Percent | Number |
|--|---------|--------|
| No, not Spanish, Hispanic or Latino | 93% | N=301 |
| Yes, I consider myself to be Spanish, Hispanic or Latino | 7% | N=23 |
| Total | 100% | N=324 |

The National Citizen Survey™

Table 28: Question D14

| What is your race? (Mark one or more races to indicate what race(s) you consider yourself to be.) | Percent | Number |
|---|---------|--------|
| American Indian or Alaskan Native | 3% | N=11 |
| Asian, Asian Indian or Pacific Islander | 5% | N=15 |
| Black or African American | 1% | N=2 |
| White | 92% | N=294 |
| Other | 4% | N=14 |

Total may exceed 100% as respondents could select more than one option.

Table 29: Question D15

| In which category is your age? | Percent | Number |
|--------------------------------|---------|--------|
| 18 to 24 years | 5% | N=18 |
| 25 to 34 years | 27% | N=89 |
| 35 to 44 years | 15% | N=49 |
| 45 to 54 years | 21% | N=69 |
| 55 to 64 years | 11% | N=37 |
| 65 to 74 years | 11% | N=37 |
| 75 years or older | 9% | N=28 |
| Total | 100% | N=327 |

Table 30: Question D16

| What is your sex? | Percent | Number |
|-------------------|---------|--------|
| Female | 55% | N=178 |
| Male | 45% | N=145 |
| Total | 100% | N=323 |

Table 31: Question D17

| Do you consider a cell phone or landline your primary telephone number? | Percent | Number |
|---|---------|--------|
| Cell | 66% | N=216 |
| Land line | 20% | N=67 |
| Both | 14% | N=46 |
| Total | 100% | N=329 |

Responses including “don’t know”

The following pages contain a complete set of responses to each question on the survey, including the “don’t know” responses. The percent of respondents giving a particular response is shown followed by the number of respondents (denoted with “N=”).

Table 32: Question 1

| Please rate each of the following aspects of quality of life in Wilsonville: | Excellent | | Good | | Fair | | Poor | | Don't know | | Total | |
|--|-----------|-------|------|-------|------|------|------|------|------------|-------|-------|-------|
| Wilsonville as a place to live | 55% | N=191 | 39% | N=137 | 6% | N=20 | 0% | N=0 | 0% | N=0 | 100% | N=349 |
| Your neighborhood as a place to live | 50% | N=175 | 40% | N=141 | 9% | N=31 | 0% | N=0 | 0% | N=1 | 100% | N=348 |
| Wilsonville as a place to raise children | 47% | N=160 | 33% | N=114 | 6% | N=19 | 0% | N=1 | 14% | N=49 | 100% | N=342 |
| Wilsonville as a place to work | 24% | N=80 | 28% | N=96 | 11% | N=37 | 3% | N=11 | 34% | N=114 | 100% | N=338 |
| Wilsonville as a place to visit | 22% | N=74 | 38% | N=130 | 28% | N=96 | 7% | N=24 | 5% | N=19 | 100% | N=342 |
| Wilsonville as a place to retire | 30% | N=102 | 31% | N=107 | 15% | N=53 | 4% | N=14 | 20% | N=67 | 100% | N=344 |
| The overall quality of life in Wilsonville | 42% | N=145 | 49% | N=169 | 9% | N=31 | 0% | N=0 | 0% | N=1 | 100% | N=346 |

Table 33: Question 2

| Please rate each of the following characteristics as they relate to Wilsonville as a whole: | Excellent | | Good | | Fair | | Poor | | Don't know | | Total | |
|--|-----------|-------|------|-------|------|------|------|------|------------|------|-------|-------|
| Overall feeling of safety in Wilsonville | 45% | N=157 | 47% | N=165 | 7% | N=24 | 0% | N=1 | 1% | N=2 | 100% | N=350 |
| Overall ease of getting to the places you usually have to visit | 41% | N=144 | 45% | N=157 | 12% | N=41 | 2% | N=7 | 0% | N=0 | 100% | N=348 |
| Quality of overall natural environment in Wilsonville | 50% | N=176 | 41% | N=143 | 6% | N=22 | 1% | N=2 | 1% | N=5 | 100% | N=349 |
| Overall "built environment" of Wilsonville (including overall design, buildings, parks and transportation systems) | 35% | N=123 | 45% | N=154 | 14% | N=50 | 5% | N=17 | 1% | N=2 | 100% | N=346 |
| Health and wellness opportunities in Wilsonville | 24% | N=85 | 43% | N=148 | 18% | N=63 | 3% | N=11 | 12% | N=41 | 100% | N=349 |
| Overall opportunities for education and enrichment | 27% | N=92 | 33% | N=114 | 21% | N=74 | 1% | N=4 | 18% | N=61 | 100% | N=346 |
| Overall economic health of Wilsonville | 23% | N=80 | 38% | N=133 | 19% | N=65 | 2% | N=6 | 18% | N=64 | 100% | N=348 |
| Sense of community | 26% | N=89 | 43% | N=150 | 21% | N=73 | 5% | N=18 | 5% | N=16 | 100% | N=346 |
| Overall image or reputation of Wilsonville | 34% | N=119 | 50% | N=174 | 10% | N=34 | 3% | N=10 | 3% | N=9 | 100% | N=347 |

Table 34: Question 3

| Please indicate how likely or unlikely you are to do each of the following: | Very likely | | Somewhat likely | | Somewhat unlikely | | Very unlikely | | Don't know | | Total | |
|---|-------------|-------|-----------------|-------|-------------------|------|---------------|------|------------|-----|-------|-------|
| Recommend living in Wilsonville to someone who asks | 66% | N=229 | 27% | N=94 | 4% | N=14 | 3% | N=9 | 0% | N=1 | 100% | N=346 |
| Remain in Wilsonville for the next five years | 52% | N=179 | 34% | N=119 | 5% | N=17 | 6% | N=22 | 3% | N=9 | 100% | N=346 |

Table 35: Question 4

| Please rate how safe or unsafe you feel: | Very safe | | Somewhat safe | | Neither safe nor unsafe | | Somewhat unsafe | | Very unsafe | | Don't know | | Total | |
|--|-----------|-------|---------------|------|-------------------------|------|-----------------|-----|-------------|-----|------------|-----|-------|-------|
| In your neighborhood during the day | 83% | N=291 | 14% | N=50 | 2% | N=5 | 1% | N=2 | 0% | N=0 | 0% | N=1 | 100% | N=349 |
| In Wilsonville's commercial areas during the day | 72% | N=248 | 23% | N=78 | 3% | N=10 | 1% | N=3 | 0% | N=0 | 2% | N=5 | 100% | N=345 |

Table 36: Question 5

| Please rate each of the following characteristics as they relate to Wilsonville as a whole: | Excellent | | Good | | Fair | | Poor | | Don't know | | Total | |
|---|-----------|------|------|-------|------|------|------|------|------------|-------|-------|-------|
| Traffic flow on major streets | 16% | N=55 | 49% | N=169 | 24% | N=84 | 10% | N=33 | 2% | N=6 | 100% | N=347 |
| Ease of travel by car in Wilsonville | 25% | N=86 | 48% | N=168 | 22% | N=78 | 3% | N=10 | 2% | N=7 | 100% | N=349 |
| Ease of travel by public transportation in Wilsonville | 16% | N=55 | 32% | N=109 | 13% | N=46 | 3% | N=9 | 36% | N=125 | 100% | N=343 |

The National Citizen Survey™

| Please rate each of the following characteristics as they relate to Wilsonville as a whole: | Excellent | | Good | | Fair | | Poor | | Don't know | | Total | |
|---|-----------|-------|------|-------|------|-------|------|------|------------|------|-------|-------|
| | | | | | | | | | | | | |
| Ease of travel by bicycle in Wilsonville | 19% | N=65 | 35% | N=118 | 13% | N=45 | 4% | N=15 | 28% | N=96 | 100% | N=339 |
| Ease of walking in Wilsonville | 43% | N=149 | 34% | N=118 | 15% | N=52 | 3% | N=12 | 4% | N=14 | 100% | N=346 |
| Availability of paths and walking trails | 45% | N=155 | 34% | N=117 | 14% | N=50 | 1% | N=4 | 6% | N=21 | 100% | N=347 |
| Cleanliness of Wilsonville | 48% | N=168 | 46% | N=162 | 5% | N=17 | 0% | N=1 | 0% | N=0 | 100% | N=348 |
| Overall appearance of Wilsonville | 44% | N=153 | 48% | N=168 | 8% | N=27 | 0% | N=0 | 0% | N=0 | 100% | N=348 |
| Public places where people want to spend time | 32% | N=112 | 49% | N=171 | 13% | N=46 | 2% | N=7 | 3% | N=11 | 100% | N=347 |
| Variety of housing options | 24% | N=83 | 35% | N=122 | 22% | N=77 | 11% | N=38 | 7% | N=26 | 100% | N=345 |
| Availability of affordable quality housing | 14% | N=48 | 27% | N=93 | 29% | N=98 | 18% | N=62 | 12% | N=40 | 100% | N=342 |
| Fitness opportunities (including exercise classes and paths or trails, etc.) | 29% | N=101 | 46% | N=158 | 14% | N=48 | 4% | N=14 | 7% | N=23 | 100% | N=343 |
| Recreational opportunities | 24% | N=80 | 42% | N=144 | 22% | N=74 | 3% | N=10 | 9% | N=32 | 100% | N=340 |
| Availability of affordable quality food | 26% | N=91 | 39% | N=136 | 30% | N=103 | 2% | N=9 | 2% | N=6 | 100% | N=346 |

Table 37: Question 6

| Please rate each of the following characteristics as they relate to Wilsonville as a whole: | Excellent | | Good | | Fair | | Poor | | Don't know | | Total | |
|---|-----------|------|------|-------|------|-------|------|------|------------|-------|-------|-------|
| | | | | | | | | | | | | |
| Availability of affordable quality child care/preschool | 7% | N=23 | 17% | N=57 | 13% | N=43 | 4% | N=12 | 60% | N=206 | 100% | N=341 |
| K-12 education | 29% | N=99 | 25% | N=85 | 6% | N=22 | 1% | N=5 | 38% | N=131 | 100% | N=343 |
| Adult educational opportunities | 10% | N=33 | 34% | N=115 | 19% | N=65 | 4% | N=12 | 34% | N=117 | 100% | N=343 |
| Opportunities to attend cultural/arts/music activities | 16% | N=54 | 36% | N=125 | 26% | N=90 | 8% | N=28 | 14% | N=47 | 100% | N=344 |
| Opportunities to participate in religious or spiritual events and activities | 17% | N=59 | 31% | N=104 | 13% | N=44 | 3% | N=9 | 36% | N=122 | 100% | N=338 |
| Employment opportunities | 8% | N=27 | 22% | N=76 | 23% | N=77 | 7% | N=24 | 40% | N=136 | 100% | N=340 |
| Shopping opportunities | 15% | N=50 | 39% | N=133 | 36% | N=123 | 10% | N=34 | 1% | N=2 | 100% | N=343 |
| Cost of living in Wilsonville | 5% | N=16 | 38% | N=129 | 39% | N=132 | 17% | N=59 | 1% | N=4 | 100% | N=340 |
| Overall quality of business and service establishments in Wilsonville | 19% | N=66 | 54% | N=187 | 22% | N=77 | 4% | N=13 | 0% | N=1 | 100% | N=344 |
| Vibrant commercial areas | 18% | N=62 | 41% | N=142 | 28% | N=96 | 9% | N=30 | 4% | N=12 | 100% | N=342 |
| Overall quality of new development in Wilsonville | 22% | N=76 | 41% | N=140 | 22% | N=76 | 7% | N=22 | 9% | N=29 | 100% | N=345 |
| Opportunities to participate in social events and activities | 14% | N=47 | 47% | N=161 | 21% | N=71 | 4% | N=12 | 16% | N=54 | 100% | N=345 |
| Opportunities to volunteer | 15% | N=53 | 38% | N=131 | 14% | N=48 | 3% | N=11 | 30% | N=102 | 100% | N=345 |
| Opportunities to participate in community matters | 14% | N=47 | 41% | N=137 | 13% | N=43 | 3% | N=12 | 29% | N=100 | 100% | N=338 |
| Openness and acceptance of the community toward people of diverse backgrounds | 21% | N=71 | 31% | N=107 | 17% | N=59 | 7% | N=23 | 24% | N=83 | 100% | N=343 |
| Neighborliness of residents in Wilsonville | 21% | N=71 | 51% | N=175 | 16% | N=57 | 6% | N=22 | 6% | N=21 | 100% | N=345 |

Table 38: Question 7

| Please indicate whether or not you have done each of the following in the last 12 months. | No | | Yes | | Total | |
|--|-----|-------|-----|-------|-------|-------|
| | | | | | | |
| Made efforts to conserve water | 12% | N=41 | 88% | N=307 | 100% | N=347 |
| Made efforts to make your home more energy efficient | 26% | N=87 | 74% | N=255 | 100% | N=342 |
| Observed a code violation or other hazard in Wilsonville | 74% | N=252 | 26% | N=89 | 100% | N=341 |
| Household member was a victim of a crime in Wilsonville | 91% | N=313 | 9% | N=30 | 100% | N=344 |
| Reported a crime to the police in Wilsonville | 81% | N=281 | 19% | N=65 | 100% | N=346 |
| Stocked supplies in preparation for an emergency | 66% | N=226 | 34% | N=119 | 100% | N=345 |
| Campaigned or advocated for an issue, cause or candidate | 84% | N=290 | 16% | N=56 | 100% | N=346 |
| Contacted the City of Wilsonville (in-person, phone, email or web) for help or information | 65% | N=225 | 35% | N=120 | 100% | N=346 |

The National Citizen Survey™

| Please indicate whether or not you have done each of the following in the last 12 months. | No | | Yes | | Total | |
|--|-----|-------|-----|------|-------|-------|
| Contacted Wilsonville elected officials (in-person, phone, email or web) to express your opinion | 91% | N=313 | 9% | N=33 | 100% | N=346 |

Table 39: Question 8

| In the last 12 months, about how many times, if at all, have you or other household members done each of the following in Wilsonville? | 2 times a week or more | | 2-4 times a month | | Once a month or less | | Not at all | | Total | |
|--|------------------------|-------|-------------------|-------|----------------------|-------|------------|-------|-------|-------|
| Used Wilsonville recreation centers or their services | 16% | N=54 | 14% | N=48 | 33% | N=114 | 37% | N=126 | 100% | N=341 |
| Visited a neighborhood park or City park | 38% | N=130 | 26% | N=89 | 27% | N=95 | 9% | N=32 | 100% | N=347 |
| Used Wilsonville public libraries or their services | 15% | N=53 | 33% | N=115 | 31% | N=108 | 20% | N=69 | 100% | N=345 |
| Participated in religious or spiritual activities in Wilsonville | 9% | N=30 | 11% | N=37 | 11% | N=38 | 69% | N=238 | 100% | N=343 |
| Attended a City-sponsored event | 2% | N=7 | 4% | N=13 | 46% | N=157 | 48% | N=163 | 100% | N=340 |
| Used bus, rail, subway or other public transportation instead of driving | 7% | N=24 | 7% | N=24 | 21% | N=72 | 65% | N=225 | 100% | N=344 |
| Carpooled with other adults or children instead of driving alone | 13% | N=44 | 13% | N=46 | 16% | N=57 | 58% | N=199 | 100% | N=346 |
| Walked or biked instead of driving | 27% | N=94 | 19% | N=65 | 30% | N=103 | 23% | N=81 | 100% | N=343 |
| Volunteered your time to some group/activity in Wilsonville | 7% | N=23 | 8% | N=28 | 20% | N=69 | 66% | N=226 | 100% | N=345 |
| Participated in a club | 4% | N=12 | 8% | N=27 | 8% | N=29 | 80% | N=272 | 100% | N=340 |
| Talked to or visited with your immediate neighbors | 53% | N=183 | 24% | N=83 | 11% | N=38 | 12% | N=42 | 100% | N=346 |
| Done a favor for a neighbor | 23% | N=79 | 26% | N=91 | 28% | N=97 | 23% | N=79 | 100% | N=346 |

Table 40: Question 9

| Thinking about local public meetings (of local elected officials like City Council or County Commissioners, advisory boards, town halls, HOA, neighborhood watch, etc.), in the last 12 months, about how many times, if at all, have you or other household members attended or watched a local public meeting? | 2 times a week or more | | 2-4 times a month | | Once a month or less | | Not at all | | Total | |
|--|------------------------|-----|-------------------|------|----------------------|------|------------|-------|-------|-------|
| Attended a local public meeting | 1% | N=2 | 2% | N=8 | 17% | N=59 | 80% | N=272 | 100% | N=341 |
| Watched (online or on television) a local public meeting | 0% | N=1 | 5% | N=18 | 17% | N=57 | 78% | N=265 | 100% | N=341 |

Table 41: Question 10

| Please rate the quality of each of the following services in Wilsonville: | Excellent | | Good | | Fair | | Poor | | Don't know | | Total | |
|---|-----------|-------|------|-------|------|------|------|------|------------|-------|-------|-------|
| Police/Sheriff services | 26% | N=91 | 41% | N=143 | 10% | N=35 | 4% | N=15 | 18% | N=62 | 100% | N=346 |
| Fire services | 37% | N=128 | 25% | N=86 | 3% | N=11 | 0% | N=2 | 34% | N=118 | 100% | N=345 |
| Ambulance or emergency medical services | 30% | N=102 | 25% | N=87 | 4% | N=14 | 0% | N=0 | 41% | N=141 | 100% | N=345 |
| Crime prevention | 20% | N=70 | 35% | N=121 | 12% | N=40 | 4% | N=13 | 29% | N=99 | 100% | N=344 |
| Fire prevention and education | 19% | N=64 | 32% | N=108 | 8% | N=26 | 1% | N=3 | 41% | N=140 | 100% | N=342 |
| Traffic enforcement | 17% | N=58 | 40% | N=137 | 17% | N=57 | 7% | N=24 | 19% | N=64 | 100% | N=340 |
| Street repair | 26% | N=88 | 43% | N=146 | 21% | N=73 | 1% | N=5 | 9% | N=30 | 100% | N=342 |
| Street cleaning | 36% | N=124 | 47% | N=162 | 12% | N=41 | 1% | N=2 | 4% | N=13 | 100% | N=342 |
| Street lighting | 37% | N=126 | 48% | N=167 | 12% | N=41 | 0% | N=1 | 2% | N=9 | 100% | N=344 |
| Sidewalk maintenance | 30% | N=101 | 49% | N=166 | 15% | N=49 | 1% | N=4 | 5% | N=18 | 100% | N=338 |
| Traffic signal timing | 20% | N=69 | 41% | N=139 | 26% | N=87 | 9% | N=31 | 4% | N=14 | 100% | N=339 |
| Bus or transit services | 23% | N=77 | 30% | N=103 | 8% | N=28 | 2% | N=8 | 36% | N=121 | 100% | N=338 |
| Garbage collection | 37% | N=128 | 48% | N=164 | 11% | N=36 | 1% | N=4 | 3% | N=11 | 100% | N=343 |
| Recycling | 38% | N=129 | 46% | N=160 | 13% | N=45 | 1% | N=4 | 2% | N=7 | 100% | N=344 |
| Yard waste pick-up | 31% | N=105 | 35% | N=120 | 8% | N=29 | 2% | N=8 | 23% | N=77 | 100% | N=340 |

The National Citizen Survey™

| Please rate the quality of each of the following services in Wilsonville: | Excellent | | Good | | Fair | | Poor | | Don't know | | Total | |
|--|-----------|-------|------|-------|------|------|------|------|------------|-------|-------|-------|
| Storm drainage | 22% | N=73 | 45% | N=151 | 13% | N=44 | 1% | N=3 | 20% | N=66 | 100% | N=337 |
| Drinking water | 37% | N=126 | 43% | N=148 | 14% | N=49 | 4% | N=14 | 2% | N=7 | 100% | N=343 |
| Sewer services | 31% | N=105 | 47% | N=160 | 6% | N=22 | 3% | N=11 | 13% | N=44 | 100% | N=342 |
| Power (electric and/or gas) utility | 38% | N=129 | 48% | N=164 | 9% | N=32 | 2% | N=6 | 3% | N=10 | 100% | N=342 |
| City of Wilsonville billing | 23% | N=77 | 40% | N=137 | 16% | N=54 | 4% | N=14 | 17% | N=59 | 100% | N=342 |
| City parks | 53% | N=180 | 38% | N=129 | 5% | N=16 | 1% | N=5 | 4% | N=13 | 100% | N=343 |
| Recreation programs or classes | 16% | N=54 | 35% | N=118 | 10% | N=34 | 3% | N=10 | 36% | N=124 | 100% | N=340 |
| Recreation centers or facilities | 19% | N=63 | 33% | N=111 | 13% | N=46 | 4% | N=12 | 32% | N=109 | 100% | N=340 |
| Land use, planning and zoning | 11% | N=35 | 28% | N=94 | 23% | N=78 | 9% | N=31 | 29% | N=98 | 100% | N=337 |
| Code enforcement (weeds, abandoned buildings, etc.) | 14% | N=46 | 30% | N=103 | 13% | N=44 | 4% | N=12 | 39% | N=134 | 100% | N=339 |
| Animal control | 12% | N=42 | 32% | N=108 | 11% | N=38 | 3% | N=11 | 41% | N=140 | 100% | N=340 |
| Economic development | 13% | N=42 | 35% | N=118 | 17% | N=58 | 7% | N=25 | 27% | N=90 | 100% | N=334 |
| Public library services | 52% | N=176 | 31% | N=105 | 5% | N=17 | 0% | N=0 | 12% | N=41 | 100% | N=338 |
| Public information services | 21% | N=70 | 38% | N=127 | 12% | N=41 | 2% | N=6 | 27% | N=91 | 100% | N=335 |
| Cable television | 12% | N=42 | 33% | N=112 | 22% | N=74 | 9% | N=30 | 24% | N=83 | 100% | N=341 |
| Emergency preparedness (services that prepare the community for natural disasters or other emergency situations) | 7% | N=23 | 17% | N=57 | 16% | N=54 | 6% | N=20 | 55% | N=188 | 100% | N=341 |
| Preservation of natural areas such as open space, farmlands and greenbelts | 25% | N=85 | 46% | N=154 | 14% | N=46 | 4% | N=14 | 11% | N=35 | 100% | N=334 |
| Wilsonville open space | 25% | N=85 | 47% | N=157 | 19% | N=62 | 1% | N=3 | 9% | N=29 | 100% | N=336 |
| City-sponsored special events | 17% | N=57 | 43% | N=143 | 12% | N=40 | 2% | N=6 | 25% | N=83 | 100% | N=329 |
| Overall customer service by Wilsonville employees (police, receptionists, planners, etc.) | 22% | N=71 | 46% | N=148 | 10% | N=33 | 5% | N=15 | 18% | N=57 | 100% | N=326 |

Table 42: Question 11

| Overall, how would you rate the quality of the services provided by each of the following? | Excellent | | Good | | Fair | | Poor | | Don't know | | Total | |
|--|-----------|-------|------|-------|------|------|------|------|------------|------|-------|-------|
| The City of Wilsonville | 30% | N=102 | 49% | N=169 | 10% | N=35 | 3% | N=10 | 7% | N=25 | 100% | N=341 |
| The Federal Government | 6% | N=19 | 31% | N=104 | 27% | N=92 | 21% | N=70 | 16% | N=55 | 100% | N=339 |

Table 43: Question 12

| Please rate the following categories of Wilsonville government performance: | Excellent | | Good | | Fair | | Poor | | Don't know | | Total | |
|---|-----------|------|------|-------|------|------|------|------|------------|-------|-------|-------|
| The value of services for the taxes paid to Wilsonville | 13% | N=45 | 41% | N=139 | 18% | N=61 | 7% | N=23 | 21% | N=73 | 100% | N=340 |
| The overall direction that Wilsonville is taking | 17% | N=58 | 44% | N=151 | 18% | N=60 | 11% | N=36 | 11% | N=38 | 100% | N=344 |
| The job Wilsonville government does at welcoming citizen involvement | 14% | N=49 | 34% | N=116 | 16% | N=55 | 7% | N=24 | 29% | N=99 | 100% | N=343 |
| Overall confidence in Wilsonville government | 17% | N=60 | 43% | N=146 | 17% | N=58 | 9% | N=31 | 14% | N=48 | 100% | N=344 |
| Generally acting in the best interest of the community | 18% | N=61 | 43% | N=148 | 17% | N=60 | 9% | N=33 | 12% | N=43 | 100% | N=345 |
| Being honest | 15% | N=52 | 34% | N=118 | 12% | N=41 | 6% | N=22 | 32% | N=109 | 100% | N=341 |
| Treating all residents fairly | 16% | N=56 | 32% | N=110 | 13% | N=45 | 7% | N=23 | 31% | N=107 | 100% | N=343 |

Table 44: Question 13

| Please rate how important, if at all, you think it is for the Wilsonville community to focus on each of the following in the coming two years: | Essential | | Very important | | Somewhat important | | Not at all important | | Total | |
|--|-----------|-------|----------------|-------|--------------------|------|----------------------|-----|-------|-------|
| Overall feeling of safety in Wilsonville | 61% | N=209 | 31% | N=107 | 7% | N=25 | 0% | N=0 | 100% | N=341 |
| Overall ease of getting to the places you usually have to visit | 33% | N=110 | 50% | N=168 | 17% | N=58 | 1% | N=2 | 100% | N=338 |

The National Citizen Survey™

| Please rate how important, if at all, you think it is for the Wilsonville community to focus on each of the following in the coming two years: | Essential | | Very important | | Somewhat important | | Not at all important | | Total | |
|--|-----------|-------|----------------|-------|--------------------|------|----------------------|------|-------|-------|
| | % | N | % | N | % | N | % | N | % | N |
| Quality of overall natural environment in Wilsonville | 45% | N=151 | 43% | N=145 | 13% | N=43 | 0% | N=0 | 100% | N=340 |
| Overall "built environment" of Wilsonville (including overall design, buildings, parks and transportation systems) | 36% | N=121 | 44% | N=149 | 19% | N=64 | 1% | N=2 | 100% | N=335 |
| Health and wellness opportunities in Wilsonville | 32% | N=110 | 40% | N=136 | 24% | N=81 | 4% | N=13 | 100% | N=339 |
| Overall opportunities for education and enrichment | 33% | N=110 | 40% | N=134 | 24% | N=81 | 3% | N=12 | 100% | N=336 |
| Overall economic health of Wilsonville | 46% | N=158 | 45% | N=154 | 9% | N=29 | 0% | N=0 | 100% | N=342 |
| Sense of community | 33% | N=113 | 46% | N=157 | 20% | N=67 | 1% | N=3 | 100% | N=340 |

Table 45: Question 14

| Please indicate whether each of the following is a major source, minor source, or not a source of information regarding Wilsonville City Government. | Major source | | Minor source | | Not a source | | Total | |
|--|--------------|-------|--------------|-------|--------------|-------|-------|-------|
| | % | N | % | N | % | N | % | N |
| Boones Ferry Messenger (City newsletter) | 48% | N=162 | 39% | N=130 | 13% | N=45 | 100% | N=337 |
| Wilsonville Spokesman | 40% | N=135 | 34% | N=113 | 26% | N=88 | 100% | N=336 |
| Oregonian | 21% | N=70 | 32% | N=106 | 47% | N=157 | 100% | N=334 |
| Local public access television | 12% | N=40 | 29% | N=98 | 59% | N=196 | 100% | N=334 |
| City of Wilsonville website (www.ci.wilsonville.or.us) | 31% | N=105 | 37% | N=122 | 32% | N=107 | 100% | N=334 |
| City's Facebook page | 10% | N=33 | 23% | N=76 | 67% | N=225 | 100% | N=333 |
| City's Twitter account | 5% | N=16 | 14% | N=48 | 81% | N=268 | 100% | N=332 |
| Oregon Live website's Wilsonville blog page | 9% | N=29 | 22% | N=72 | 69% | N=230 | 100% | N=331 |

Table 46: Question D1

| How often, if at all, do you do each of the following, considering all of the times you could? | Never | | Rarely | | Sometimes | | Usually | | Always | | Total | |
|--|-------|------|--------|------|-----------|-------|---------|-------|--------|-------|-------|-------|
| | % | N | % | N | % | N | % | N | % | N | % | N |
| Recycle at home | 0% | N=1 | 3% | N=8 | 3% | N=9 | 22% | N=74 | 72% | N=236 | 100% | N=329 |
| Purchase goods or services from a business located in Wilsonville | 0% | N=0 | 0% | N=0 | 13% | N=44 | 59% | N=193 | 28% | N=92 | 100% | N=329 |
| Eat at least 5 portions of fruits and vegetables a day | 1% | N=2 | 12% | N=38 | 35% | N=115 | 38% | N=123 | 15% | N=50 | 100% | N=328 |
| Participate in moderate or vigorous physical activity | 3% | N=8 | 7% | N=24 | 26% | N=86 | 36% | N=118 | 28% | N=92 | 100% | N=329 |
| Read or watch local news (via television, paper, computer, etc.) | 3% | N=9 | 12% | N=39 | 27% | N=87 | 25% | N=81 | 34% | N=113 | 100% | N=329 |
| Vote in local elections | 10% | N=32 | 8% | N=26 | 13% | N=41 | 21% | N=68 | 49% | N=161 | 100% | N=328 |

Table 47: Question D2

| Would you say that in general your health is: | Percent | Number |
|---|---------|--------|
| Excellent | 26% | N=85 |
| Very good | 43% | N=141 |
| Good | 25% | N=83 |
| Fair | 5% | N=15 |
| Poor | 1% | N=4 |
| Total | 100% | N=328 |

The National Citizen Survey™

Table 48: Question D3

| What impact, if any, do you think the economy will have on your family income in the next 6 months? Do you think the impact will be | Percent | Number |
|---|---------|--------|
| Very positive | 2% | N=5 |
| Somewhat positive | 28% | N=91 |
| Neutral | 48% | N=158 |
| Somewhat negative | 18% | N=60 |
| Very negative | 4% | N=14 |
| Total | 100% | N=328 |

Table 49: Question D4

| What is your employment status? | Percent | Number |
|---------------------------------------|---------|--------|
| Working full time for pay | 62% | N=205 |
| Working part time for pay | 8% | N=27 |
| Unemployed, looking for paid work | 6% | N=19 |
| Unemployed, not looking for paid work | 3% | N=9 |
| Fully retired | 21% | N=70 |
| Total | 100% | N=329 |

Table 50: Question D5

| Do you work inside the boundaries of Wilsonville? | Percent | Number |
|---|---------|--------|
| Yes, outside the home | 21% | N=66 |
| Yes, from home | 9% | N=26 |
| No | 70% | N=217 |
| Total | 100% | N=309 |

Table 51: Question D6

| How many years have you lived in Wilsonville? | Percent | Number |
|---|---------|--------|
| Less than 2 years | 21% | N=68 |
| 2 to 5 years | 29% | N=95 |
| 6 to 10 years | 16% | N=52 |
| 11 to 20 years | 22% | N=73 |
| More than 20 years | 12% | N=38 |
| Total | 100% | N=327 |

Table 52: Question D7

| Which best describes the building you live in? | Percent | Number |
|--|---------|--------|
| One family house detached from any other houses | 40% | N=131 |
| Building with two or more homes (duplex, townhome, apartment or condominium) | 58% | N=190 |
| Mobile home | 2% | N=6 |
| Other | 0% | N=1 |
| Total | 100% | N=327 |

The National Citizen Survey™

Table 53: Question D8

| Is this house, apartment or mobile home... | Percent | Number |
|--|---------|--------|
| Rented | 53% | N=171 |
| Owned | 47% | N=154 |
| Total | 100% | N=325 |

Table 54: Question D9

| About how much is your monthly housing cost for the place you live (including rent, mortgage payment, property tax, property insurance and homeowners' association (HOA) fees)? | Percent | Number |
|---|---------|--------|
| Less than \$300 per month | 4% | N=14 |
| \$300 to \$599 per month | 8% | N=25 |
| \$600 to \$999 per month | 26% | N=84 |
| \$1,000 to \$1,499 per month | 33% | N=106 |
| \$1,500 to \$2,499 per month | 19% | N=61 |
| \$2,500 or more per month | 9% | N=29 |
| Total | 100% | N=319 |

Table 55: Question D10

| Do any children 17 or under live in your household? | Percent | Number |
|---|---------|--------|
| No | 65% | N=211 |
| Yes | 35% | N=116 |
| Total | 100% | N=326 |

Table 56: Question D11

| Are you or any other members of your household aged 65 or older? | Percent | Number |
|--|---------|--------|
| No | 75% | N=248 |
| Yes | 25% | N=81 |
| Total | 100% | N=329 |

Table 57: Question D12

| How much do you anticipate your household's total income before taxes will be for the current year? (Please include in your total income money from all sources for all persons living in your household.) | Percent | Number |
|--|---------|--------|
| Less than \$25,000 | 11% | N=36 |
| \$25,000 to \$49,999 | 30% | N=94 |
| \$50,000 to \$99,999 | 30% | N=93 |
| \$100,000 to \$149,999 | 17% | N=53 |
| \$150,000 or more | 12% | N=38 |
| Total | 100% | N=314 |

Table 58: Question D13

| Are you Spanish, Hispanic or Latino? | Percent | Number |
|--|---------|--------|
| No, not Spanish, Hispanic or Latino | 93% | N=301 |
| Yes, I consider myself to be Spanish, Hispanic or Latino | 7% | N=23 |
| Total | 100% | N=324 |

The National Citizen Survey™

Table 59: Question D14

| What is your race? (Mark one or more races to indicate what race(s) you consider yourself to be.) | Percent | Number |
|---|---------|--------|
| American Indian or Alaskan Native | 3% | N=11 |
| Asian, Asian Indian or Pacific Islander | 5% | N=15 |
| Black or African American | 1% | N=2 |
| White | 92% | N=294 |
| Other | 4% | N=14 |

Total may exceed 100% as respondents could select more than one option.

Table 60: Question D15

| In which category is your age? | Percent | Number |
|--------------------------------|---------|--------|
| 18 to 24 years | 5% | N=18 |
| 25 to 34 years | 27% | N=89 |
| 35 to 44 years | 15% | N=49 |
| 45 to 54 years | 21% | N=69 |
| 55 to 64 years | 11% | N=37 |
| 65 to 74 years | 11% | N=37 |
| 75 years or older | 9% | N=28 |
| Total | 100% | N=327 |

Table 61: Question D16

| What is your sex? | Percent | Number |
|-------------------|---------|--------|
| Female | 55% | N=178 |
| Male | 45% | N=145 |
| Total | 100% | N=323 |

Table 62: Question D17

| Do you consider a cell phone or landline your primary telephone number? | Percent | Number |
|---|---------|--------|
| Cell | 66% | N=216 |
| Land line | 20% | N=67 |
| Both | 14% | N=46 |
| Total | 100% | N=329 |

Appendix B: Benchmark Comparisons

Comparison Data

NRC’s database of comparative resident opinion is comprised of resident perspectives gathered in surveys from over 500 communities whose residents evaluated the same kinds of topics on The National Citizen Survey™. The comparison evaluations are from the most recent survey completed in each community; most communities conduct surveys every year or in alternating years. NRC adds the latest results quickly upon survey completion, keeping the benchmark data fresh and relevant. The communities in the database represent a wide geographic and population range. The City of Wilsonville chose to have comparisons made to the entire database.

Interpreting the Results

Ratings are compared when there are at least five communities in which a similar question was asked. Where comparisons are available, four columns are provided in the table. The first column is Wilsonville’s “percent positive.” The percent positive is the combination of the top two most positive response options (i.e., “excellent” and “good,” “very safe” and “somewhat safe,” “essential” and “very important,” etc.), or, in the case of resident behaviors/participation, the percent positive represents the proportion of respondents indicating “yes” or participating in an activity at least once a month. The second column is the rank assigned to Wilsonville’s rating among communities where a similar question was asked. The third column is the number of communities that asked a similar question. The final column shows the comparison of Wilsonville’s rating to the benchmark.

In that final column, Wilsonville’s results are noted as being “higher” than the benchmark, “lower” than the benchmark or “similar” to the benchmark, meaning that the average rating given by Wilsonville residents is statistically similar to or different (greater or lesser) than the benchmark. More extreme differences are noted as “much higher” or “much lower.”

| Benchmark Database Characteristics | |
|------------------------------------|---------|
| Region | Percent |
| New England | 3% |
| Middle Atlantic | 5% |
| East North Central | 15% |
| West North Central | 13% |
| South Atlantic | 22% |
| East South Central | 3% |
| West South Central | 7% |
| Mountain | 16% |
| Pacific | 16% |
| Population | Percent |
| Less than 10,000 | 10% |
| 10,000 to 24,999 | 22% |
| 25,000 to 49,999 | 23% |
| 50,000 to 99,999 | 22% |
| 100,000 or more | 23% |

National Benchmark Comparisons

Table 63: Community Characteristics General

| | Percent positive | Rank | Number of communities in comparison | Comparison to benchmark |
|--|------------------|------|-------------------------------------|-------------------------|
| The overall quality of life in Wilsonville | 91% | 68 | 369 | Similar |
| Overall image or reputation of Wilsonville | 87% | 66 | 282 | Higher |
| Wilsonville as a place to live | 94% | 56 | 310 | Similar |
| Your neighborhood as a place to live | 91% | 36 | 248 | Similar |
| Wilsonville as a place to raise children | 93% | 42 | 308 | Higher |
| Wilsonville as a place to retire | 76% | 59 | 295 | Similar |
| Overall appearance of Wilsonville | 92% | 20 | 286 | Higher |

Table 64: Community Characteristics by Facet

| | | Percent positive | Rank | Number of communities in comparison | Comparison to benchmark | |
|----------------------------|--|--|------|-------------------------------------|-------------------------|---------|
| Safety | Overall feeling of safety in Wilsonville | 93% | 36 | 136 | Higher | |
| | In your neighborhood during the day | 98% | 24 | 284 | Similar | |
| | In Wilsonville's commercial areas during the day | 96% | 57 | 246 | Similar | |
| Mobility | Overall ease of getting to the places you usually have to visit | 86% | 7 | 55 | Similar | |
| | Availability of paths and walking trails | 83% | 17 | 224 | Higher | |
| | Ease of walking in Wilsonville | 81% | 20 | 239 | Higher | |
| | Ease of travel by bicycle in Wilsonville | 75% | 32 | 246 | Higher | |
| | Ease of travel by public transportation in Wilsonville | 75% | 12 | 77 | Higher | |
| | Ease of travel by car in Wilsonville | 74% | 45 | 243 | Similar | |
| | Traffic flow on major streets | 66% | 44 | 279 | Similar | |
| Natural Environment | Quality of overall natural environment in Wilsonville | 93% | 13 | 228 | Higher | |
| | Cleanliness of Wilsonville | 95% | 13 | 224 | Higher | |
| Built Environment | Overall "built environment" of Wilsonville (including overall design, buildings, parks and transportation systems) | 81% | 3 | 52 | Higher | |
| | Overall quality of new development in Wilsonville | 69% | 44 | 231 | Similar | |
| | Availability of affordable quality housing | 47% | 118 | 252 | Similar | |
| | Variety of housing options | 64% | 63 | 217 | Similar | |
| | Public places where people want to spend time | 84% | 7 | 50 | Higher | |
| Economy | Overall economic health of Wilsonville | 75% | 22 | 55 | Higher | |
| | Vibrant commercial areas | 62% | 16 | 49 | Higher | |
| | Overall quality of business and service establishments in Wilsonville | 74% | 56 | 215 | Similar | |
| | Cost of living in Wilsonville | 43% | 33 | 52 | Similar | |
| | Shopping opportunities | 54% | 126 | 238 | Similar | |
| | Employment opportunities | 51% | 31 | 255 | Higher | |
| | Wilsonville as a place to visit | 63% | 34 | 64 | Similar | |
| | Wilsonville as a place to work | 79% | 41 | 284 | Higher | |
| | Recreation and Wellness | Health and wellness opportunities in Wilsonville | 76% | 21 | 52 | Similar |
| | | Availability of affordable quality food | 67% | 45 | 179 | Similar |
| Recreational opportunities | | 73% | 81 | 248 | Similar | |
| Education and Enrichment | Fitness opportunities (including exercise classes and paths or trails, etc.) | 81% | 16 | 52 | Similar | |
| | Opportunities to participate in religious or spiritual events and activities | 75% | 101 | 174 | Similar | |
| | Opportunities to attend cultural/arts/music activities | 60% | 96 | 245 | Similar | |
| | Adult educational opportunities | 66% | 22 | 49 | Similar | |

The National Citizen Survey™

| | | Percent positive | Rank | Number of communities in comparison | Comparison to benchmark |
|----------------------|---|------------------|------|-------------------------------------|-------------------------|
| Community Engagement | K-12 education | 87% | 38 | 204 | Higher |
| | Availability of affordable quality child care/preschool | 59% | 49 | 213 | Similar |
| | Opportunities to participate in social events and activities | 71% | 70 | 205 | Similar |
| | Neighborliness of Wilsonville | 76% | 10 | 51 | Similar |
| | Openness and acceptance of the community toward people of diverse backgrounds | 68% | 57 | 237 | Similar |
| | Opportunities to participate in community matters | 77% | 44 | 213 | Similar |
| | Opportunities to volunteer | 76% | 107 | 217 | Similar |

Table 65: Governance General

| | Percent positive | Rank | Number of communities in comparison | Comparison to benchmark |
|---|------------------|------|-------------------------------------|-------------------------|
| Services provided by the City of Wilsonville | 86% | 51 | 344 | Similar |
| Overall customer service by Wilsonville employees (police, receptionists, planners, etc.) | 82% | 156 | 295 | Similar |
| Value of services for the taxes paid to Wilsonville | 69% | 51 | 327 | Similar |
| Overall direction that Wilsonville is taking | 68% | 72 | 269 | Similar |
| Job Wilsonville government does at welcoming citizen involvement | 68% | 31 | 250 | Higher |
| Overall confidence in Wilsonville government | 70% | 11 | 54 | Higher |
| Generally acting in the best interest of the community | 69% | 14 | 52 | Similar |
| Being honest | 73% | 10 | 52 | Higher |
| Treating all residents fairly | 71% | 10 | 52 | Higher |
| Services provided by the Federal Government | 43% | 89 | 206 | Similar |

Table 66: Governance by Facet

| | | Percent positive | Rank | Number of communities in comparison | Comparison to benchmark |
|---------------------|--|------------------|------|-------------------------------------|-------------------------|
| Safety | Police/Sheriff services | 82% | 150 | 345 | Similar |
| | Fire services | 94% | 57 | 291 | Similar |
| | Ambulance or emergency medical services | 93% | 64 | 275 | Similar |
| | Crime prevention | 78% | 73 | 283 | Similar |
| | Fire prevention and education | 86% | 67 | 239 | Similar |
| | Animal control | 75% | 50 | 264 | Similar |
| | Emergency preparedness (services that prepare the community for natural disasters or other emergency situations) | 52% | 177 | 238 | Similar |
| Mobility | Traffic enforcement | 71% | 117 | 307 | Similar |
| | Street repair | 75% | 10 | 352 | Much higher |
| | Street cleaning | 87% | 6 | 240 | Higher |
| | Street lighting | 87% | 2 | 265 | Much higher |
| | Sidewalk maintenance | 83% | 2 | 245 | Much higher |
| | Traffic signal timing | 64% | 18 | 208 | Similar |
| | Bus or transit services | 83% | 2 | 180 | Much higher |
| Natural Environment | Garbage collection | 88% | 91 | 283 | Similar |
| | Recycling | 86% | 89 | 294 | Similar |
| | Yard waste pick-up | 86% | 34 | 214 | Similar |
| | Drinking water | 82% | 49 | 266 | Higher |
| | Preservation of natural areas such as open space, farmlands and greenbelts | 80% | 24 | 215 | Higher |
| Built | Wilsonville open space | 79% | 14 | 63 | Similar |
| | Storm drainage | 82% | 14 | 292 | Higher |

The National Citizen Survey™

| | | Percent positive | Rank | Number of communities in comparison | Comparison to benchmark |
|--------------------------|---|------------------|------|-------------------------------------|-------------------------|
| Environment | Sewer services | 89% | 22 | 250 | Similar |
| | Power (electric and/or gas) utility | 88% | 6 | 125 | Similar |
| | City of Wilsonville utility billing | 76% | 15 | 55 | Similar |
| | Land use, planning and zoning | 54% | 77 | 241 | Similar |
| | Code enforcement (weeds, abandoned buildings, etc.) | 73% | 18 | 293 | Higher |
| | Cable television | 60% | 57 | 164 | Similar |
| Economy | Economic development | 66% | 43 | 231 | Higher |
| Recreation and Wellness | City parks | 94% | 17 | 263 | Higher |
| | Recreation programs or classes | 80% | 108 | 269 | Similar |
| | Recreation centers or facilities | 75% | 92 | 228 | Similar |
| Education and Enrichment | City-sponsored special events | 81% | 14 | 55 | Similar |
| | Public library services | 94% | 13 | 279 | Higher |
| Community Engagement | Public information services | 80% | 27 | 222 | Similar |

Table 67: Participation General

| | Percent positive | Rank | Number of communities in comparison | Comparison to benchmark |
|--|------------------|------|-------------------------------------|-------------------------|
| Sense of community | 72% | 68 | 250 | Similar |
| Recommend living in Wilsonville to someone who asks | 93% | 64 | 219 | Similar |
| Remain in Wilsonville for the next five years | 88% | 59 | 219 | Similar |
| Contacted Wilsonville (in-person, phone, email or web) for help or information | 35% | 226 | 247 | Lower |

Table 68: Participation by Facet

| | | Percent positive | Rank | Number of communities in comparison | Comparison to benchmark |
|-------------------------|--|------------------|------|-------------------------------------|-------------------------|
| Safety | Stocked supplies in preparation for an emergency | 34% | 27 | 49 | Similar |
| | Did NOT report a crime to the police | 81% | 24 | 51 | Similar |
| | Household member was NOT a victim of a crime | 91% | 66 | 223 | Similar |
| Mobility | Used bus, rail, subway or other public transportation instead of driving | 35% | 17 | 45 | Similar |
| | Carpooled with other adults or children instead of driving alone | 42% | 26 | 51 | Similar |
| | Walked or biked instead of driving | 77% | 7 | 51 | Higher |
| Natural Environment | Made efforts to conserve water | 88% | 12 | 50 | Similar |
| | Made efforts to make your home more energy efficient | 74% | 39 | 50 | Similar |
| | Recycle at home | 97% | 11 | 212 | Higher |
| Built Environment | Did NOT observe a code violation or other hazard in Wilsonville | 74% | 5 | 51 | Higher |
| | NOT experiencing housing costs stress | 66% | 109 | 208 | Similar |
| Economy | Purchase goods or services from a business located in Wilsonville | 100% | 1 | 50 | Similar |
| | Economy will have positive impact on income | 29% | 32 | 208 | Similar |
| | Work inside boundaries of Wilsonville | 30% | 41 | 50 | Lower |
| Recreation and Wellness | Used Wilsonville recreation centers or their services | 63% | 46 | 187 | Similar |
| | Visited a neighborhood park or City park | 91% | 48 | 217 | Similar |
| | Eat at least 5 portions of fruits and vegetables a day | 88% | 10 | 50 | Similar |

The National Citizen Survey™

| | | Percent positive | Rank | Number of communities in comparison | Comparison to benchmark |
|--------------------------|--|------------------|------|-------------------------------------|-------------------------|
| | Participate in moderate or vigorous physical activity | 90% | 4 | 50 | Similar |
| | In very good to excellent health | 69% | 22 | 50 | Similar |
| Education and Enrichment | Used Wilsonville public libraries or their services | 80% | 29 | 194 | Higher |
| | Participated in religious or spiritual activities in Wilsonville | 31% | 155 | 167 | Much lower |
| | Attended City-sponsored event | 52% | 24 | 50 | Similar |
| | Campaigned or advocated for an issue, cause or candidate | 16% | 47 | 50 | Similar |
| Community Engagement | Contacted Wilsonville elected officials (in-person, phone, email or web) to express your opinion | 9% | 49 | 50 | Similar |
| | Volunteered your time to some group/activity in Wilsonville | 34% | 155 | 216 | Similar |
| | Participated in a club | 20% | 163 | 191 | Lower |
| | Talked to or visited with your immediate neighbors | 88% | 36 | 50 | Similar |
| | Done a favor for a neighbor | 77% | 40 | 48 | Similar |
| | Attended a local public meeting | 20% | 146 | 218 | Similar |
| | Watched (online or on television) a local public meeting | 22% | 146 | 181 | Lower |
| | Read or watch local news (via television, paper, computer, etc.) | 85% | 38 | 50 | Similar |
| | Vote in local elections | 82% | 66 | 208 | Similar |

Communities included in national comparisons

The communities included in Wilsonville’s comparisons are listed on the following pages along with their population according to the 2010 Census.

| | | | |
|---------------------------------|---------|--------------------------------|---------|
| Abilene city, KS..... | 6,844 | Baytown city, TX..... | 71,802 |
| Adams County, CO..... | 441,603 | Bedford town, MA..... | 13,320 |
| Airway Heights city, WA..... | 6,114 | Bellevue city, WA..... | 122,363 |
| Albany city, OR..... | 50,158 | Beltrami County, MN..... | 44,442 |
| Albemarle County, VA..... | 98,970 | Benbrook city, TX..... | 21,234 |
| Albert Lea city, MN..... | 18,016 | Benicia city, CA..... | 26,997 |
| Altoona city, IA..... | 14,541 | Bettendorf city, IA..... | 33,217 |
| Ames city, IA..... | 58,965 | Billings city, MT..... | 104,170 |
| Andover CDP, MA..... | 8,762 | Blaine city, MN..... | 57,186 |
| Ankeny city, IA..... | 45,582 | Bloomfield Hills city, MI..... | 3,869 |
| Ann Arbor city, MI..... | 113,934 | Bloomington city, IL..... | 76,610 |
| Annapolis city, MD..... | 38,394 | Bloomington city, MN..... | 82,893 |
| Apple Valley town, CA..... | 69,135 | Blue Springs city, MO..... | 52,575 |
| Arlington city, TX..... | 365,438 | Boise City city, ID..... | 205,671 |
| Arlington County, VA..... | 207,627 | Boonville city, MO..... | 8,319 |
| Arvada city, CO..... | 106,433 | Boulder city, CO..... | 97,385 |
| Ashland city, OR..... | 20,078 | Boulder County, CO..... | 294,567 |
| Ashland town, VA..... | 7,225 | Bowling Green city, KY..... | 58,067 |
| Aspen city, CO..... | 6,658 | Bristol city, TN..... | 26,702 |
| Auburn city, AL..... | 53,380 | Broken Arrow city, OK..... | 98,850 |
| Auburn city, WA..... | 70,180 | Brookfield city, WI..... | 37,920 |
| Aurora city, CO..... | 325,078 | Brookline CDP, MA..... | 58,732 |
| Austin city, TX..... | 790,390 | Brookline town, NH..... | 4,991 |
| Bainbridge Island city, WA..... | 23,025 | Broomfield city, CO..... | 55,889 |
| Baltimore city, MD..... | 620,961 | Brownsburg town, IN..... | 21,285 |
| Baltimore County, MD..... | 805,029 | Bryan city, TX..... | 76,201 |
| Battle Creek city, MI..... | 52,347 | Burleson city, TX..... | 36,690 |
| Bay City city, MI..... | 34,932 | Cabarrus County, NC..... | 178,011 |

The National Citizen Survey™

| | | | |
|----------------------------------|-----------|---------------------------------|---------|
| Cambridge city, MA..... | 105,162 | Eau Claire city, WI..... | 65,883 |
| Canton city, SD..... | 3,057 | Eden Prairie city, MN..... | 60,797 |
| Cape Coral city, FL..... | 154,305 | Edgerton city, KS..... | 1,671 |
| Cape Girardeau city, MO..... | 37,941 | Edina city, MN..... | 47,941 |
| Carlisle borough, PA..... | 18,682 | Edmonds city, WA..... | 39,709 |
| Carlsbad city, CA..... | 105,328 | El Cerrito city, CA..... | 23,549 |
| Cartersville city, GA..... | 19,731 | El Paso city, TX..... | 649,121 |
| Cary town, NC..... | 135,234 | Elk Grove city, CA..... | 153,015 |
| Casa Grande city, AZ..... | 48,571 | Elk River city, MN..... | 22,974 |
| Casper city, WY..... | 55,316 | Elko New Market city, MN..... | 4,110 |
| Castle Pines North city, CO..... | 10,360 | Elmhurst city, IL..... | 44,121 |
| Castle Rock town, CO..... | 48,231 | Encinitas city, CA..... | 59,518 |
| Cedar Falls city, IA..... | 39,260 | Englewood city, CO..... | 30,255 |
| Cedar Rapids city, IA..... | 126,326 | Erie town, CO..... | 18,135 |
| Centennial city, CO..... | 100,377 | Escambia County, FL..... | 297,619 |
| Centralia city, IL..... | 13,032 | Estes Park town, CO..... | 5,858 |
| Chambersburg borough, PA..... | 20,268 | Farmington Hills city, MI..... | 79,740 |
| Chandler city, AZ..... | 236,123 | Fayetteville city, NC..... | 200,564 |
| Chanhassen city, MN..... | 22,952 | Fishers town, IN..... | 76,794 |
| Chapel Hill town, NC..... | 57,233 | Flagstaff city, AZ..... | 65,870 |
| Charlotte city, NC..... | 731,424 | Flower Mound town, TX..... | 64,669 |
| Charlotte County, FL..... | 159,978 | Flushing city, MI..... | 8,389 |
| Charlottesville city, VA..... | 43,475 | Forest Grove city, OR..... | 21,083 |
| Chesterfield County, VA..... | 316,236 | Fort Collins city, CO..... | 143,986 |
| Chippewa Falls city, WI..... | 13,661 | Fort Smith city, AR..... | 86,209 |
| Citrus Heights city, CA..... | 83,301 | Fort Worth city, TX..... | 741,206 |
| Clayton city, MO..... | 15,939 | Fountain Hills town, AZ..... | 22,489 |
| Clive city, IA..... | 15,447 | Franklin city, TN..... | 62,487 |
| Clovis city, CA..... | 95,631 | Fredericksburg city, VA..... | 24,286 |
| College Park city, MD..... | 30,413 | Freeport CDP, ME..... | 1,485 |
| College Station city, TX..... | 93,857 | Freeport city, IL..... | 25,638 |
| Colleyville city, TX..... | 22,807 | Fremont city, CA..... | 214,089 |
| Collinsville city, IL..... | 25,579 | Friendswood city, TX..... | 35,805 |
| Columbia city, MO..... | 108,500 | Fruita city, CO..... | 12,646 |
| Columbus city, WI..... | 4,991 | Gainesville city, FL..... | 124,354 |
| Commerce City city, CO..... | 45,913 | Gaithersburg city, MD..... | 59,933 |
| Concord city, CA..... | 122,067 | Galveston city, TX..... | 47,743 |
| Concord town, MA..... | 17,668 | Garden City city, KS..... | 26,658 |
| Conyers city, GA..... | 15,195 | Gardner city, KS..... | 19,123 |
| Cookeville city, TN..... | 30,435 | Geneva city, NY..... | 13,261 |
| Coon Rapids city, MN..... | 61,476 | Georgetown city, TX..... | 47,400 |
| Cooper City city, FL..... | 28,547 | Gilbert town, AZ..... | 208,453 |
| Coronado city, CA..... | 18,912 | Gillette city, WY..... | 29,087 |
| Corvallis city, OR..... | 54,462 | Globe city, AZ..... | 7,532 |
| Cross Roads town, TX..... | 1,563 | Goodyear city, AZ..... | 65,275 |
| Crystal Lake city, IL..... | 40,743 | Grafton village, WI..... | 11,459 |
| Dade City city, FL..... | 6,437 | Grand Island city, NE..... | 48,520 |
| Dakota County, MN..... | 398,552 | Greeley city, CO..... | 92,889 |
| Dallas city, OR..... | 14,583 | Green Valley CDP, AZ..... | 21,391 |
| Dallas city, TX..... | 1,197,816 | Greenwood Village city, CO..... | 13,925 |
| Davenport city, IA..... | 99,685 | Greer city, SC..... | 25,515 |
| Davidson town, NC..... | 10,944 | Gunnison County, CO..... | 15,324 |
| Decatur city, GA..... | 19,335 | Hailey city, ID..... | 7,960 |
| Delray Beach city, FL..... | 60,522 | Haines Borough, AK..... | 2,508 |
| Denison city, TX..... | 22,682 | Hallandale Beach city, FL..... | 37,113 |
| Denver city, CO..... | 600,158 | Hamilton city, OH..... | 62,477 |
| Derby city, KS..... | 22,158 | Hampton city, VA..... | 137,436 |
| Des Moines city, IA..... | 203,433 | Hanover County, VA..... | 99,863 |
| Destin city, FL..... | 12,305 | Harrisonburg city, VA..... | 48,914 |
| Dewey-Humboldt town, AZ..... | 3,894 | Harrisonville city, MO..... | 10,019 |
| Dorchester County, MD..... | 32,618 | Hayward city, CA..... | 144,186 |
| Dothan city, AL..... | 65,496 | Henderson city, NV..... | 257,729 |
| Douglas County, CO..... | 285,465 | Hermiston city, OR..... | 16,745 |
| Dover city, NH..... | 29,987 | High Point city, NC..... | 104,371 |
| Dublin city, OH..... | 41,751 | Highland Park city, IL..... | 29,763 |
| Duluth city, MN..... | 86,265 | Highlands Ranch CDP, CO..... | 96,713 |
| Duncanville city, TX..... | 38,524 | Hillsborough town, NC..... | 6,087 |
| Durham city, NC..... | 228,330 | Holden town, MA..... | 17,346 |
| East Grand Forks city, MN..... | 8,601 | Holland city, MI..... | 33,051 |
| East Lansing city, MI..... | 48,579 | Honolulu County, HI..... | 953,207 |

The National Citizen Survey™

| | | | |
|---------------------------------|-----------|-------------------------------------|---------|
| Hooksett town, NH..... | 13,451 | Menlo Park city, CA | 32,026 |
| Hopkins city, MN..... | 17,591 | Meridian charter township, MI | 39,688 |
| Hopkinton town, MA..... | 14,925 | Meridian city, ID | 75,092 |
| Hoquiam city, WA | 8,726 | Merriam city, KS..... | 11,003 |
| Houston city, TX | 2,099,451 | Merrill city, WI | 9,661 |
| Hudson city, OH..... | 22,262 | Mesa city, AZ | 439,041 |
| Hudson town, CO..... | 2,356 | Mesa County, CO | 146,723 |
| Hudsonville city, MI..... | 7,116 | Miami Beach city, FL | 87,779 |
| Huntersville town, NC..... | 46,773 | Miami city, FL | 399,457 |
| Hurst city, TX..... | 37,337 | Midland city, MI | 41,863 |
| Hutchinson city, MN | 14,178 | Milford city, DE | 9,559 |
| Hutto city, TX | 14,698 | Milton city, GA | 32,661 |
| Hyattsville city, MD | 17,557 | Minneapolis city, MN | 382,578 |
| Indian Trail town, NC | 33,518 | Mission Viejo city, CA | 93,305 |
| Indianola city, IA | 14,782 | Modesto city, CA..... | 201,165 |
| Iowa City city, IA | 67,862 | Monterey city, CA..... | 27,810 |
| Jackson County, MI..... | 160,248 | Montgomery County, MD..... | 971,777 |
| Jefferson City city, MO | 43,079 | Montgomery County, VA..... | 94,392 |
| Jefferson County, CO | 534,543 | Montpelier city, VT | 7,855 |
| Jerome city, ID | 10,890 | Mooreville town, NC..... | 32,711 |
| Johnson City city, TN..... | 63,152 | Morristown city, TN..... | 29,137 |
| Johnson County, KS | 544,179 | Moscow city, ID | 23,800 |
| Jupiter town, FL..... | 55,156 | Mountlake Terrace city, WA | 19,909 |
| Kalamazoo city, MI..... | 74,262 | Munster town, IN..... | 23,603 |
| Kansas City city, MO..... | 459,787 | Muscataine city, IA | 22,886 |
| Kenmore city, WA | 20,460 | Naperville city, IL | 141,853 |
| Kennett Square borough, PA..... | 6,072 | Needham CDP, MA..... | 28,886 |
| Kirkland city, WA..... | 48,787 | New Braunfels city, TX | 57,740 |
| La Mesa city, CA | 57,065 | New Brighton city, MN..... | 21,456 |
| La Plata town, MD..... | 8,753 | New Orleans city, LA | 343,829 |
| La Porte city, TX..... | 33,800 | Newport Beach city, CA | 85,186 |
| La Vista city, NE..... | 15,758 | Newport city, RI..... | 24,672 |
| Lafayette city, CO | 24,453 | Newport News city, VA..... | 180,719 |
| Laguna Beach city, CA..... | 22,723 | Newton city, IA..... | 15,254 |
| Laguna Hills city, CA..... | 30,344 | Noblesville city, IN | 51,969 |
| Lake Oswego city, OR | 36,619 | Nogales city, AZ..... | 20,837 |
| Lake Zurich village, IL | 19,631 | Norfolk city, VA..... | 242,803 |
| Lakeville city, MN | 55,954 | Norman city, OK | 110,925 |
| Lakewood city, CO | 142,980 | North Las Vegas city, NV | 216,961 |
| Lane County, OR..... | 351,715 | Northglenn city, CO..... | 35,789 |
| Larimer County, CO..... | 299,630 | Novato city, CA | 51,904 |
| Las Cruces city, NM..... | 97,618 | Novi city, MI | 55,224 |
| Las Vegas city, NV | 583,756 | O'Fallon city, IL..... | 28,281 |
| Lawrence city, KS..... | 87,643 | Oak Park village, IL | 51,878 |
| League City city, TX | 83,560 | Oakland Park city, FL | 41,363 |
| Lee County, FL..... | 618,754 | Ogdensburg city, NY | 11,128 |
| Lewiston city, ME..... | 36,592 | Oklahoma City city, OK..... | 579,999 |
| Lincoln city, NE | 258,379 | Olathe city, KS | 125,872 |
| Lindsborg city, KS | 3,458 | Olmsted County, MN | 144,248 |
| Littleton city, CO | 41,737 | Orland Park village, IL | 56,767 |
| Livermore city, CA..... | 80,968 | Oshkosh city, WI..... | 66,083 |
| Lone Tree city, CO | 10,218 | Otsego County, MI..... | 24,164 |
| Longmont city, CO | 86,270 | Oviedo city, FL..... | 33,342 |
| Los Alamos County, NM..... | 17,950 | Paducah city, KY | 25,024 |
| Louisville city, CO..... | 18,376 | Palm Coast city, FL..... | 75,180 |
| Lynchburg city, VA | 75,568 | Palm Springs city, CA | 44,552 |
| Lynnwood city, WA | 35,836 | Palo Alto city, CA | 64,403 |
| Madison city, WI | 233,209 | Panama City city, FL..... | 36,484 |
| Mankato city, MN | 39,309 | Papillion city, NE | 18,894 |
| Maple Grove city, MN | 61,567 | Park City city, UT | 7,558 |
| Maple Valley city, WA | 22,684 | Parker town, CO | 45,297 |
| Maricopa County, AZ | 3,817,117 | Pasadena city, CA | 137,122 |
| Marin County, CA | 252,409 | Pasco city, WA..... | 59,781 |
| Maryland Heights city, MO..... | 27,472 | Pasco County, FL | 464,697 |
| McAllen city, TX | 129,877 | Peachtree City city, GA | 34,364 |
| McDonough city, GA..... | 22,084 | Pearland city, TX..... | 91,252 |
| McKinney city, TX..... | 131,117 | Peoria city, AZ | 154,065 |
| McMinnville city, OR | 32,187 | Peoria city, IL | 115,007 |
| Mecklenburg County, NC | 919,628 | Peoria County, IL | 186,494 |
| Medford city, OR..... | 74,907 | Peters township, PA | 21,213 |

The National Citizen Survey™

| | | | |
|--------------------------------|-----------|---------------------------------|---------|
| Petoskey city, MI | 5,670 | SeaTac city, WA..... | 26,909 |
| Pflugerville city, TX | 46,936 | Sevierville city, TN | 14,807 |
| Phoenix city, AZ | 1,445,632 | Shawnee city, KS | 62,209 |
| Pinal County, AZ | 375,770 | Sheboygan city, WI..... | 49,288 |
| Pinehurst village, NC | 13,124 | Shorewood city, MN | 7,307 |
| Piqua city, OH..... | 20,522 | Sioux Falls city, SD..... | 153,888 |
| Platte City city, MO..... | 4,691 | Skokie village, IL..... | 64,784 |
| Plymouth city, MN..... | 70,576 | Snellville city, GA | 18,242 |
| Pocatello city, ID..... | 54,255 | South Lake Tahoe city, CA..... | 21,403 |
| Polk County, IA..... | 430,640 | South Portland city, ME | 25,002 |
| Port Huron city, MI..... | 30,184 | Southborough town, MA..... | 9,767 |
| Port Orange city, FL | 56,048 | Southlake city, TX..... | 26,575 |
| Port St. Lucie city, FL | 164,603 | Sparks city, NV | 90,264 |
| Portland city, OR..... | 583,776 | Spokane Valley city, WA | 89,755 |
| Post Falls city, ID | 27,574 | Springboro city, OH..... | 17,409 |
| Prince William County, VA..... | 402,002 | Springfield city, OR | 59,403 |
| Provo city, UT | 112,488 | Springville city, UT | 29,466 |
| Pueblo city, CO | 106,595 | St. Charles city, IL..... | 32,974 |
| Purcellville town, VA..... | 7,727 | St. Cloud city, MN | 65,842 |
| Queen Creek town, AZ | 26,361 | St. Joseph city, MO | 76,780 |
| Radford city, VA..... | 16,408 | St. Louis County, MN..... | 200,226 |
| Radnor township, PA..... | 31,531 | St. Louis Park city, MN | 45,250 |
| Rapid City city, SD | 67,956 | Stallings town, NC..... | 13,831 |
| Raymore city, MO | 19,206 | State College borough, PA | 42,034 |
| Redmond city, WA | 54,144 | Sterling Heights city, MI | 129,699 |
| Rehoboth Beach city, DE | 1,327 | Sugar Grove village, IL | 8,997 |
| Reno city, NV..... | 225,221 | Sugar Land city, TX..... | 78,817 |
| Reston CDP, VA | 58,404 | Summit city, NJ..... | 21,457 |
| Richmond city, CA..... | 103,701 | Sunnyvale city, CA | 140,081 |
| Richmond Heights city, MO..... | 8,603 | Surprise city, AZ..... | 117,517 |
| Rifle city, CO..... | 9,172 | Suwanee city, GA..... | 15,355 |
| River Falls city, WI | 15,000 | Tacoma city, WA..... | 198,397 |
| Riverdale city, UT..... | 8,426 | Takoma Park city, MD | 16,715 |
| Riverside city, CA | 303,871 | Temecula city, CA | 100,097 |
| Riverside city, MO | 2,937 | Tempe city, AZ | 161,719 |
| Rochester city, MI..... | 12,711 | Temple city, TX..... | 66,102 |
| Rochester Hills city, MI..... | 70,995 | The Woodlands CDP, TX..... | 93,847 |
| Rock Hill city, SC..... | 66,154 | Thornton city, CO..... | 118,772 |
| Rockford city, IL | 152,871 | Thousand Oaks city, CA..... | 126,683 |
| Rockville city, MD..... | 61,209 | Tualatin city, OR | 26,054 |
| Rolla city, MO | 19,559 | Tulsa city, OK | 391,906 |
| Roswell city, GA..... | 88,346 | Twin Falls city, ID | 44,125 |
| Round Rock city, TX..... | 99,887 | Tyler city, TX | 96,900 |
| Royal Oak city, MI..... | 57,236 | Umatilla city, OR | 6,906 |
| Saco city, ME..... | 18,482 | Upper Arlington city, OH..... | 33,771 |
| Sahuarita town, AZ | 25,259 | Urbandale city, IA | 39,463 |
| Salida city, CO | 5,236 | Vail town, CO..... | 5,305 |
| Salt Lake City city, UT | 186,440 | Vancouver city, WA | 161,791 |
| Sammamish city, WA | 45,780 | Ventura CCD, CA..... | 111,889 |
| San Antonio city, TX..... | 1,327,407 | Vestavia Hills city, AL | 34,033 |
| San Carlos city, CA | 28,406 | Virginia Beach city, VA..... | 437,994 |
| San Diego city, CA | 1,307,402 | Wake Forest town, NC..... | 30,117 |
| San Francisco city, CA | 805,235 | Walnut Creek city, CA..... | 64,173 |
| San Jose city, CA | 945,942 | Washington County, MN | 238,136 |
| San Juan County, NM..... | 130,044 | Washoe County, NV | 421,407 |
| San Marcos city, TX..... | 44,894 | Watauga city, TX | 23,497 |
| San Rafael city, CA..... | 57,713 | Wauwatosa city, WI | 46,396 |
| Sandy Springs city, GA | 93,853 | Waverly city, IA | 9,874 |
| Sanford city, FL..... | 53,570 | Weddington town, NC | 9,459 |
| Sangamon County, IL..... | 197,465 | Wentzville city, MO..... | 29,070 |
| Santa Clarita city, CA..... | 176,320 | West Carrollton city, OH | 13,143 |
| Santa Fe County, NM | 144,170 | West Chester borough, PA..... | 18,461 |
| Santa Monica city, CA..... | 89,736 | West Des Moines city, IA..... | 56,609 |
| Sarasota County, FL..... | 379,448 | West Richland city, WA..... | 11,811 |
| Savage city, MN..... | 26,911 | Westerville city, OH..... | 36,120 |
| Savannah city, GA..... | 136,286 | Westlake town, TX..... | 992 |
| Scarborough CDP, ME | 4,403 | Westminster city, CO..... | 106,114 |
| Scott County, MN..... | 129,928 | Weston town, MA..... | 11,261 |
| Scottsdale city, AZ | 217,385 | Wheat Ridge city, CO | 30,166 |
| Seaside city, CA | 33,025 | White House city, TN | 10,255 |

The National Citizen Survey™

| | | | |
|------------------------------|---------|-----------------------------|--------|
| Whitewater township, MI..... | 2,597 | Winter Garden city, FL..... | 34,568 |
| Wichita city, KS..... | 382,368 | Woodland city, CA..... | 55,468 |
| Williamsburg city, VA..... | 14,068 | Woodland city, WA..... | 5,509 |
| Wilmington city, NC..... | 106,476 | Wrentham town, MA..... | 10,955 |
| Wilsonville city, OR..... | 19,509 | Yakima city, WA..... | 91,067 |
| Winchester city, VA..... | 26,203 | York County, VA..... | 65,464 |
| Windsor town, CO..... | 18,644 | Yuma city, AZ..... | 93,064 |
| Windsor town, CT..... | 29,044 | | |
| Winston-Salem city, NC..... | 229,617 | | |

Appendix C: Detailed Survey Methods

The National Citizen Survey (The NCS™) was developed to provide communities an accurate, affordable and easy way to assess and interpret resident opinion about important local topics. Standardization of common questions and survey methods provide the rigor to assure valid results, and each community has enough flexibility to construct a customized version of The NCS.

Results offer insight into residents' perspectives about the community as a whole, including local amenities, services, public trust, resident participation and other aspects of the community in order to support budgeting, land use and strategic planning and communication with residents. Resident demographic characteristics permit comparison to the Census as well as comparison of results for different subgroups of residents.

Survey Validity

The question of survey validity has two parts: 1) how can a community be confident that the results from those who completed the questionnaire are representative of the results that would have been obtained had the survey been administered to the entire population? and 2) how closely do the perspectives recorded on the survey reflect what residents really believe or do?

To answer the first question, the best survey research practices were used for the resources spent to ensure that the results from the survey respondents reflect the opinions of residents in the entire community. These practices include:

- Using a mail-out/mail-back methodology, which typically gets a higher response rate than phone for the same dollars spent. A higher response rate lessens the worry that those who did not respond are different than those who did respond.
- Selecting households at random within the community to receive the survey to ensure that the households selected to receive the survey are representative of the larger community.
- Over-sampling multi-family housing units to improve response from hard-to-reach, lower income or younger apartment dwellers.
- Selecting the respondent within the household using an unbiased sampling procedure; in this case, the "birthday method." The cover letter included an instruction requesting that the respondent in the household be the adult (18 years old or older) who most recently had a birthday, irrespective of year of birth.
- Contacting potential respondents three times to encourage response from people who may have different opinions or habits than those who would respond with only a single prompt.
- Inviting response in a compelling manner (using appropriate letterhead/logos and a signature of a visible leader) to appeal to recipients' sense of civic responsibility.
- Providing a pre-addressed, postage-paid return envelope.
- Offering the survey in Spanish or other language when requested by a given community.
- Weighting the results to reflect the demographics of the population.

The answer to the second question about how closely the perspectives recorded on the survey reflect what residents really believe or do is more complex. Resident responses to surveys are influenced by a variety of factors. For questions about service quality, residents' expectations for service quality play a role as well as the "objective" quality of the service provided, the way the resident perceives the entire community (that is, the context in which the service is provided), the scale on which the resident is asked to record his or her opinion and, of course, the opinion, itself, that a resident holds about the service. Similarly a resident's report of certain behaviors is colored by what he or she believes is the socially desirable response (e.g., reporting tolerant behaviors toward "oppressed groups," likelihood of voting for a tax increase for services to poor people, use of alternative modes of travel to work besides the single occupancy vehicle), his or her memory of the actual behavior (if it is not a question speculating about future actions, like a vote), his or her confidence that he or she can be honest without suffering any negative consequences (thus the need for anonymity) as well as the actual behavior itself.

How closely survey results come to recording the way a person really feels or behaves often is measured by the coincidence of reported behavior with observed current behavior (e.g., driving habits), reported intentions to behave with observed future behavior (e.g., voting choices) or reported opinions about current community quality with objective characteristics of the community (e.g., feelings of safety correlated with rates of crime). There is a

body of scientific literature that has investigated the relationship between reported behaviors and actual behaviors. Well-conducted surveys, by and large, do capture true respondent behaviors or intentions to act with great accuracy. Predictions of voting outcomes tend to be quite accurate using survey research, as do reported behaviors that are not about highly sensitive issues (e.g., family abuse or other illegal or morally sanctioned activities). For self-reports about highly sensitive issues, statistical adjustments can be made to correct for the respondents' tendency to report what they think the "correct" response should be.

Research on the correlation of resident opinion about service quality and "objective" ratings of service quality vary, with some showing stronger relationships than others. NRC's own research has demonstrated that residents who report the lowest ratings of street repair live in communities with objectively worse street conditions than those who report high ratings of street repair (based on road quality, delay in street repair, number of road repair employees). Similarly, the lowest rated fire services appear to be "objectively" worse than the highest rated fire services (expenditures per capita, response time, "professional" status of firefighters, breadth of services and training provided). Resident opinion commonly reflects objective performance data but is an important measure on its own. NRC principals have written, "If you collect trash three times a day but residents think that your trash haul is lousy, you still have a problem."

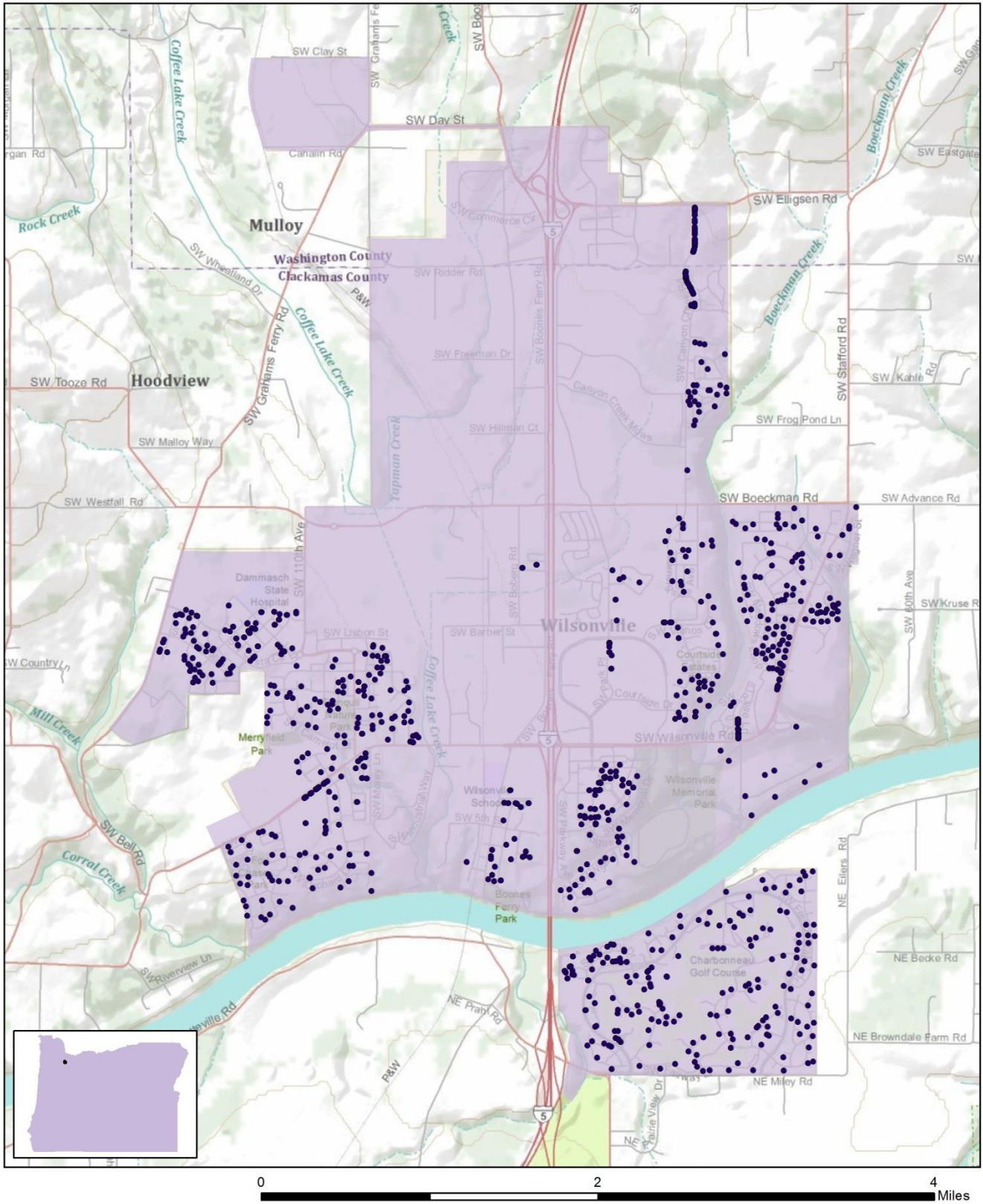
Survey Sampling

"Sampling" refers to the method by which households were chosen to receive the survey. All households within the City of Wilsonville were eligible to participate in the survey. A list of all households was represented by a United States Postal Service listing of housing units within the zip codes serving Wilsonville. Since some of the zip codes that serve the City of Wilsonville households may also serve addresses that lie outside of the community, the exact geographic location of each housing unit was compared to community boundaries using the most current municipal boundary file (updated on a quarterly basis) and addresses located outside of the City of Wilsonville boundaries were removed from consideration.

To choose the 1,200 survey recipients, a systematic sampling method was applied to the list of households previously screened for geographic location. Systematic sampling is a procedure whereby a complete list of all possible items is culled, selecting every *Nth* one until the appropriate amount of items is selected. Multi-family housing units were over sampled as residents of this type of housing typically respond at lower rates to surveys than do those in single-family housing units. Figure 1 displays a map of the households selected to receive the survey. In general, because of the random sampling techniques used, the displayed sampling density will closely mirror the overall housing unit density (which may be different from the population density). While the theory of probability assumes no bias in selection, there may be some minor variations in practice (meaning, an area with only 15% of the housing units might be sampled at an actual rate that is slightly above or below that).

An individual within each household was selected using the birthday method. The birthday method selects a person within the household by asking the "person whose birthday has most recently passed" to complete the questionnaire. The underlying assumption in this method is that day of birth has no relationship to the way people respond to surveys. This instruction was contained in the cover letter accompanying the questionnaire.

Figure 1: Location of Survey Recipients



Survey Recipients in Wilsonville, OR

- Survey Recipients



Survey Administration and Response

Selected households received three mailings, one week apart, beginning in May 2014. The first mailing was a prenotification postcard announcing the upcoming survey. The next mailing contained a letter from the Mayor inviting the household to participate, a questionnaire and a postage-paid return envelope. The final mailing contained a reminder letter, another survey and a postage-paid return envelope. The second cover letter asked those who had not completed the survey to do so and those who had already done so to refrain from turning in another survey. Respondents could opt to take the survey online if they preferred. Completed surveys were collected over the following six weeks.

About 4% of the 1,200 surveys mailed were returned because the housing unit was vacant or the postal service was unable to deliver the survey as addressed. Of the remaining 1,154 households that received the survey, 351 completed the survey, providing an overall response rate of 30%; average response rates for a mailed resident survey range from 25% to 40%. Of the 351 completed surveys 17 were completed online.

Confidence Intervals

It is customary to describe the precision of estimates made from surveys by a “level of confidence” and accompanying “confidence interval” (or margin of error). A traditional level of confidence, and the one used here, is 95%. The 95% confidence interval can be any size and quantifies the sampling error or imprecision of the survey results because some residents’ opinions are relied on to estimate all residents’ opinions.¹

The margin of error for the City of Wilsonville survey is no greater than plus or minus five percentage points around any given percent reported for the entire sample (351 completed surveys).

For subgroups of responses, the margin of error increases because the sample size for the subgroup is smaller. For subgroups of approximately 100 respondents, the margin of error is plus or minus 10 percentage points.

Survey Processing (Data Entry)

Upon receipt, completed surveys were assigned a unique identification number. Additionally, each survey was reviewed and “cleaned” as necessary. For example, a question may have asked a respondent to pick two items out of a list of five, but the respondent checked three; in this case, NRC would use protocols to randomly choose two of the three selected items for inclusion in the dataset.

All surveys then were entered twice into an electronic dataset; any discrepancies were resolved in comparison to the original survey form. Range checks as well as other forms of quality control were also performed.

Survey Data Weighting

The demographic characteristics of the survey sample were compared to those found in the 2010 Census and American Community Survey estimates for adults in the City of Wilsonville. The primary objective of weighting survey data is to make the survey sample reflective of the larger population of the community. The characteristics used for weighting were housing tenure, housing unit type, race and ethnicity and sex and age. The results of the weighting scheme are presented in the following table.

¹ A 95% confidence interval indicates that for every 100 random samples of this many residents, 95 of the confidence intervals created will include the “true” population response. This theory is applied in practice to mean that the “true” perspective of the target population lies within the confidence interval created for a single survey. For example, if 75% of residents rate a service as “excellent” or “good,” then the 4% margin of error (for the 95% confidence interval) indicates that the range of likely responses for the entire community is between 71% and 79%. This source of uncertainty is called sampling error. In addition to sampling error, other sources of error may affect any survey, including the non-response of residents with opinions different from survey responders. Though standardized on The NCS, on other surveys, differences in question wording, order, translation and data entry, as examples, can lead to somewhat varying results.

Table 69: Wilsonville, OR 2014 Weighting Table

| Characteristic | Population Norm | Unweighted Data | Weighted Data |
|---------------------------|-----------------|-----------------|---------------|
| Housing | | | |
| Rent home | 54% | 33% | 53% |
| Own home | 46% | 67% | 47% |
| Detached unit | 42% | 49% | 42% |
| Attached unit | 58% | 51% | 58% |
| Race and Ethnicity | | | |
| White | 87% | 93% | 88% |
| Not white | 13% | 7% | 12% |
| Not Hispanic | 91% | 97% | 93% |
| Hispanic | 9% | 3% | 7% |
| Sex and Age | | | |
| Female | 55% | 55% | 55% |
| Male | 45% | 45% | 45% |
| 18-34 years of age | 34% | 12% | 33% |
| 35-54 years of age | 36% | 25% | 36% |
| 55+ years of age | 30% | 63% | 31% |
| Females 18-34 | 18% | 6% | 18% |
| Females 35-54 | 20% | 14% | 20% |
| Females 55+ | 17% | 34% | 18% |
| Males 18-34 | 16% | 6% | 16% |
| Males 35-54 | 16% | 10% | 16% |
| Males 55+ | 13% | 29% | 13% |

Survey Data Analysis and Reporting

The survey dataset was analyzed using the Statistical Package for the Social Sciences (SPSS). For the most part, the percentages presented in the reports represent the “percent positive.” The percent positive is the combination of the top two most positive response options (i.e., “excellent” and “good,” “very safe” and “somewhat safe,” “essential” and “very important,” etc.), or, in the case of resident behaviors/participation, the percent positive represents the proportion of respondents indicating “yes” or participating in an activity at least once a month.

On many of the questions in the survey respondents may answer “don’t know.” The proportion of respondents giving this reply is shown in the full set of responses included in Appendix A. However, these responses have been removed from the analyses presented in the reports. In other words, the tables and graphs display the responses from respondents who had an opinion about a specific item.

Appendix D: Survey Materials

Dear Wilsonville Resident,

It won't take much of your time to make a big difference!

Your household has been randomly selected to participate in a survey about your community. Your survey will arrive in a few days.

Thank you for helping create a better city!

Sincerely,



Tim Knapp
Mayor

Dear Wilsonville Resident,

It won't take much of your time to make a big difference!

Your household has been randomly selected to participate in a survey about your community. Your survey will arrive in a few days.

Thank you for helping create a better city!

Sincerely,



Tim Knapp
Mayor

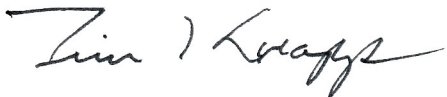
Dear Wilsonville Resident,

It won't take much of your time to make a big difference!

Your household has been randomly selected to participate in a survey about your community. Your survey will arrive in a few days.

Thank you for helping create a better city!

Sincerely,



Tim Knapp
Mayor

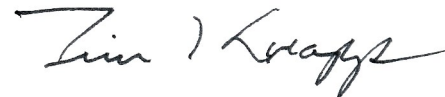
Dear Wilsonville Resident,

It won't take much of your time to make a big difference!

Your household has been randomly selected to participate in a survey about your community. Your survey will arrive in a few days.

Thank you for helping create a better city!

Sincerely,



Tim Knapp
Mayor



Presorted
First Class Mail
US Postage
PAID
Boulder, CO
Permit NO. 94



Presorted
First Class Mail
US Postage
PAID
Boulder, CO
Permit NO. 94



Presorted
First Class Mail
US Postage
PAID
Boulder, CO
Permit NO. 94



Presorted
First Class Mail
US Postage
PAID
Boulder, CO
Permit NO. 94



29799 SW Town Center Loop E
Wilsonville, Oregon 97070
(503) 682-1011
(503) 682-1015 Fax Administration
(503) 682-7025 Fax Community Development

May 2014

Dear City of Wilsonville Resident:

Please help us shape the future of Wilsonville! You have been selected at random to participate in the 2014 Wilsonville Citizen Survey.

Please take a few minutes to fill out the enclosed survey. Your participation in this survey is very important – especially since your household is one of only a small number of households being surveyed. Your feedback will help Wilsonville make decisions that affect our city.

A few things to remember:

- **Your responses are completely anonymous.**
- In order to hear from a diverse group of residents, the adult 18 years or older in your household who most recently had a birthday should complete this survey.
- **You may return the survey by mail in the enclosed postage-paid envelope, or you can complete the survey online at:**
www.n-r-c.com/survey/wilsonville.htm

If you have any questions about the survey please call 503-570-1503.

Thank you for your time and participation!

Sincerely,

Tim Knapp
Mayor





29799 SW Town Center Loop E
Wilsonville, Oregon 97070
(503) 682-1011
(503) 682-1015 Fax Administration
(503) 682-7025 Fax Community Development

June 2014

Dear City of Wilsonville Resident:

Here's a second chance if you haven't already responded to the 2014 Wilsonville Citizen Survey! **(If you completed it and sent it back, we thank you for your time and ask you to recycle this survey. Please do not respond twice.)**

Please help us shape the future of Wilsonville! You have been selected at random to participate in the 2014 Wilsonville Citizen Survey.

Please take a few minutes to fill out the enclosed survey. Your participation in this survey is very important – especially since your household is one of only a small number of households being surveyed. Your feedback will help Wilsonville make decisions that affect our city.

A few things to remember:

- **Your responses are completely anonymous.**
- In order to hear from a diverse group of residents, the adult 18 years or older in your household who most recently had a birthday should complete this survey.
- **You may return the survey by mail in the enclosed postage-paid envelope, or you can complete the survey online at:**

www.n-r-c.com/survey/wilsonville.htm

If you have any questions about the survey please call 503-570-1503.

Thank you for your time and participation!

Sincerely,

Tim Knapp
Mayor



The City of Wilsonville 2014 Citizen Survey

Please complete this questionnaire if you are the adult (age 18 or older) in the household who most recently had a birthday. The adult's year of birth does not matter. Please select the response (by circling the number or checking the box) that most closely represents your opinion for each question. Your responses are anonymous and will be reported in group form only.

1. Please rate each of the following aspects of quality of life in Wilsonville:

| | <i>Excellent</i> | <i>Good</i> | <i>Fair</i> | <i>Poor</i> | <i>Don't know</i> |
|--|------------------|-------------|-------------|-------------|-------------------|
| Wilsonville as a place to live..... | 1 | 2 | 3 | 4 | 5 |
| Your neighborhood as a place to live..... | 1 | 2 | 3 | 4 | 5 |
| Wilsonville as a place to raise children..... | 1 | 2 | 3 | 4 | 5 |
| Wilsonville as a place to work..... | 1 | 2 | 3 | 4 | 5 |
| Wilsonville as a place to visit..... | 1 | 2 | 3 | 4 | 5 |
| Wilsonville as a place to retire..... | 1 | 2 | 3 | 4 | 5 |
| The overall quality of life in Wilsonville | 1 | 2 | 3 | 4 | 5 |

2. Please rate each of the following characteristics as they relate to Wilsonville as a whole:

| | <i>Excellent</i> | <i>Good</i> | <i>Fair</i> | <i>Poor</i> | <i>Don't know</i> |
|--|------------------|-------------|-------------|-------------|-------------------|
| Overall feeling of safety in Wilsonville | 1 | 2 | 3 | 4 | 5 |
| Overall ease of getting to the places you usually have to visit..... | 1 | 2 | 3 | 4 | 5 |
| Quality of overall natural environment in Wilsonville..... | 1 | 2 | 3 | 4 | 5 |
| Overall "built environment" of Wilsonville (including overall design, buildings, parks and transportation systems) | 1 | 2 | 3 | 4 | 5 |
| Health and wellness opportunities in Wilsonville..... | 1 | 2 | 3 | 4 | 5 |
| Overall opportunities for education and enrichment..... | 1 | 2 | 3 | 4 | 5 |
| Overall economic health of Wilsonville | 1 | 2 | 3 | 4 | 5 |
| Sense of community..... | 1 | 2 | 3 | 4 | 5 |
| Overall image or reputation of Wilsonville | 1 | 2 | 3 | 4 | 5 |

3. Please indicate how likely or unlikely you are to do each of the following:

| | <i>Very likely</i> | <i>Somewhat likely</i> | <i>Somewhat unlikely</i> | <i>Very unlikely</i> | <i>Don't know</i> |
|--|--------------------|------------------------|--------------------------|----------------------|-------------------|
| Recommend living in Wilsonville to someone who asks..... | 1 | 2 | 3 | 4 | 5 |
| Remain in Wilsonville for the next five years | 1 | 2 | 3 | 4 | 5 |

4. Please rate how safe or unsafe you feel:

| | <i>Very safe</i> | <i>Somewhat safe</i> | <i>Neither safe nor unsafe</i> | <i>Somewhat unsafe</i> | <i>Very unsafe</i> | <i>Don't know</i> |
|--|------------------|----------------------|--------------------------------|------------------------|--------------------|-------------------|
| In your neighborhood during the day..... | 1 | 2 | 3 | 4 | 5 | 6 |
| In Wilsonville's commercial areas during the day | 1 | 2 | 3 | 4 | 5 | 6 |

5. Please rate each of the following characteristics as they relate to Wilsonville as a whole:

| | <i>Excellent</i> | <i>Good</i> | <i>Fair</i> | <i>Poor</i> | <i>Don't know</i> |
|--|------------------|-------------|-------------|-------------|-------------------|
| Traffic flow on major streets | 1 | 2 | 3 | 4 | 5 |
| Ease of travel by car in Wilsonville | 1 | 2 | 3 | 4 | 5 |
| Ease of travel by public transportation in Wilsonville..... | 1 | 2 | 3 | 4 | 5 |
| Ease of travel by bicycle in Wilsonville | 1 | 2 | 3 | 4 | 5 |
| Ease of walking in Wilsonville..... | 1 | 2 | 3 | 4 | 5 |
| Availability of paths and walking trails | 1 | 2 | 3 | 4 | 5 |
| Cleanliness of Wilsonville..... | 1 | 2 | 3 | 4 | 5 |
| Overall appearance of Wilsonville | 1 | 2 | 3 | 4 | 5 |
| Public places where people want to spend time | 1 | 2 | 3 | 4 | 5 |
| Variety of housing options | 1 | 2 | 3 | 4 | 5 |
| Availability of affordable quality housing | 1 | 2 | 3 | 4 | 5 |
| Fitness opportunities (including exercise classes and paths or trails, etc.) | 1 | 2 | 3 | 4 | 5 |
| Recreational opportunities..... | 1 | 2 | 3 | 4 | 5 |
| Availability of affordable quality food..... | 1 | 2 | 3 | 4 | 5 |

6. Please rate each of the following characteristics as they relate to Wilsonville as a whole:

| | <i>Excellent</i> | <i>Good</i> | <i>Fair</i> | <i>Poor</i> | <i>Don't know</i> |
|--|------------------|-------------|-------------|-------------|-------------------|
| Availability of affordable quality child care/preschool | 1 | 2 | 3 | 4 | 5 |
| K-12 education | 1 | 2 | 3 | 4 | 5 |
| Adult educational opportunities..... | 1 | 2 | 3 | 4 | 5 |
| Opportunities to attend cultural/arts/music activities | 1 | 2 | 3 | 4 | 5 |
| Opportunities to participate in religious or spiritual events and activities | 1 | 2 | 3 | 4 | 5 |
| Employment opportunities | 1 | 2 | 3 | 4 | 5 |
| Shopping opportunities..... | 1 | 2 | 3 | 4 | 5 |
| Cost of living in Wilsonville | 1 | 2 | 3 | 4 | 5 |
| Overall quality of business and service establishments in Wilsonville..... | 1 | 2 | 3 | 4 | 5 |
| Vibrant commercial areas..... | 1 | 2 | 3 | 4 | 5 |
| Overall quality of new development in Wilsonville | 1 | 2 | 3 | 4 | 5 |
| Opportunities to participate in social events and activities | 1 | 2 | 3 | 4 | 5 |
| Opportunities to volunteer..... | 1 | 2 | 3 | 4 | 5 |
| Opportunities to participate in community matters | 1 | 2 | 3 | 4 | 5 |
| Openness and acceptance of the community toward people of diverse backgrounds | 1 | 2 | 3 | 4 | 5 |
| Neighborliness of residents in Wilsonville..... | 1 | 2 | 3 | 4 | 5 |

7. Please indicate whether or not you have done each of the following in the last 12 months.

| | <i>No</i> | <i>Yes</i> |
|--|-----------|------------|
| Made efforts to conserve water | 1 | 2 |
| Made efforts to make your home more energy efficient | 1 | 2 |
| Observed a code violation or other hazard in Wilsonville (weeds, abandoned buildings, etc.)..... | 1 | 2 |
| Household member was a victim of a crime in Wilsonville | 1 | 2 |
| Reported a crime to the police in Wilsonville..... | 1 | 2 |
| Stocked supplies in preparation for an emergency | 1 | 2 |
| Campaigned or advocated for an issue, cause or candidate | 1 | 2 |
| Contacted the City of Wilsonville (in-person, phone, email or web) for help or information..... | 1 | 2 |
| Contacted Wilsonville elected officials (in-person, phone, email or web) to express your opinion | 1 | 2 |

8. In the last 12 months, about how many times, if at all, have you or other household members done each of the following in Wilsonville?

| | <i>2 times a week or more</i> | <i>2-4 times a month</i> | <i>Once a month or less</i> | <i>Not at all</i> |
|---|-----------------------------------|------------------------------|---------------------------------|-----------------------|
| Used Wilsonville recreation centers or their services | 1 | 2 | 3 | 4 |
| Visited a neighborhood park or City park | 1 | 2 | 3 | 4 |
| Used Wilsonville public libraries or their services..... | 1 | 2 | 3 | 4 |
| Participated in religious or spiritual activities in Wilsonville..... | 1 | 2 | 3 | 4 |
| Attended a City-sponsored event..... | 1 | 2 | 3 | 4 |
| Used bus, rail, subway or other public transportation instead of driving..... | 1 | 2 | 3 | 4 |
| Carpooled with other adults or children instead of driving alone..... | 1 | 2 | 3 | 4 |
| Walked or biked instead of driving | 1 | 2 | 3 | 4 |
| Volunteered your time to some group/activity in Wilsonville..... | 1 | 2 | 3 | 4 |
| Participated in a club | 1 | 2 | 3 | 4 |
| Talked to or visited with your immediate neighbors | 1 | 2 | 3 | 4 |
| Done a favor for a neighbor..... | 1 | 2 | 3 | 4 |

9. Thinking about local public meetings (of local elected officials like City Council or County Commissioners, advisory boards, town halls, HOA, neighborhood watch, etc.), in the last 12 months, about how many times, if at all, have you or other household members attended or watched a local public meeting?

| | <i>2 times a week or more</i> | <i>2-4 times a month</i> | <i>Once a month or less</i> | <i>Not at all</i> |
|--|-----------------------------------|------------------------------|---------------------------------|-----------------------|
| <u>Attended</u> a local public meeting | 1 | 2 | 3 | 4 |
| <u>Watched</u> (online or on television) a local public meeting..... | 1 | 2 | 3 | 4 |

The City of Wilsonville 2014 Citizen Survey

10. Please rate the quality of each of the following services in Wilsonville:

| | <i>Excellent</i> | <i>Good</i> | <i>Fair</i> | <i>Poor</i> | <i>Don't know</i> |
|--|------------------|-------------|-------------|-------------|-------------------|
| Police/Sheriff services..... | 1 | 2 | 3 | 4 | 5 |
| Fire services..... | 1 | 2 | 3 | 4 | 5 |
| Ambulance or emergency medical services | 1 | 2 | 3 | 4 | 5 |
| Crime prevention..... | 1 | 2 | 3 | 4 | 5 |
| Fire prevention and education..... | 1 | 2 | 3 | 4 | 5 |
| Traffic enforcement | 1 | 2 | 3 | 4 | 5 |
| Street repair | 1 | 2 | 3 | 4 | 5 |
| Street cleaning | 1 | 2 | 3 | 4 | 5 |
| Street lighting..... | 1 | 2 | 3 | 4 | 5 |
| Sidewalk maintenance | 1 | 2 | 3 | 4 | 5 |
| Traffic signal timing..... | 1 | 2 | 3 | 4 | 5 |
| Bus or transit services..... | 1 | 2 | 3 | 4 | 5 |
| Garbage collection..... | 1 | 2 | 3 | 4 | 5 |
| Recycling | 1 | 2 | 3 | 4 | 5 |
| Yard waste pick-up | 1 | 2 | 3 | 4 | 5 |
| Storm drainage | 1 | 2 | 3 | 4 | 5 |
| Drinking water..... | 1 | 2 | 3 | 4 | 5 |
| Sewer services | 1 | 2 | 3 | 4 | 5 |
| Power (electric and/or gas) utility..... | 1 | 2 | 3 | 4 | 5 |
| City of Wilsonville utility billing..... | 1 | 2 | 3 | 4 | 5 |
| City parks..... | 1 | 2 | 3 | 4 | 5 |
| Recreation programs or classes..... | 1 | 2 | 3 | 4 | 5 |
| Recreation centers or facilities | 1 | 2 | 3 | 4 | 5 |
| Land use, planning and zoning..... | 1 | 2 | 3 | 4 | 5 |
| Code enforcement (weeds, abandoned buildings, etc.) | 1 | 2 | 3 | 4 | 5 |
| Animal control | 1 | 2 | 3 | 4 | 5 |
| Economic development | 1 | 2 | 3 | 4 | 5 |
| Public library services | 1 | 2 | 3 | 4 | 5 |
| Public information services | 1 | 2 | 3 | 4 | 5 |
| Cable television..... | 1 | 2 | 3 | 4 | 5 |
| Emergency preparedness (services that prepare the community for natural disasters or other emergency situations)..... | 1 | 2 | 3 | 4 | 5 |
| Preservation of natural areas such as open space, farmlands and greenbelts..... | 1 | 2 | 3 | 4 | 5 |
| Wilsonville open space | 1 | 2 | 3 | 4 | 5 |
| City-sponsored special events | 1 | 2 | 3 | 4 | 5 |
| Overall customer service by Wilsonville employees (police, receptionists, planners, etc.)..... | 1 | 2 | 3 | 4 | 5 |

11. Overall, how would you rate the quality of the services provided by each of the following?

| | <i>Excellent</i> | <i>Good</i> | <i>Fair</i> | <i>Poor</i> | <i>Don't know</i> |
|-------------------------------|------------------|-------------|-------------|-------------|-------------------|
| The City of Wilsonville | 1 | 2 | 3 | 4 | 5 |
| The Federal Government | 1 | 2 | 3 | 4 | 5 |

12. Please rate the following categories of Wilsonville government performance:

| | <i>Excellent</i> | <i>Good</i> | <i>Fair</i> | <i>Poor</i> | <i>Don't know</i> |
|--|------------------|-------------|-------------|-------------|-------------------|
| The value of services for the taxes paid to Wilsonville..... | 1 | 2 | 3 | 4 | 5 |
| The overall direction that Wilsonville is taking..... | 1 | 2 | 3 | 4 | 5 |
| The job Wilsonville government does at welcoming citizen involvement | 1 | 2 | 3 | 4 | 5 |
| Overall confidence in Wilsonville government | 1 | 2 | 3 | 4 | 5 |
| Generally acting in the best interest of the community | 1 | 2 | 3 | 4 | 5 |
| Being honest..... | 1 | 2 | 3 | 4 | 5 |
| Treating all residents fairly | 1 | 2 | 3 | 4 | 5 |

13. Please rate how important, if at all, you think it is for the Wilsonville community to focus on each of the following in the coming two years:

| | <i>Essential</i> | <i>Very important</i> | <i>Somewhat important</i> | <i>Not at all important</i> |
|--|------------------|-----------------------|---------------------------|-----------------------------|
| Overall feeling of safety in Wilsonville | 1 | 2 | 3 | 4 |
| Overall ease of getting to the places you usually have to visit | 1 | 2 | 3 | 4 |
| Quality of overall natural environment in Wilsonville..... | 1 | 2 | 3 | 4 |
| Overall “built environment” of Wilsonville (including overall design, buildings, parks and transportation systems) | 1 | 2 | 3 | 4 |
| Health and wellness opportunities in Wilsonville..... | 1 | 2 | 3 | 4 |
| Overall opportunities for education and enrichment..... | 1 | 2 | 3 | 4 |
| Overall economic health of Wilsonville | 1 | 2 | 3 | 4 |
| Sense of community..... | 1 | 2 | 3 | 4 |

14. Please indicate whether each of the following is a major source, minor source, or not a source of information regarding Wilsonville City Government.

| | <i>Major source</i> | <i>Minor source</i> | <i>Not a source</i> |
|---|---------------------|---------------------|---------------------|
| Boones Ferry Messenger (City newsletter) | 1 | 2 | 3 |
| <i>Wilsonville Spokesman</i> | 1 | 2 | 3 |
| <i>Oregonian</i> | 1 | 2 | 3 |
| Local public access television | 1 | 2 | 3 |
| City of Wilsonville website (www.ci.wilsonville.or.us)..... | 1 | 2 | 3 |
| City’s Facebook page | 1 | 2 | 3 |
| City’s Twitter account | 1 | 2 | 3 |
| Oregon Live website’s Wilsonville blog page | 1 | 2 | 3 |

15. What do you think is the biggest priority facing the City of Wilsonville over the next five years?

The City of Wilsonville 2014 Citizen Survey

Our last questions are about you and your household. Again, all of your responses to this survey are completely anonymous and will be reported in group form only.

D1. How often, if at all, do you do each of the following, considering all of the times you could?

| | <i>Never</i> | <i>Rarely</i> | <i>Sometimes</i> | <i>Usually</i> | <i>Always</i> |
|--|--------------|---------------|------------------|----------------|---------------|
| Recycle at home | 1 | 2 | 3 | 4 | 5 |
| Purchase goods or services from a business located in Wilsonville..... | 1 | 2 | 3 | 4 | 5 |
| Eat at least 5 portions of fruits and vegetables a day | 1 | 2 | 3 | 4 | 5 |
| Participate in moderate or vigorous physical activity | 1 | 2 | 3 | 4 | 5 |
| Read or watch local news (via television, paper, computer, etc.) | 1 | 2 | 3 | 4 | 5 |
| Vote in local elections..... | 1 | 2 | 3 | 4 | 5 |

D2. Would you say that in general your health is:

- Excellent
 Very good
 Good
 Fair
 Poor

D3. What impact, if any, do you think the economy will have on your family income in the next 6 months? Do you think the impact will be:

- Very positive
 Somewhat positive
 Neutral
 Somewhat negative
 Very negative

D4. What is your employment status?

- Working full time for pay
 Working part time for pay
 Unemployed, looking for paid work
 Unemployed, not looking for paid work
 Fully retired

D5. Do you work inside the boundaries of Wilsonville?

- Yes, outside the home
 Yes, from home
 No

D6. How many years have you lived in Wilsonville?

- Less than 2 years
 11-20 years
 2-5 years
 More than 20 years
 6-10 years

D7. Which best describes the building you live in?

- One family house detached from any other houses
 Building with two or more homes (duplex, townhome, apartment or condominium)
 Mobile home
 Other

D8. Is this house, apartment or mobile home...

- Rented
 Owned

D9. About how much is your monthly housing cost for the place you live (including rent, mortgage payment, property tax, property insurance and homeowners' association (HOA) fees)?

- Less than \$300 per month
 \$300 to \$599 per month
 \$600 to \$999 per month
 \$1,000 to \$1,499 per month
 \$1,500 to \$2,499 per month
 \$2,500 or more per month

D10. Do any children 17 or under live in your household?

- No
 Yes

D11. Are you or any other members of your household aged 65 or older?

- No
 Yes

D12. How much do you anticipate your household's total income before taxes will be for the current year? (Please include in your total income money from all sources for all persons living in your household.)

- Less than \$25,000
 \$25,000 to \$49,999
 \$50,000 to \$99,999
 \$100,000 to \$149,999
 \$150,000 or more

Please respond to both questions D13 and D14:

D13. Are you Spanish, Hispanic or Latino?

- No, not Spanish, Hispanic or Latino
 Yes, I consider myself to be Spanish, Hispanic or Latino

D14. What is your race? (Mark one or more races to indicate what race you consider yourself to be.)

- American Indian or Alaskan Native
 Asian, Asian Indian or Pacific Islander
 Black or African American
 White
 Other

D15. In which category is your age?

- 18-24 years
 55-64 years
 25-34 years
 65-74 years
 35-44 years
 75 years or older
 45-54 years

D16. What is your sex?

- Female
 Male

D17. Do you consider a cell phone or land line your primary telephone number?

- Cell
 Land line
 Both

Thank you for completing this survey. Please return the completed survey in the postage-paid envelope to: National Research Center, Inc., PO Box 549, Belle Mead, NJ 08502



Presorted
First Class Mail
US Postage
PAID
Boulder, CO
Permit NO.94

