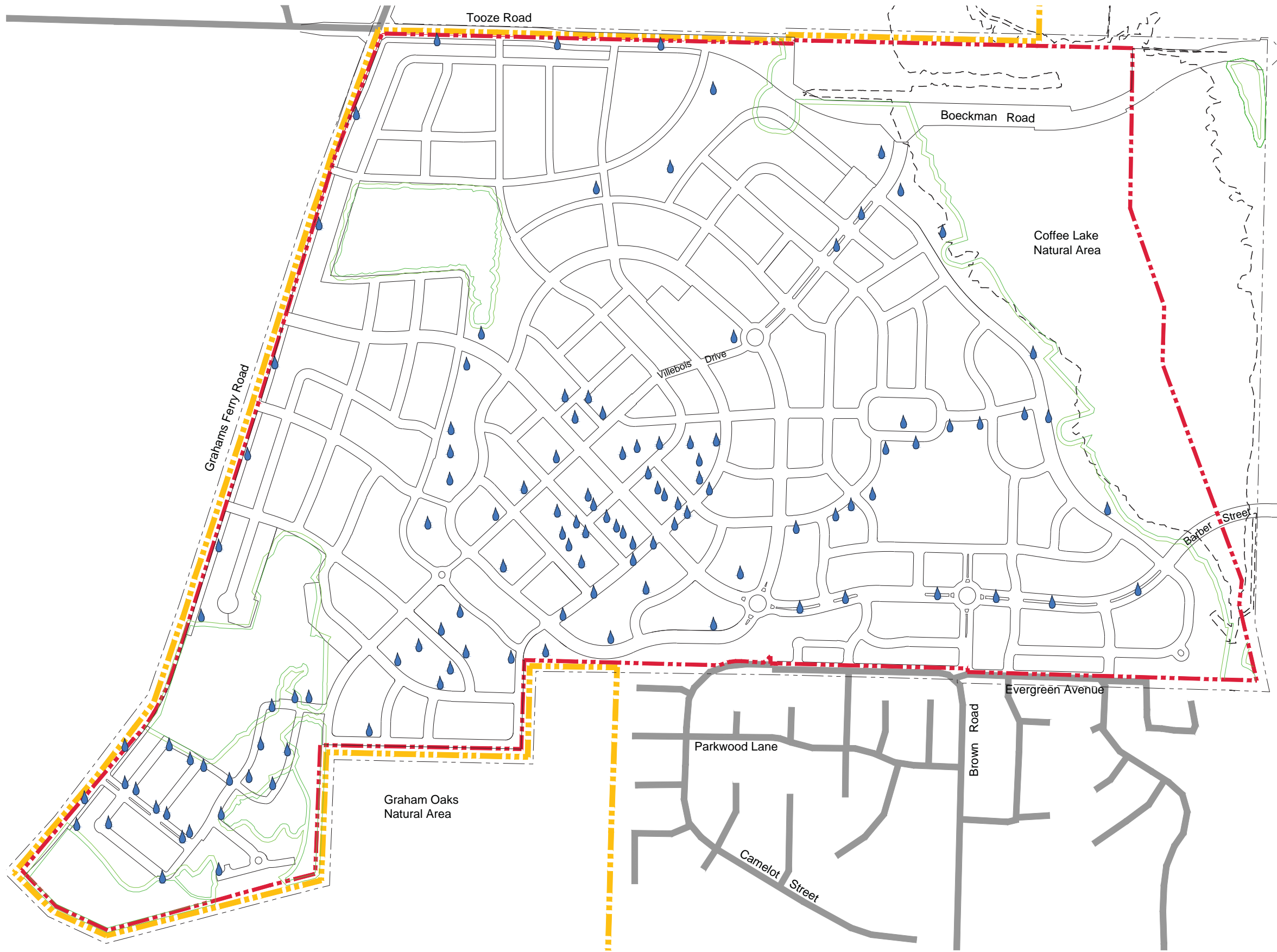





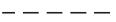
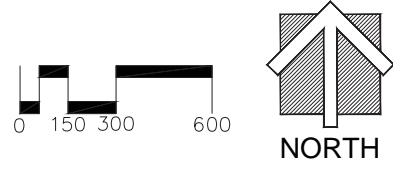


Figure 6B



-  Opportunities for Rainwater Management Components
-  Urban Growth Boundary
-  Village Area Boundary
-  Dammasch Study Boundary
-  SROZ and Buffer Boundary
-  Tentative 100 Year Flood Line (pending approval of MT2 application to update mapping for the upper portion of Coffee Lake Creek, Seely Ditch, and Basalt Creek prepared by HDR on October 25, 2005)



**NOTES:**  
 The Villbois Village Master Plan shall comply with the City Of Wilsonville SROZ regulations. encroachments within the SROZ and flood plain are shown for illustrative purposes only, and will be reviewed for compliance or exemptions as more detailed information is provided that will affect the SROZ areas. Adjustments in plan, street alignments, and intersections as well as rainwater facilities and pathways will be made to comply with SROZ regulations.

**Onsite Rainwater Management**  
 JULY 26, 2013