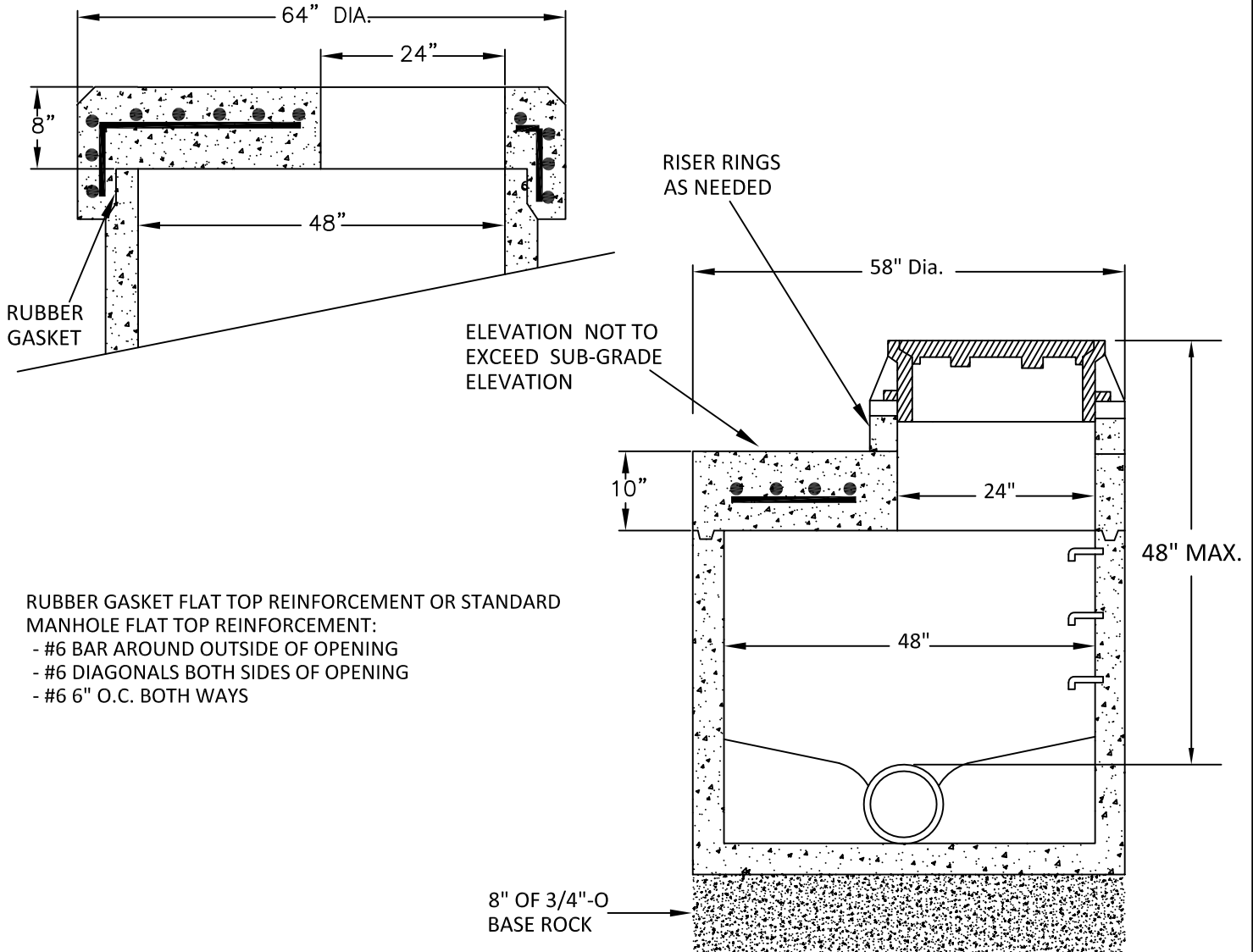


## RUBBER GASKET FLAT TOP (OPTIONAL)



RUBBER GASKET FLAT TOP REINFORCEMENT OR STANDARD MANHOLE FLAT TOP REINFORCEMENT:

- #6 BAR AROUND OUTSIDE OF OPENING
- #6 DIAGONALS BOTH SIDES OF OPENING
- #6 6" O.C. BOTH WAYS

### NOTES:

1. SEWER MANHOLE TO BE PREFORMED RUBBER O-RING GASKET DESIGN ONLY. ALL MANHOLES SHALL CONFORM WITH ASTM C-478.
2. ALL REINFORCEMENT SHALL BE GRADE 60.
3. INSTALL FLAT TOP MANHOLES FOR SHALLOW MANHOLES ONLY WHERE A SHORT ECCENTRIC CONE AS SHOWN IN DETAIL NO. S-2025 IS NOT FEASIBLE AS DETERMINED BY THE CITY'S AUTHORIZED REPRESENTATIVE.
4. INSTALL MANHOLE IN ACCORDANCE WITH DETAIL NO. S-2005 EXCEPT AS MODIFIED HEREIN.
5. GRADE RINGS AND FLAT TOP SECTION SHALL BE DESIGNED TO WITHSTAND AASHTO H-20 LOADINGS.

Flat Top Manhole

CITY OF  
WILSONVILLE



DRAWING NUMBER: S-2030

DRAWN BY: SR

SCALE: N.T.S.

FILE NAME: S-2030.DWG

APPROVED BY: NK

DATE: 6/4/14

PUBLIC WORKS STANDARDS