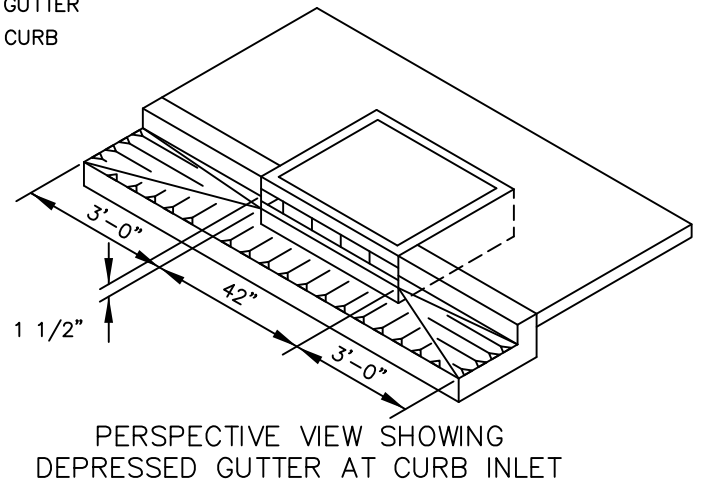
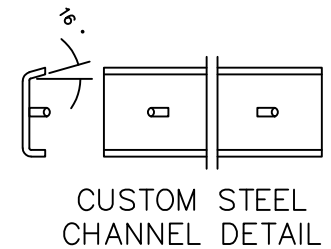
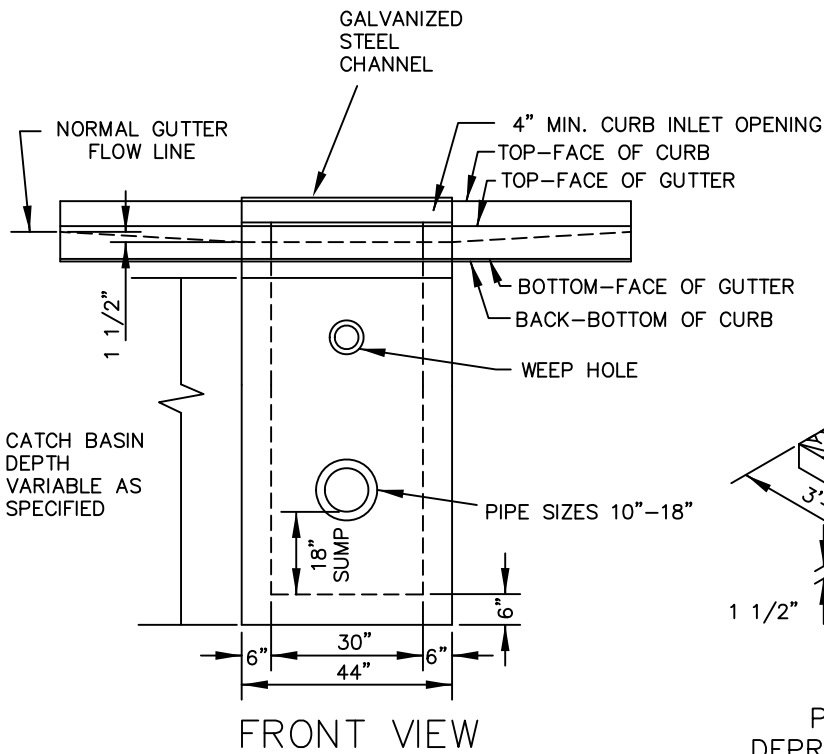
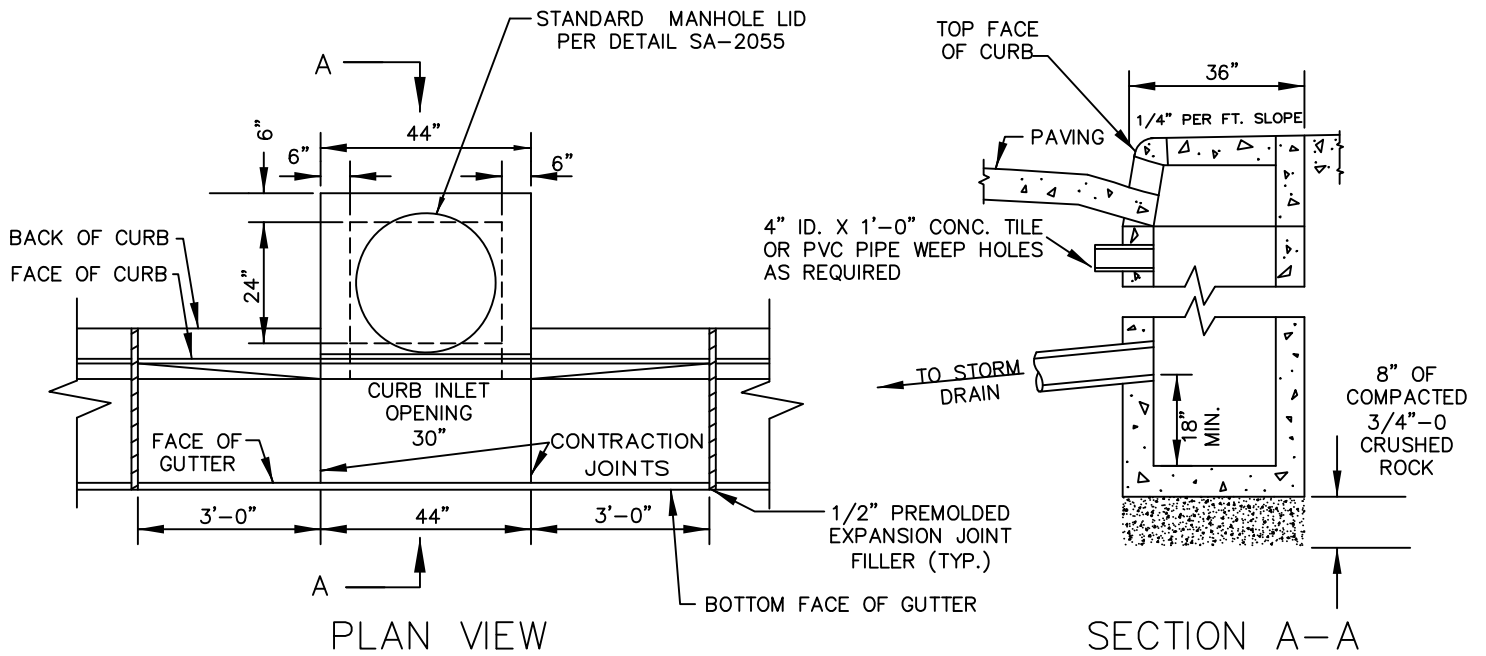


This Detail Drawing may not be altered or changed in any manner except by the City Engineer. It is the responsibility of the user to acquire the most current version.



NOTES:

1. CURB INLET (CG-30) SHALL NOT BE USED FOR FLOW THROUGH CATCH BASIN APPLICATIONS. FOR FLOW THROUGH APPLICATION, SEE DETAIL S-2090.
2. ALL FABRICATED METAL PARTS SHALL BE HOT-DIPPED GALVANIZED AFTER FABRICATION.
3. CONCRETE SHALL ATTAIN A MIN. COMPRESSIVE STRENGTH OF 3000 PSI. IN 28 DAYS.
4. PRECAST CURB INLET SHALL BE OLD CASTLE 30" CURB INLET TOP #CI-30-23FC OR APPROVED EQUAL.

Curb Inlet (CG-30)

DRAWING NUMBER: S-2085

DRAWN BY: SR

SCALE: N.T.S.

FILE NAME: S-2085.DWG

APPROVED BY: NK

DATE: 12/31/14

CITY OF WILSONVILLE



PUBLIC WORKS STANDARDS