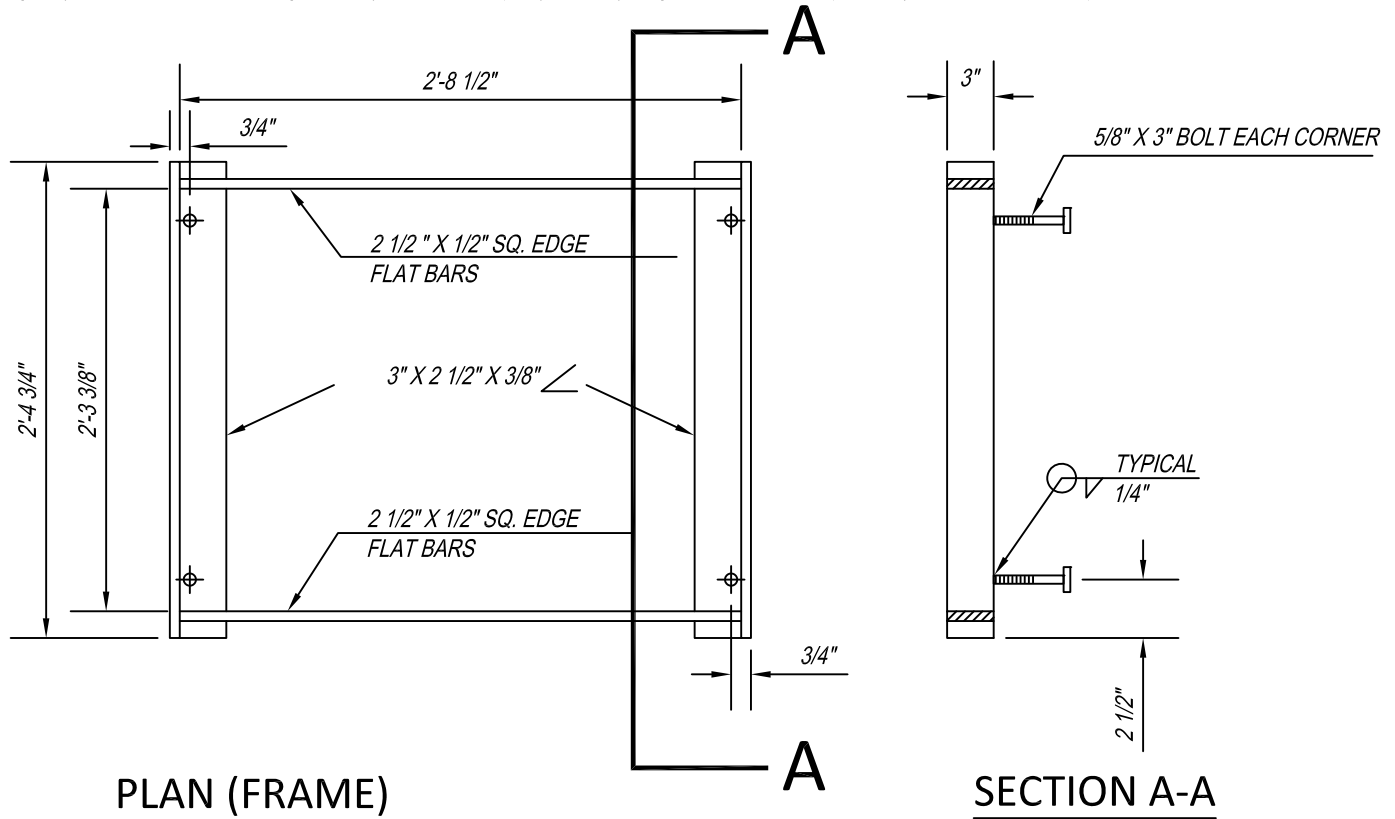
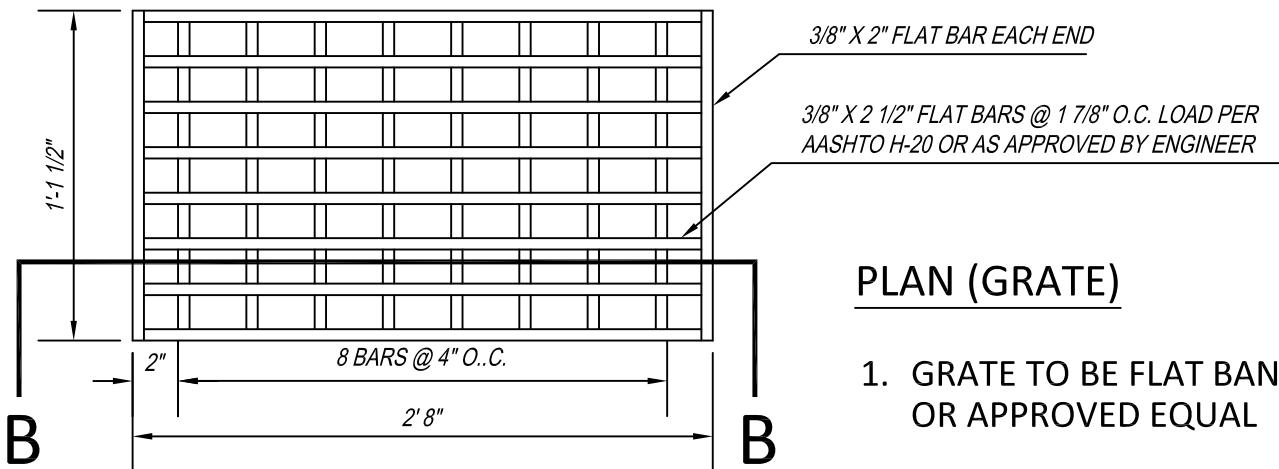
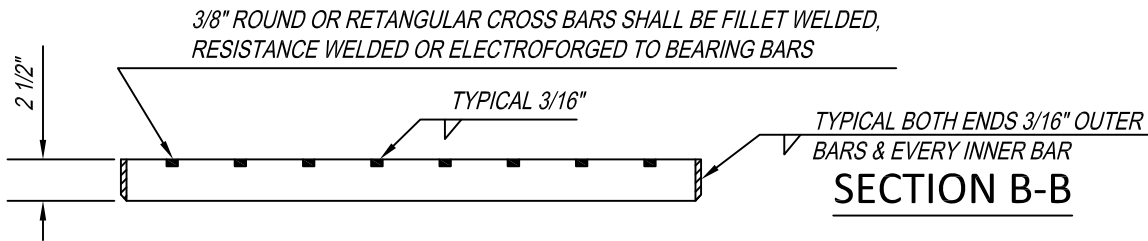


This Detail Drawing may not be altered or changed in any manner except by the City Engineer. It is the responsibility of the user to acquire the most current version.



NOTE:

USE VERTICAL BEADS IN CORNERS, FILLET WELD JOINT ON BOTTOM OF FRAME. GRATE MUST REST FLAT ON FRAME SURFACE.



1. GRATE TO BE FLAT BANK STEEL OR APPROVED EQUAL

Catch Basin (G-2) Frame and Grate

CITY OF
WILSONVILLE



DRAWING NUMBER: S-2100

DRAWN BY: SR

SCALE: N.T.S.

FILE NAME: S-2100.DWG

APPROVED BY: NK

DATE: 6/4/14

PUBLIC WORKS STANDARDS