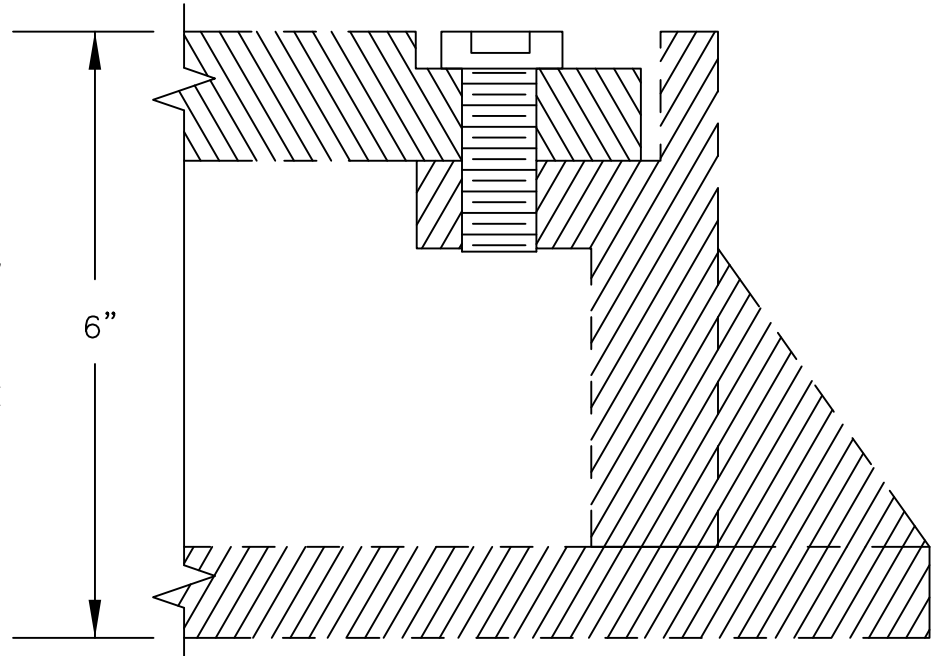



NOTES:

1. 1/4" A-304 STAINLESS STEEL ALLEN HEAD BOLTS 1" LONG RECESSED.
2. ALL PERMANENT CLEANOUTS TO HAVE BOLT DOWN COVER.
3. FRAME AND COVER SHALL BE GRAY CAST IRON (ASTM A 48 CLASS 30).
4. ANTI-SEEZE COMPOUND TO BE APPLIED TO ALL BOLTS.



DETAIL

Cleanout Frame & Cover			CITY OF WILSONVILLE PUBLIC WORKS STANDARDS	
DRAWING NUMBER: S-2185	DRAWN BY: SR	SCALE: N.T.S.		
FILE NAME: S-2185.DWG	APPROVED BY: NK	DATE: 6/4/14		