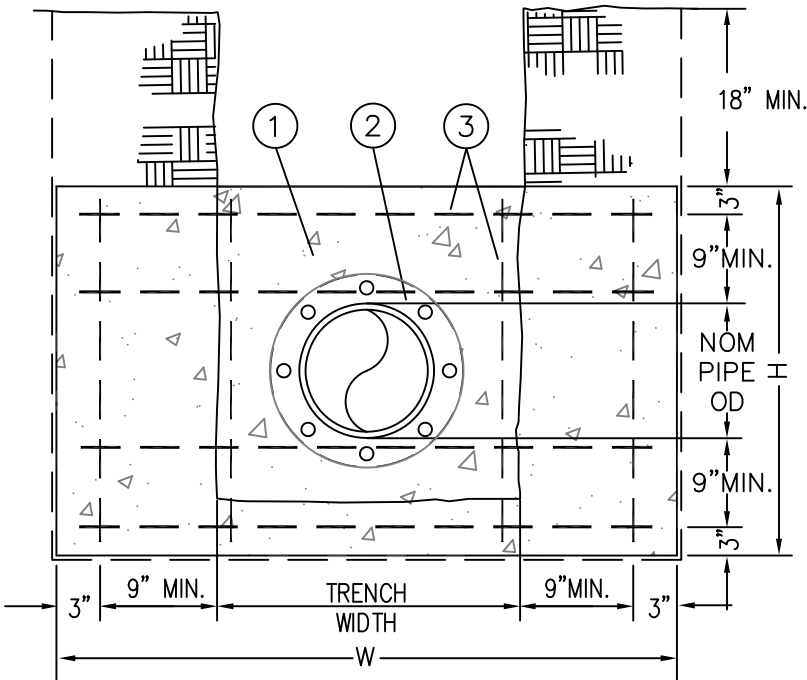


TOP VIEW



FRONT VIEW

MATERIALS:

- ① CONCRETE STRADDLE BLOCK.
- ② MEGA LUG OR APPROVED EQUAL
- ③ #4 REBAR EACH WAY, 12" O/C.

STRADDLE BLOCK	
PIPE SIZE (IN.)	BEARING AREA (S.F.)
4	2.1
6	4.9
8	8.7
10	13.6
12	19.6
18	44

NOTES:

1. STRADDLE BLOCKS FOR PIPE LARGER THAN 18" SHALL BE DESIGNED INDIVIDUALLY BY THE ENGINEER AND SHALL BE BASED ON THE FOLLOWING:
 - A.) 200 PSI. WATER PRESSURE
 - B.) SOIL BRG. CAPACITY, STEEL SIZE AND SPACING BY THE ENGINEER.
2. BEARING AREA OF BLOCK SHALL BE AGAINST UNDISTURBED SOIL.
3. STRADDLE BLOCK SHALL HAVE A MINIMUM OF 18" COVER.
4. CONCRETE SHALL BE COMMERCIAL MIX, MIN. COMPRESSIVE STRENGTH OF 3000 PSI AT 28 DAYS.
5. STRADDLE BLOCK HEIGHT(H) & WIDTH(W) SHALL BE DESIGNED AND STAMPED BY THE ENGINEER.

Standard Straddle Block

DRAWING NUMBER: WT-3010

DRAWN BY: SR

SCALE: N.T.S.

FILE NAME: WT-3010.DWG

APPROVED BY: NK

DATE: 6/4/14

CITY OF WILSONVILLE



PUBLIC WORKS STANDARDS