

Boberg Industrial Building Expansion

DRB Panel A Public Hearing

April 22, 2024

Presented by: Cindy Luxhoj AICP, Associate Planner

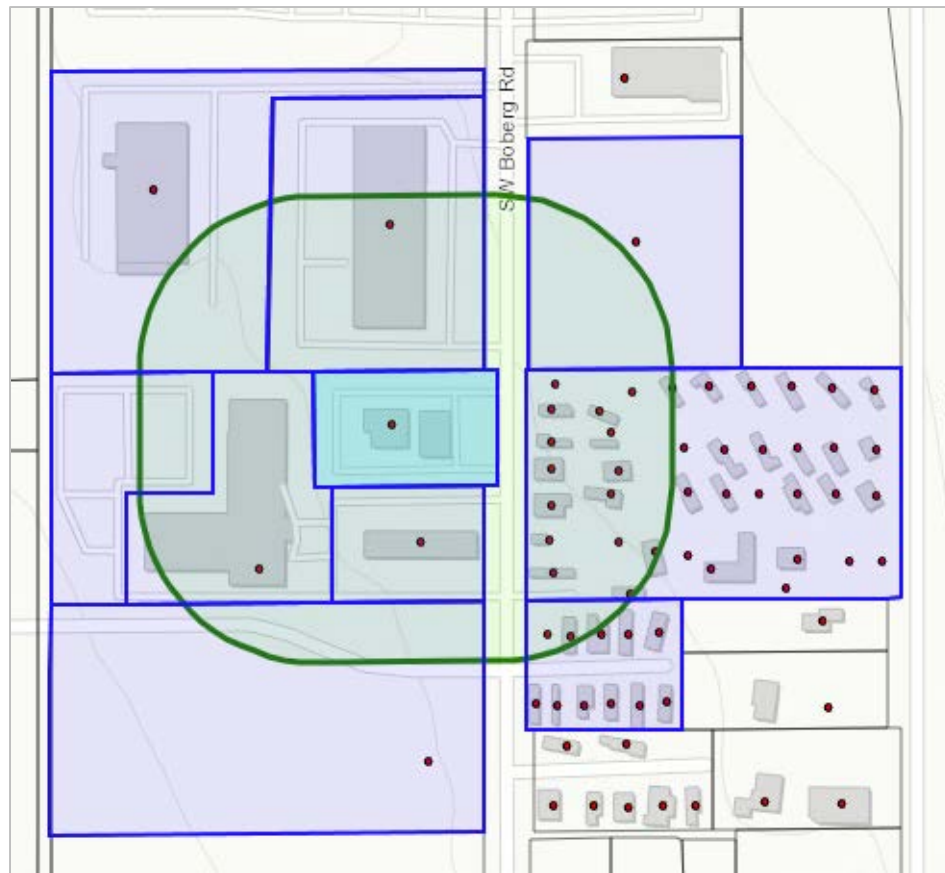


WILSONVILLE
OREGON

Location



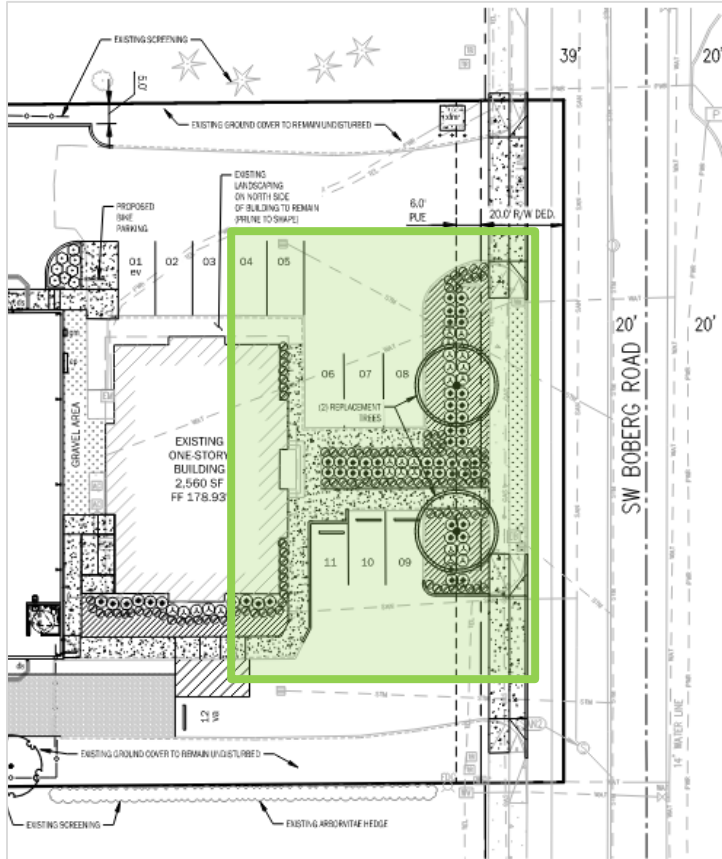
Noticing



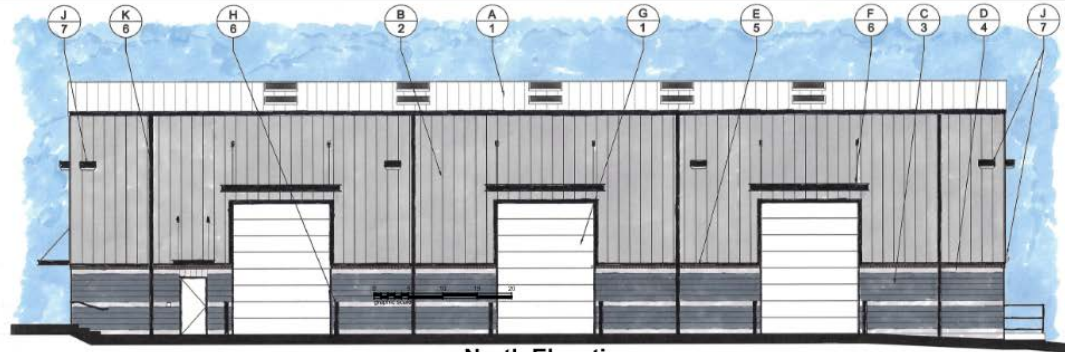
List of Applications

- Verifying Compliance with Clear & Objective Standards:
 - Stage 2 Final Plan Modification (STG223-0007)
 - Site Design Review (SDR23-0009)
 - Type C Tree Removal Plan (TPLN23-0004)
- Discretionary Review
 - No requests

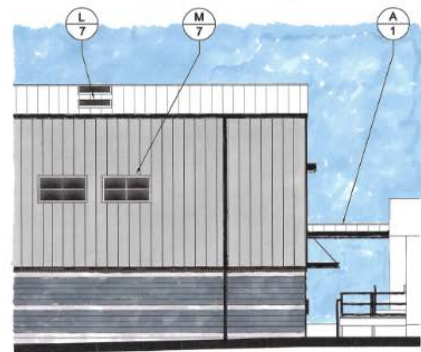
Buffering and Screening



Site Design Review



North Elevation



Partial South Elevation



Materials & Colors

A. Standing Seam Roof
Kynar Finish



B. Profiled Wall Panel
Kynar Finish



C & D. Smooth faced CMU
Split face accent



E. Brick Cap



F. Metal Awning
Powder Coated



G. Vehicle Door
Factory Finish



H. Steel Bollard
Painted



J. Exterior Light Fixture
Black Finish



K. Gutter & Downspout
Factory Finish



L. Aluminum Skylight
Factory Finish



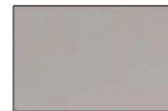
M. Aluminum Window
Black Finish



1. Kynar SRI-84
Glacier White



2. Kynar SRI-58
Ash Gray



3. Mutual Materials
Charcoal Smooth



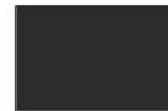
4. Mutual Materials
Willow Split Faced



5. Mutual Materials
Ebony Brick



3. SW 6258
Tricorn Black



ARCHITECTURAL
ALLIANCE
NORTHWEST, LLC

Studio
3725 SE Clay St
Portland, Oregon
97214
Business Office
1815 NE 57th Ave
Hillsboro, Oregon
97124

Contacts

Gary Olmon
Architect
503 546-5862
Gary.Olmon@PdxArch.com
Jonathan Gray
Senior Associate
503 729-4224
Jonathan.Gray@PdxArch.com

Project 0734
For Griffith Franklin

Project Title

Boberg Road Warehouse
A New Industrial Building
28395 SW Boberg Road
Wilsonville, Oregon 97070

Scale
1/8"=1'-0"
Reference: 0734-01-01

Date
January 22, 2024

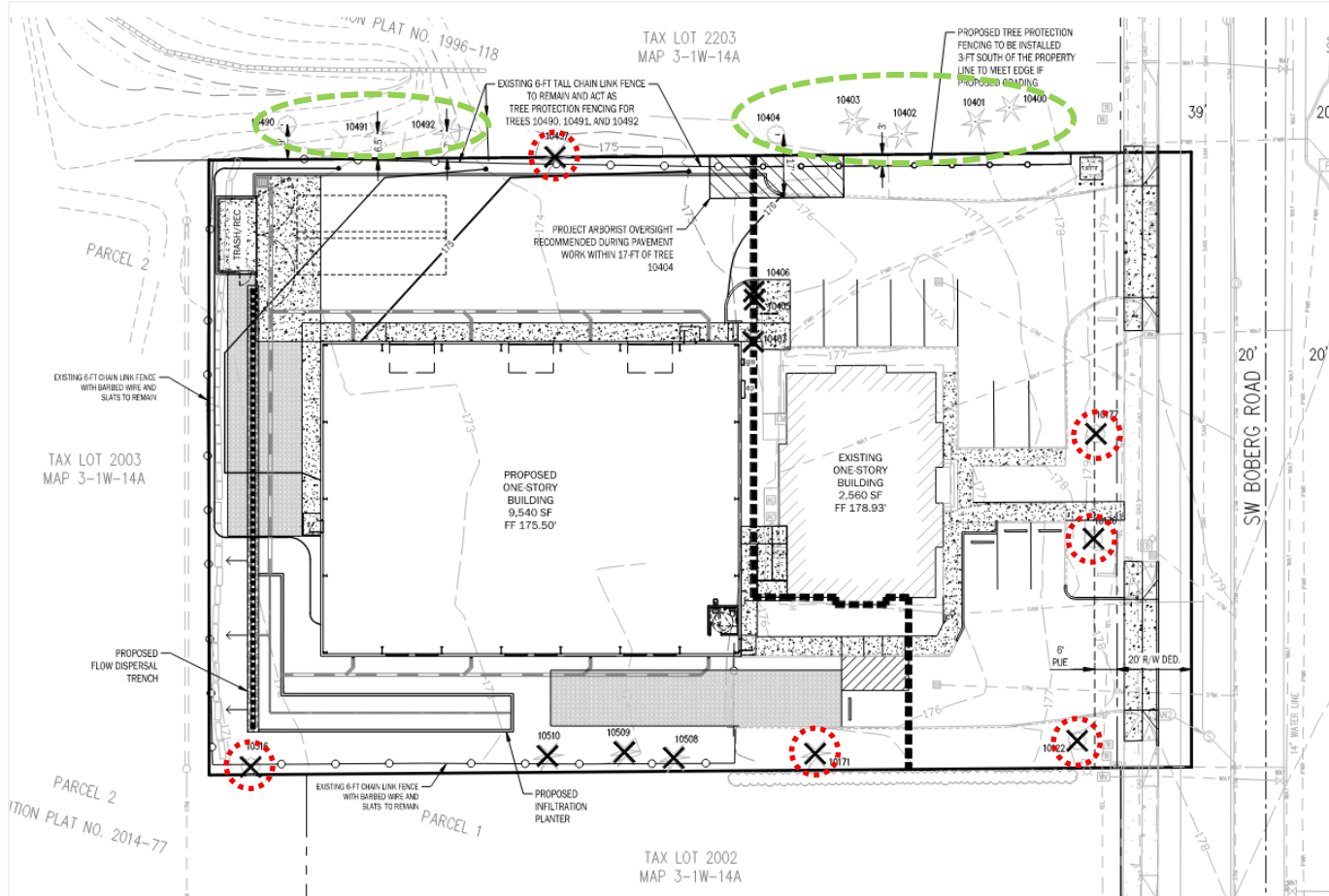
Sheet No.
A202

Sheet Title

COLOR
AND
MATERIALS
BOARD



Type C Tree Removal Plan



Discussion



WILSONVILLE
OREGON