

# Wilsonville Walks

### Walking Directions:

- Begin at Boones Ferry Park near Boones Ferry Landing on the Willamette River. There is parking here at the park, and the SMART bus route 4 can drop you off in Old Town - just continue a bit farther down the road to get to Boones Ferry Park.
- Follow SW Boones Ferry Road north, passing by the Tauchman House and Norris Young Machine Shop to 5th Street.
- Take a right turn on 5th Street and continue for two blocks, until you see St. Cyril's Catholic Church.
- Return on 5th Street back to SW Boones Ferry Road and turn right by Aden's Store. Continue just past Bailey Street and you will see the Methodist Church on your right.
- From here, turn and head back to Boones Ferry Park where you started. On your right, just past 3rd Street, you will see the site of Bill Flynn's Saloon.

### Note:

*This walk highlights some of the remaining structures in Old Town Wilsonville. Many structures are no longer standing, but these few remind us of what the community once was.*

### Walking Tips:

- Wear comfortable shoes and prepare for the weather.
- Walk with a friend.
- Use crosswalks when crossing the street.
- Wear reflective clothing if walking near dusk or dawn.
- Have fun!



The City of Wilsonville and SMART Options are proud to bring you Wilsonville Walks!

These walks highlight some of the best features that Wilsonville has to offer, from historic resources to wonderful parks and trails. Be safe and have fun while exploring your community!

For more information about the city of Wilsonville, please visit: [www.ci.wilsonville.or.us](http://www.ci.wilsonville.or.us)



South Metro Area Regional Transit (SMART) offers a variety of services to meet the transportation needs of Wilsonville's citizens, employees, and visitors.

These services include bus connections in the South Metro Area and Dial-A-Ride services, as well as Smart Options programs such as WalkSmart, BikeSmart, and RideShare.

Call SMART at 503-682-7790 or visit us on the web at [www.ridesmart.com](http://www.ridesmart.com) to find out more!

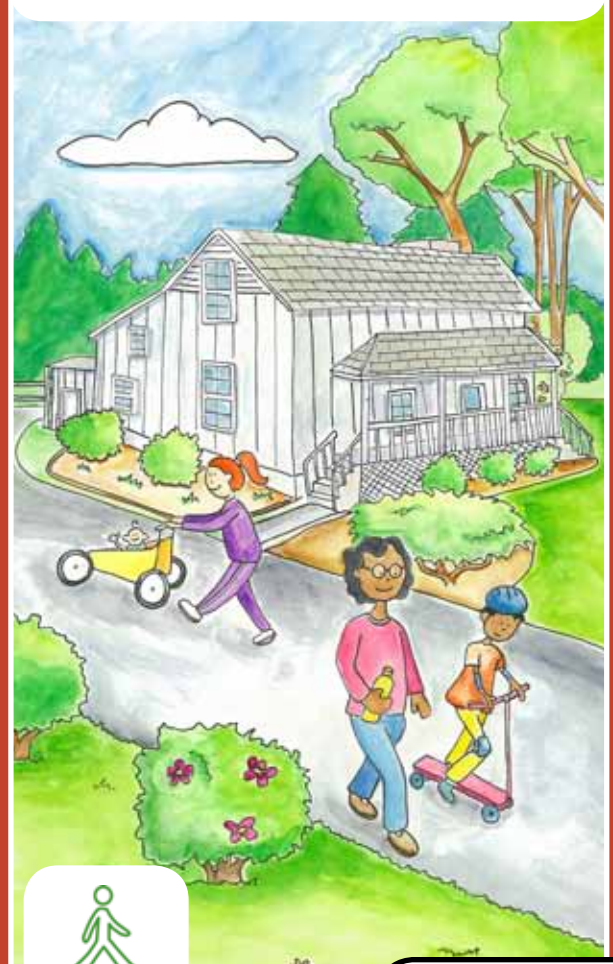


WalkSmart is a free program designed to increase walking among residents and employees in Wilsonville.

To find out more, email [walkandbike@ridesmart.com](mailto:walkandbike@ridesmart.com) or call 503-570-0332.

*Design, layout, and map by Jeff Owen  
Cover illustration by Sarah Hoopes*

## Old Town Historic Resources



**1.2** miles  
**30** minutes

## Old Town Historic Resources

### Walk Statistics:

Distance: 1.2 miles  
 Time: 30 minutes  
 Steps: 2,600  
 Calories  
 Burned: 110 to 210

Brought to you by:



and



**E**  
 The Aden's Store and Home. The store, which has been significantly altered into a residence, sold general merchandise and was operated by Henry Aden from 1897 until 1945.



**D**  
 St. Cyril's Catholic Church, built in 1926



**C**  
 Norris Young machine shop



**B**  
 The Tauchman House was the residence of ferry operator Emil Tauchman. The house later served as Wilsonville City Hall from 1971 to 1976. Available for rent through Community Center!



**A**  
 Ferry service was operational at Boones Ferry Landing from 1847 until 1954, when the freeway and bridge were completed, and experienced as many as 300 river crossings a day in its heyday.



**G**  
 The site of Bill Flynn's Saloon



**F**  
 Dedicated in 1911 and used until 1988, the Methodist Church property was originally purchased for \$1.

Water Treatment Plant Park

Boones Ferry Park

**Begin and End**

WILLAMETTE RIVER

WILSONVILLE ROAD

SW INDUSTRIAL WAY



SW BAILEY ST

5TH

4TH

SW OTTO LANE

3RD

WILLAMETTE RIVER

SW BOONES FERRY ROAD

SW MAGNOLIA AVE

SW FIRST

**Begin and End**

WILLAMETTE RIVER