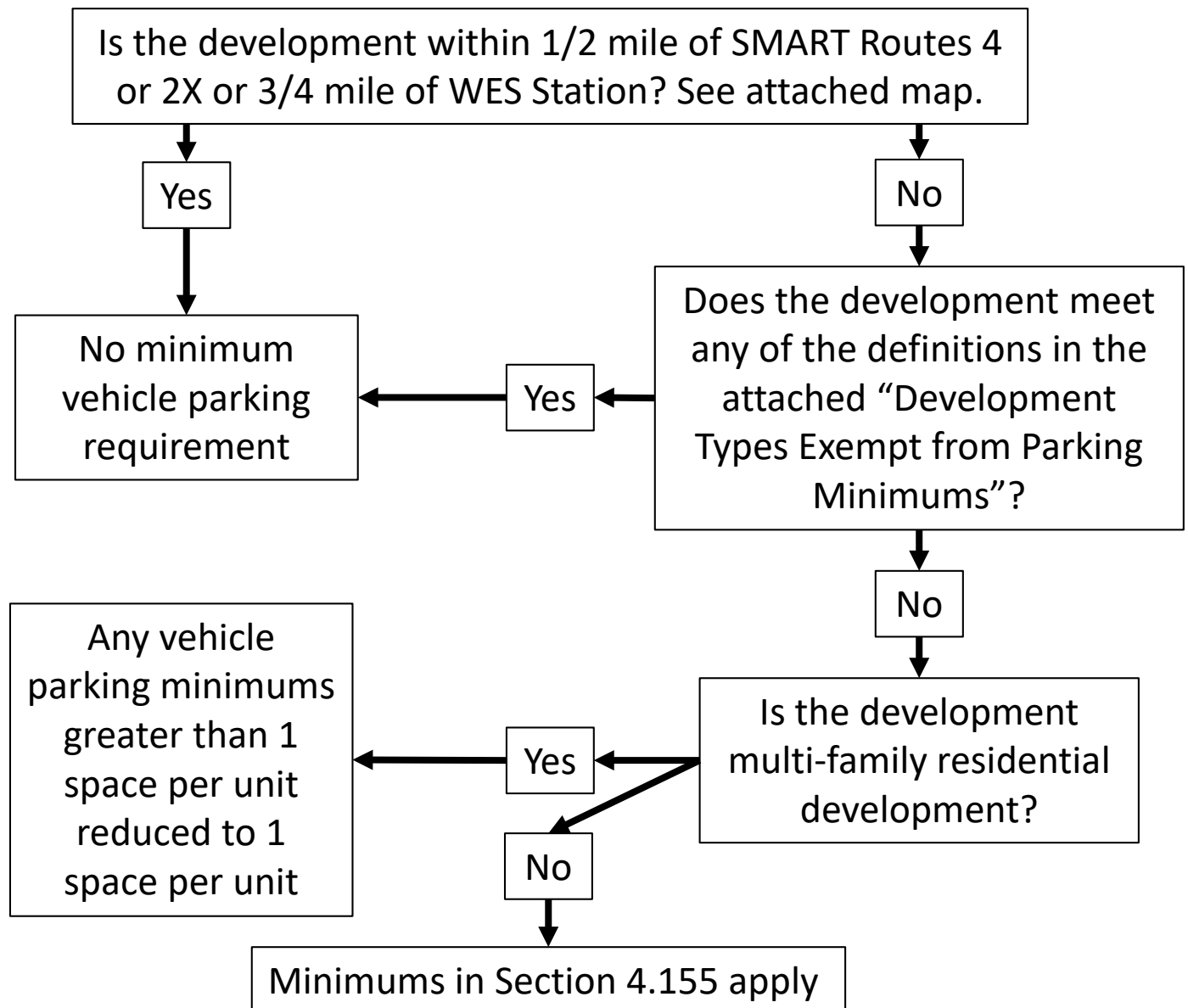




Guide to Oregon Administrative Rules Superseding Parking Requirements in Wilsonville's Development Code

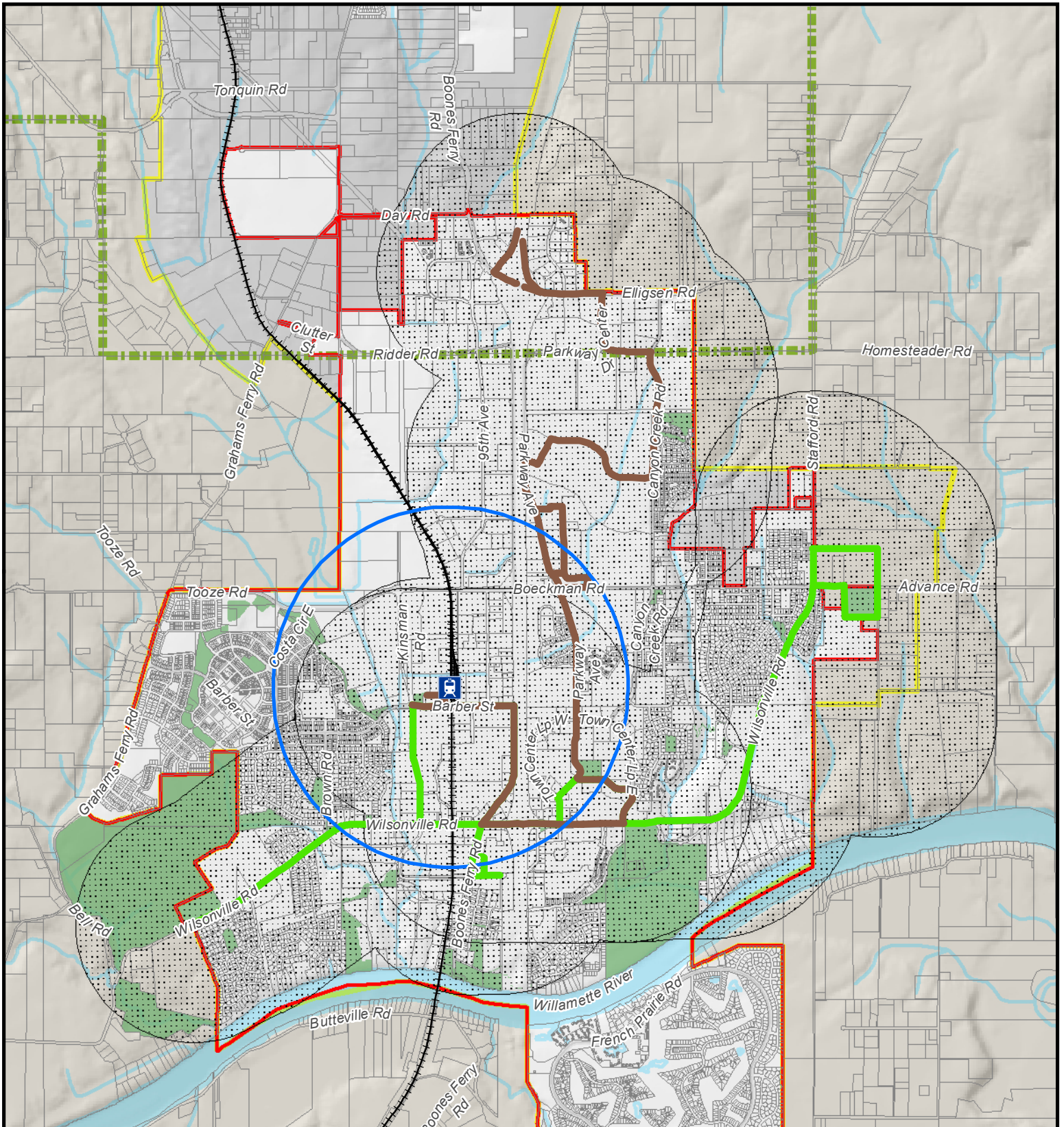
Pursuant to OAR 660-012-0430 and OAR 660-012-0440 certain State rules take precedence over any conflicting parking standards in Wilsonville's Development Code beginning January 1, 2023. In particular, a number of the vehicle parking minimums reflected in Table 5 of Section 4.155 are superseded. Use the following flow chart to determine what parking standards to apply.



Development Types Exempt from Parking Minimums Under OAR 660-012-0430

An Attachment to “Guide to Oregon Administrative Rules Superseding Parking Requirements in Wilsonville’s Development Code”

- Facilities and homes designed to serve people with psychosocial, physical, intellectual or developmental disabilities, including but not limited to a: residential care facility, residential training facility, residential treatment facility, residential training home, residential treatment home, and conversion facility as defined in ORS 443.400.
- Child care facility. Definition in ORS 329A.250: any facility that provides child care to children, including a day nursery, nursery school, child care center, certified or registered family child care home or similar unit operating under any name. Exemptions apply. See exemption list in ORS 329A.250 (5) (a)-(d).
- Single-room occupancy housing.
- Residential units smaller than 750 square feet. Note: Accessory Dwelling Units (ADUs) have no parking required in Wilsonville’s Development Code.
- Affordable housing. Summary of definition in OAR 660-039-0010 (see OAR for full definition): housing affordable to households making 80% or less of median income without assistance, except for spaces in manufactured dwelling parks where income is 100% or less of median income.
- Publicly supported housing. Summary of definition in as defined in ORS 456.250 (see ORS 456.250 (6) for full definition): multi-family housing receiving benefits from government assistance including HUD, Department of Agriculture. Does not include units for which developer received only fee waiver as part of development, or receives only Section 8 housing vouchers or similar.
- Emergency and transitional shelters for people experiencing homelessness.
- Domestic violence shelters.



The City of Wilsonville, Oregon
 Clackamas and Washington Counties

**Areas exempt from vehicle parking
 minimums pursuant to OAR
 660-012-0440**



- WES Stop + 3/4 Mile
- Wilsonville City Limits
- SMART 4 & 2X + 1/2 Mile
- ~ County Boundary
- ~ SMART Route 2X
- UGB
- ~ SMART Route 4



1/6/2023

Miles
 0 0.25